



Photoview Web 8

Target
Time-to-Market Reduction



Innovation

“ Innovation distinguishes between
a leader and a follower ”

(Steve Jobs)





The Modern World

LEDs have changed the world...

therefore the speed with which a company faces the market it's not what it used to be

The world today urges us to innovate and to see the future in a different light with different instruments



New Requirements

Manufacturers

- Update product data frequently
- Increase Information Power
- Reduce data preparation and Time-to-Market times





New Requirements



Lighting Designers

- Access product data quickly and easily
- Have complete and always up-to-date data
- Quickly transfer product data into their own applications



Nowadays

Companies today

- Locally create the interchange file, graphs and charts, ...
- and then upload them to the company Website



Disadvantages

- Takes long time
- Tens of thousands of files to manage
- Management of little information:
 - photometric files
 - polar diagram (rarely)



The Idea

- Create locally just the basic files (OXL or LDT or IES or IESxml ...)
- Upload them to the company Website Server
- Convert them on-the-fly directly from the Website and at the request of designers into technical data, graphics, tables, interchange files...

.....



The solution

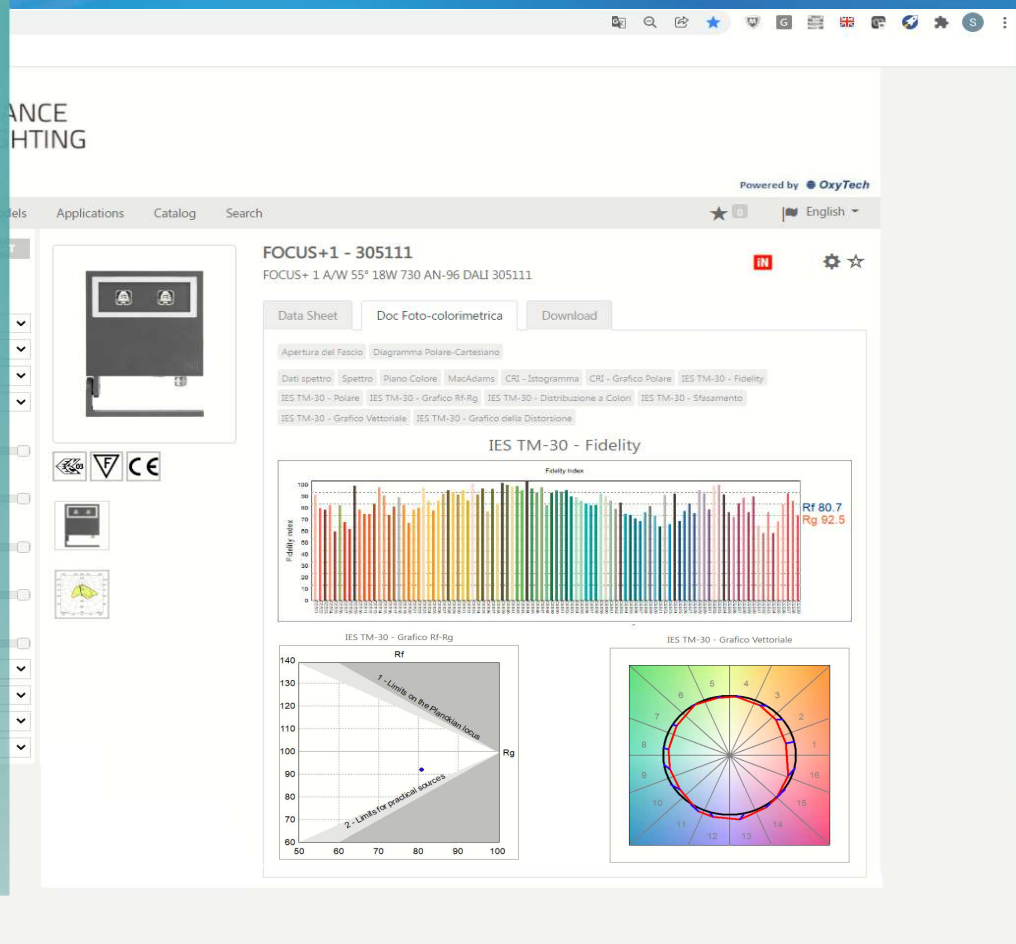




What is Photoview Web ?



Pv Web is a Web Server
for the automated management of
photometric and spectrometric data
of luminaires
starting from files
OXL, LDT, IES, IESxml ...





Photoview Web APIs



Pv Web

interfaces with the
Products section of the companies Websites
through API (Application Programming Interface) functions

Examples of Pw API calls

Caricamento Fotometria

<http://104.KKK.XXX.YY/WebCatalogAsp/FotomDataCtrl/LoadOXLFromFTP?src=/update7/db/OxyTech/LitePack/A1.OXL>

Generazione Parametri Fotometrici

<http://104.KKK.XXX.YY/WebCatalogAsp/MatrixCtrl/GetNumerics?src=/update7/db/OxyTech/LitePack/A1.OXL>

Generazione Parametri Spettro (CCT - CRI - ...)

<http://104.KKK.XXX.YY/WebCatalogAsp/SpectrumCtrl/GetNumerics?src=/update7/db/OxyTech/LitePack/A1.OXL>

Generazione Dati Fotometrici

<http://104.KKK.XXX.YY/WebCatalogAsp/FotomDataCtrl/SaveAsEulumDat?src=/update7/db/OxyTech/LitePack/A1.OXL>

Generazione Grafici

<http://104.KKK.XXX.YY/WebCatalogAsp/SpectrumCtrl/GetCIEGraf?src=/update7/db/OxyTech/LitePack/A1.OXL>



How does Pv Web work ?

NERI Prodotti Contemporary Prodotti Heritage Progetti

Prestazioni

- Riflettore con camera di miscelazione e schermo piano ai fosfori remoti.
- Flusso fino 5.000lm
- Classe di isolamento: classe II, classe I
- Grado di protezione: IP66

[Diagramma Polare](#)
[Curve Isolux](#)
[Grafici IES TM-30](#)

LDT
IES LM-63
IES TM-33

API

PW

IES TM-30 - Fidelity

IES TM-30 - Gradual Midway

IES TM-30 - Gradual Intermediate

- The user selects IES TM-30 Graphs
- The Website passes the OXL associated with the product to Pw and the request to create the IES TM-30 graphs
- Pw returns automatically (40 ms) the requested graphs that are displayed on the Website

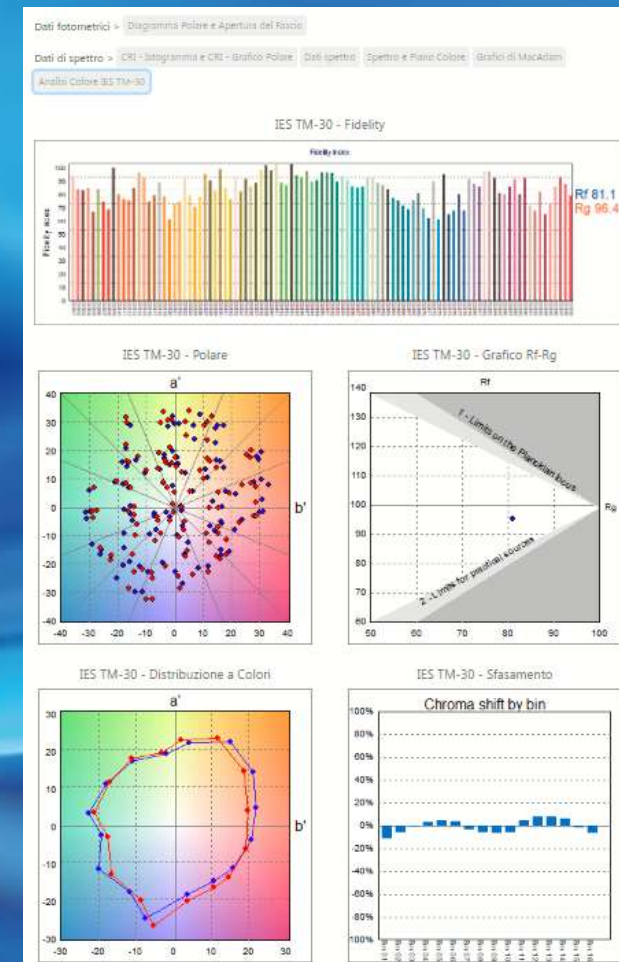


What can Pv Web process ?



Pv Web processes automatically

- Photometric and spectrometric data
- Polar and Cartesian diagrams
- Beam Spread Graphs
- Spectra and Color Planes
- CRI diagrams
- McAdams Graphs
- IES TM-30 Color Graphs
- Flux+Power f(Source Currents) Curves
- Photometric Files in LDT, IES, IESxml formats even including Flux+Power f(Source Currents) Curves
- ...



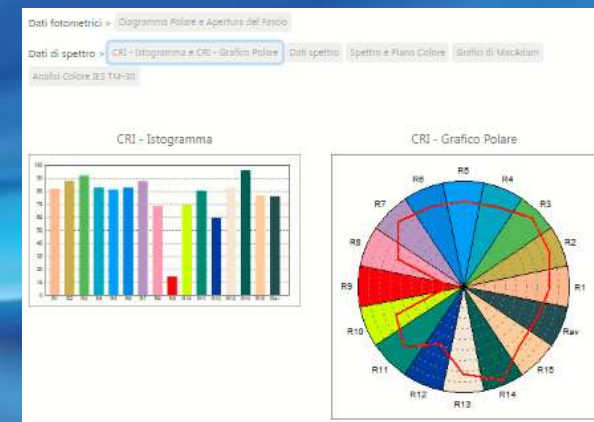
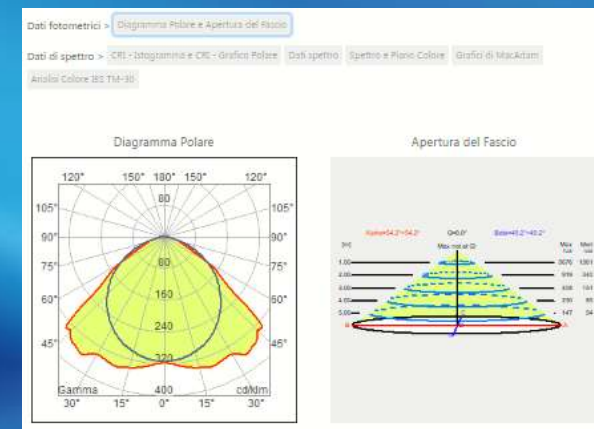


What can Pv Web process



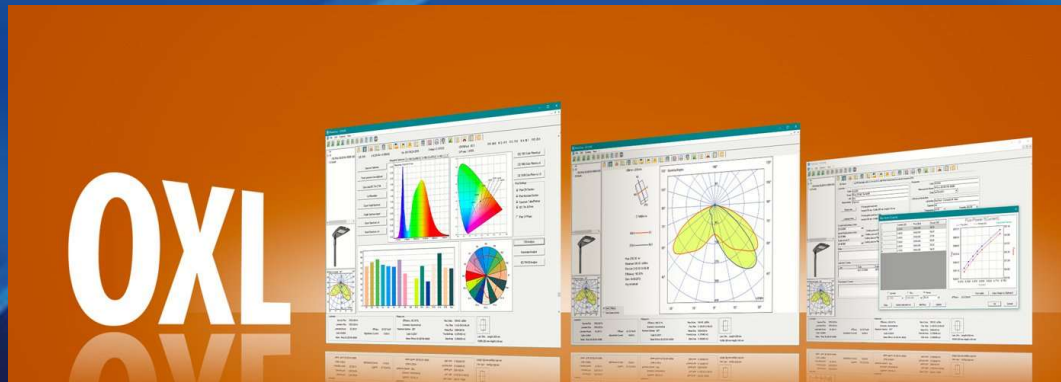
90%

Time saved
(compared to current solutions)





What can be included in the OXL ?



The OXL file is an xml file including

- General Product Data
- Images
- Technical Data Sheet
- Photometry + Spectrometry
- Flux+Power f(Source Currents) Curves
- Charts
 - regarding instruments/equipment
 - uncertainties
 - standards followed during the measurement

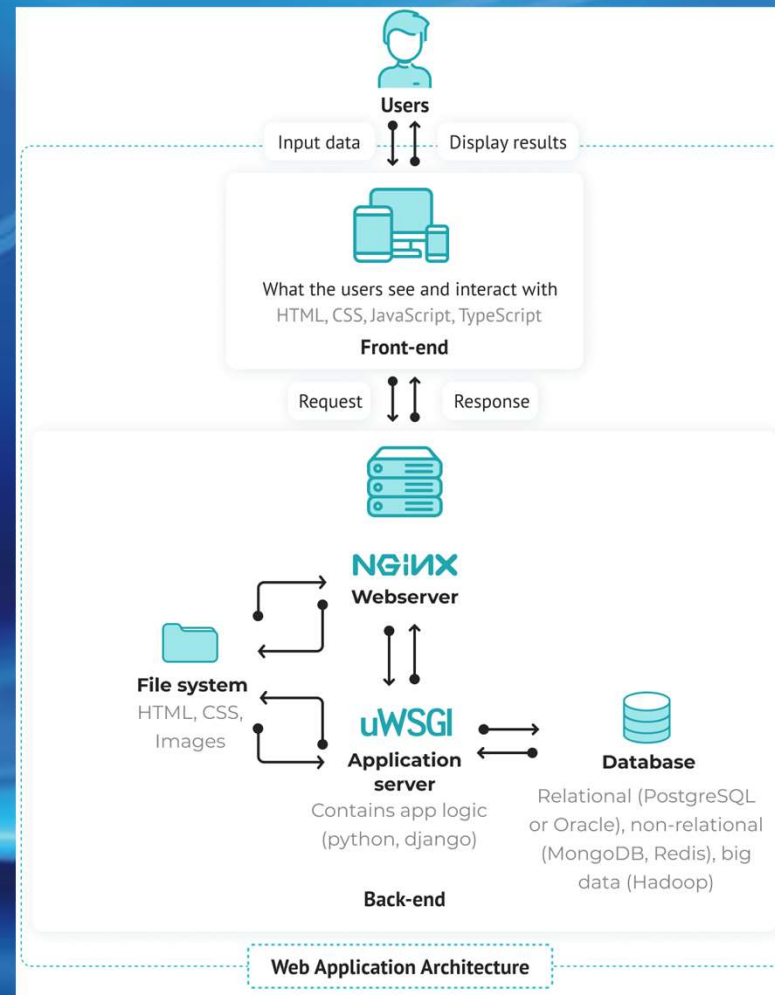


Pv Web 8 Structure

- Fully customizable graphic interface (theme, positioning, ...)
- Multilingual

- CLOUD-based calculations

- Minimization of required disk space
- On-the fly content generation



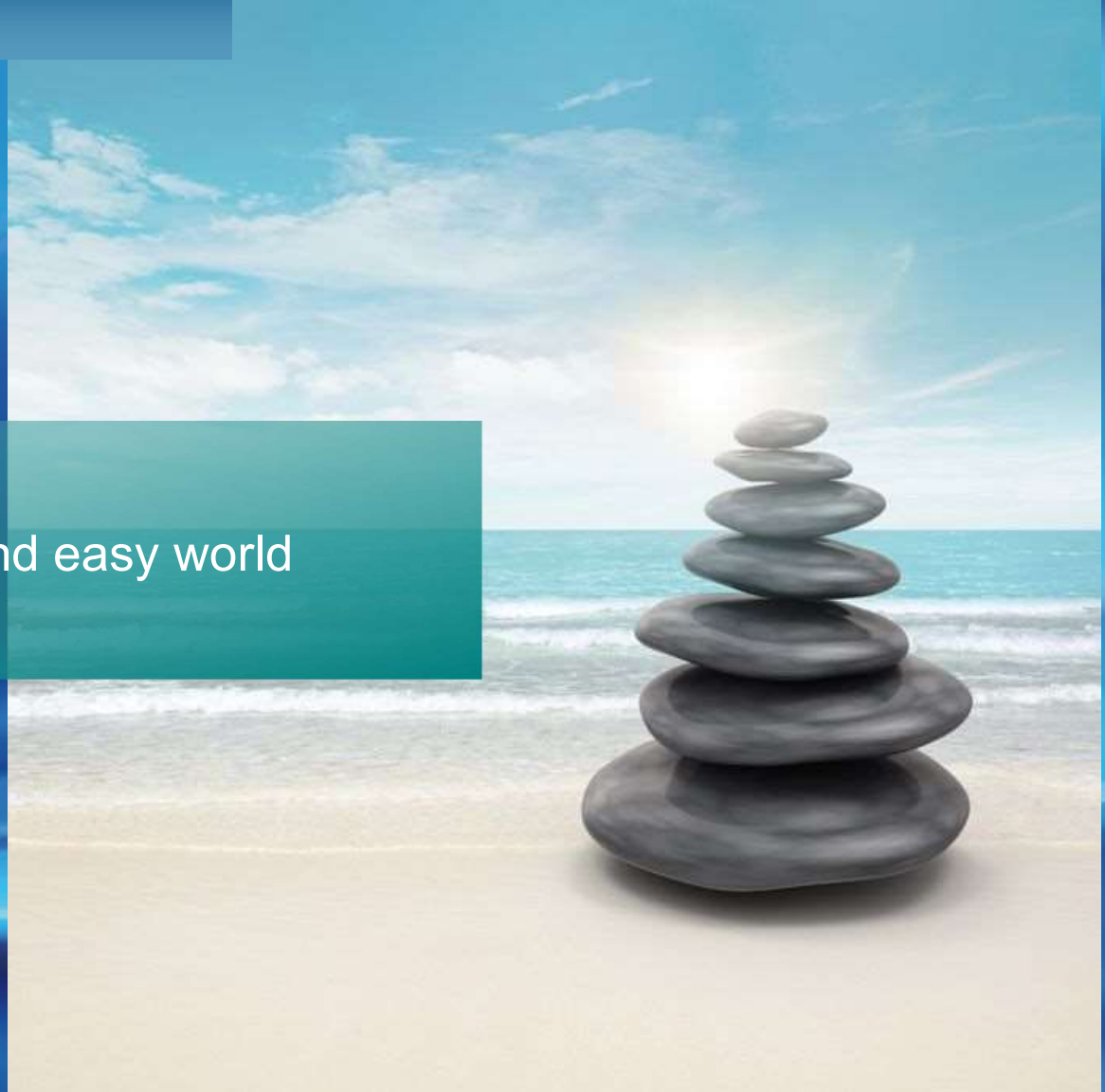
- Graphic interface embedded in the Website or hosted by us
- Possibility to communicate via API only

- Photometric and spectral calculation
- Graphs
- PDF Reports
- XLSX, CSV, PDFs, reports, etc. Import/Export

- High-availability
- Concurrency
- Multi-site

Perfect balance...

... for a faster and easy world



LITESTAR 4D – Photoview Web - Time-to-Market Reduction

Feel free to contact us
for any further information



Via Vico 54 – I-20007 Cornaredo (MI) Italy

Tel. +39 0293563258

Web www.oxytech.it