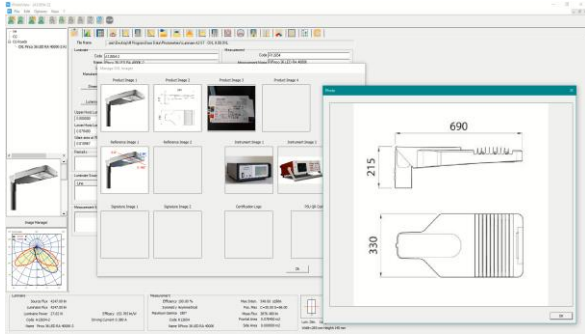


Comparison Chart of Open-Source Photo-Colorimetric Data Exchange Files

Description	Remarks	Units	Eulumdat [LDT]	IES LM-63 [IES]	UNI 11733-19 [XML]	IES TM-33-18 [XML]	OXL 2020 [OXL]
General Data							
Manufacturer's Name			✓	✓	✓	✓	✓
Measurement report number			✓	✓	✓	✓	✓
Luminaire description			✓	✓	✓	✓	✓
Luminaire code			✓	✓	✓	✓	✓
Measurement description			✗	✓	✓	✓	✓
Measurement code			✓	✓	✓	✓	✓
File Name (with extension)			✓	✓	✓	✓	✗
Measurement date			✓	✓	✓	✓	✓
Laboratory manager	Author of the document		✓	✗	✓	✓	✓
Luminaire bounding-box dimensions		[mm]	✓	✗	✓	✓	✓
Luminous area bounding-box dimensions		[mm]	✓	✓	✓	✓	✓
Product Images	Up to four+two images		✗	✗	✗	✗	✓
Management of luminaire 3D files			✗	✗	✗	✗	✓
							

Laboratory Environmental Parameters

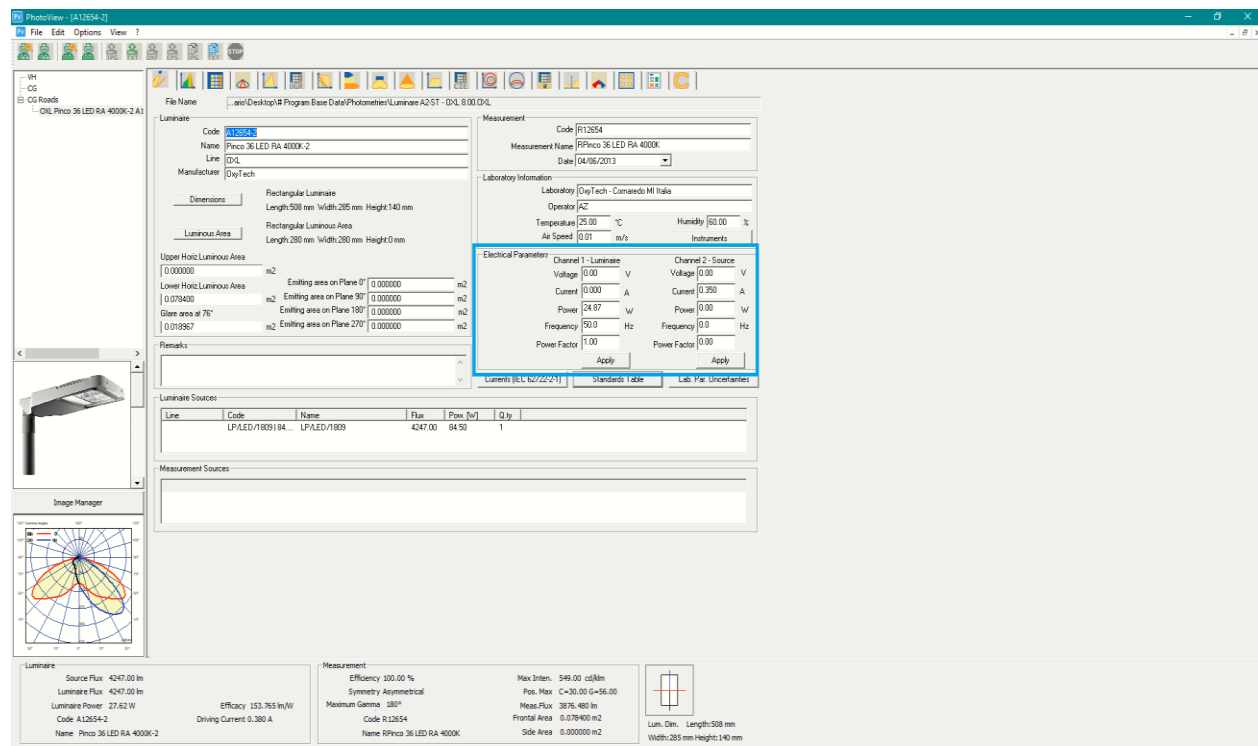
Laboratory Name			X	X	X	X	✓
Laboratory Technician			X	X	X	X	✓
Instruments List	Name, code, images, instrument manufacturer and type, quantities, calibration due date		X	X	X	X	✓
Temperature	[°C]		X	X	X	X	✓
Humidity	[%]		X	X	X	X	✓
Air speed	[m/s]		X	X	X	X	✓

The screenshot displays the PhotoView software interface with several windows open:

- Main Window:** Shows file information (File Name: .../Desktop/Program Base Data/Photometer/Luminaire A2-51 - OVL 8.00 OVL), luminaire details (Code: A12654-2, Name: Prico 36 LED RA 4000K-2), and measurement data (Code: R12654, Measurement Name: RPrco 36 LED RA 4000K, Date: 04/06/2013).
- Test Equipment Window:** Displays details for the GonioPhotometer (Gonio T2), Photocell and Luxmeter (C&G Labolux), and Integrating Sphere (Jeti Spectro 1201).
- Instrument Table Window:** A table listing various instruments with columns for Code, Type, Manufacturer, Model, Parameter, Quantity, Calibration Expiration, and Matrix Correction. The table includes entries for luxmeters, ammeters, voltmeters, anemometers, thermometers, spectrometers, and a PSU.
- Spectrum Correction Matrix Window:** Shows a graph for the Spectrum Correction Matrix with Wavelength [nm] on the x-axis and Correction on the y-axis.

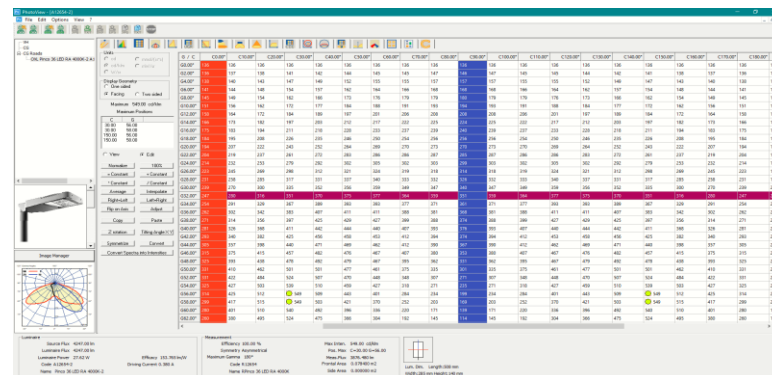
Luminaire Electrical Parameters

Total luminaire power (including driver)	Primary	[W]	✓	✓	✓	✓	✓
Luminaire power supply voltage	Primary	[V]	✗	✗	✗	✗	✓
Luminaire power supply current	Primary	[A]	✗	✗	✗	✗	✓
Frequency	Primary	[Hz]	✗	✗	✗	✗	✓
Power factor	Primary		✗	✗	✗	✗	✓
Total source power	Secondary	[W]	✗	✗	✗	✗	✓
Optical part supply voltage	Secondary	[V]	✗	✗	✗	✗	✓
Supply current	Secondary	[A]	✗	✗	✗	✗	✓
Frequency	Secondary	[Hz]	✗	✗	✗	✗	✓
Power factor	Secondary		✗	✗	✗	✗	✓



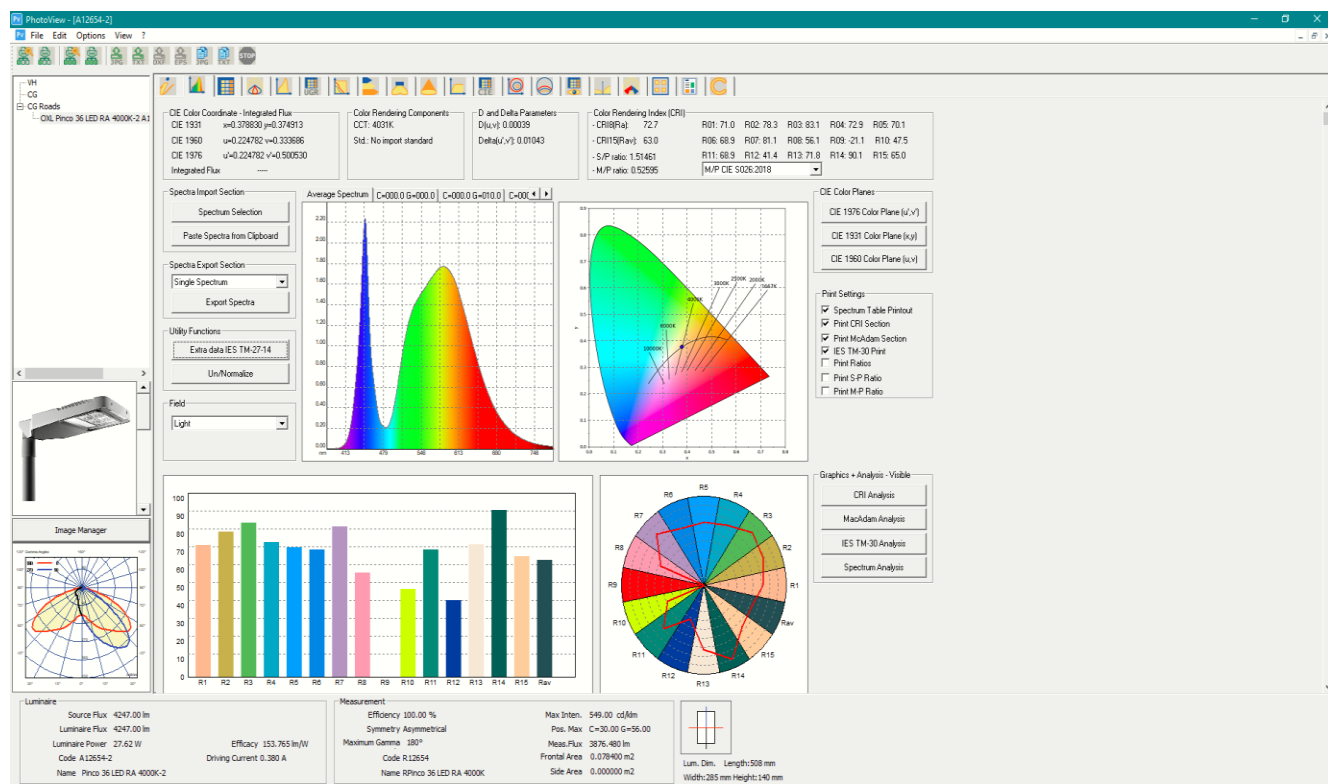
Photometric Parameters

Type of measurement system	C- γ		✓	✓	✓	✓	✓
	V-H (CIE 43)		✗	✓	✓	✓	✓
Source type indicator			✓	✓	✓	✓	✓
Symmetry indicator			✓	✓	✗	✗	✓
DFF (Downward Flux Fraction)			✓	✗	✗	✗	✗
LORL (Light output ratio of luminaire)			✗	✗	✗	✗	✗
Luminaire tilting angle during the measurement			✓	✓	✓	✓	✓
Number of sources sets			✓	✓	✓	✓	✓
Number of sources			✓	✓	✓	✓	✓
Types of sources			✓	✓	✓	✓	✓
Sources total Luminous flux		[lm]	✓	✓	✓	✓	✓
Number of half-planes	C-		✓	✓	✓	✓	✓
Number of angles	γ		✓	✓	✓	✓	✓
Number of half-planes	V-		✗	✓	✓	✓	✓
Number of angles	H		✗	✓	✓	✓	✓
Intensity matrix	Relative	[cd/klm]	✓	✓	✓	✓	✓
	Absolute	[cd]	✗	✓	✓	✓	✓
Intensity matrix symmetry	Rotosymmetrical		✓	✓	✗	✗	✓
	Double Symmetry		✓	✓	✗	✗	✓
	No Symmetry		✓	✓	✗	✗	✓



Colorimetric Parameters

Single Spectrum	From txt, csv, xlsx files		✗	✗	✓	✓	✓
Integrated Spectrum			✗	✗	✓	✓	✓
Multiple spectra from Goniospectrometry			✗	✗	✓	✓	✓
Color Temperature (CCT)		[K]	✓	✗	✓	✓	✓
Color Rendering Index (CRI)			✓	✗	✓	✓	✓



LED Driving Current Data

Flux-Power Chart f (Currents)

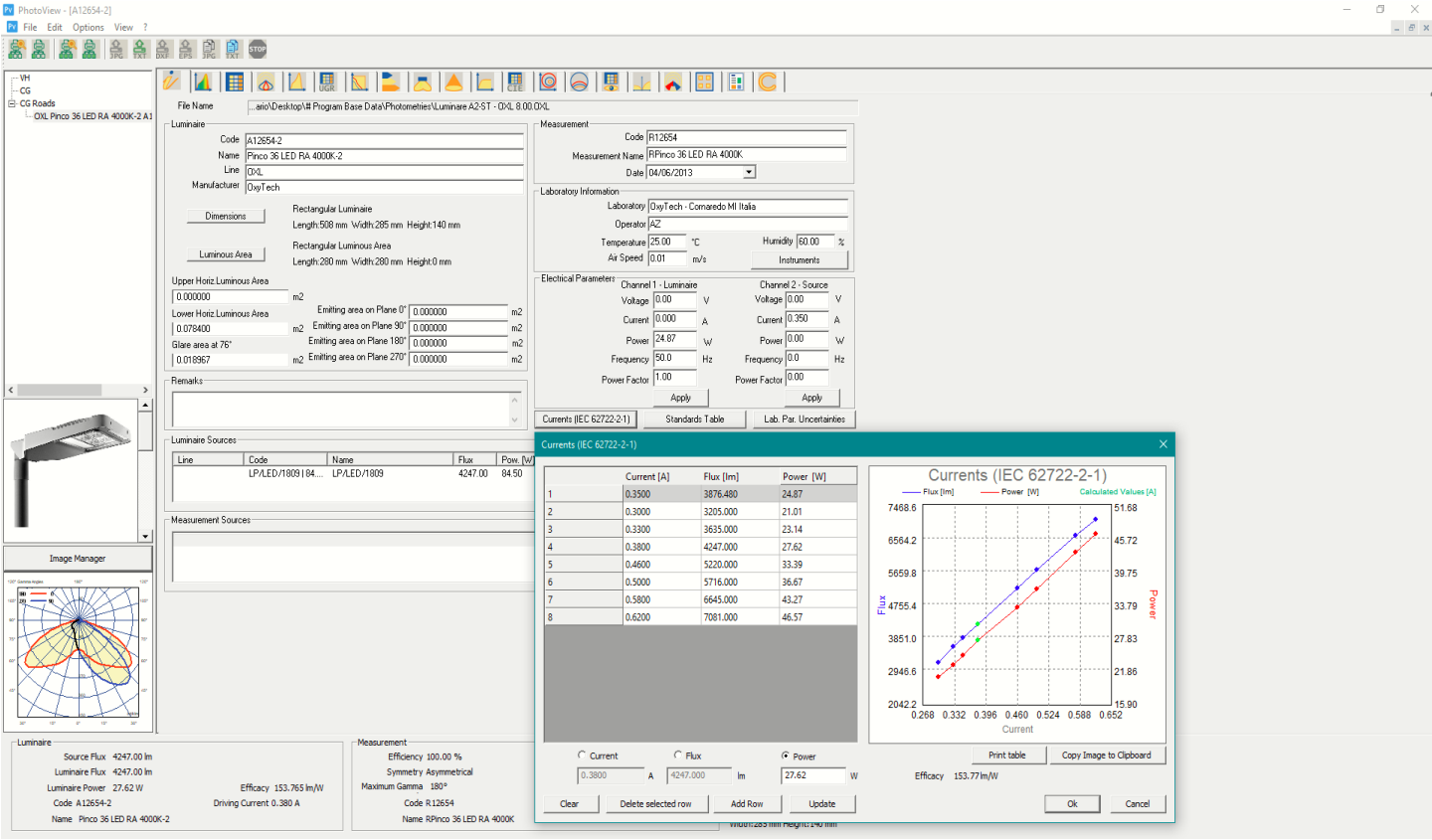
X

X

X

X

✓



Technical Data Sheet Data

Technical Data Sheet (over 60 parameters)

X

X

X

X

✓

The screenshot displays the OxyTech software interface, which is used for managing luminaire data. The main window shows a 'Data Sheet' for a specific luminaire model. The interface includes a file explorer on the left, a product list in the center, and a data entry form on the right. The data sheet preview on the right shows the OxyTech logo, product details, and a list of parameters.

Product Details:

- Product Code: A12654
- Product Description: Penco 36 LED RA 4000K
- Manufacturer: OxyTech

Electrical Specifications:

Parameter	Value
Power (W)	27.62
Current (A)	0.380
Voltage (V)	24.0
Power Factor	0.98
Efficiency (%)	153.765

Optical Data:

- Source Flux: 4247.00 lm
- Luminaire Flux: 4247.00 lm
- Luminaire Power: 27.62 W
- Code: A12654-2
- Name: Penco 36 LED RA 4000K-2

Measurement Data:

- Efficiency: 100.00 %
- Symmetry: Asymmetrical
- Maximum Gamma: 180°
- Code: R12654
- Name: R12654

Physical Dimensions:

- Max. Inten.: 549.00 cd/m²
- Pos. Max. C=30.00 G=56.00
- Max. Flux: 3876.480 lm
- Frontal Area: 0.078400 m²
- Side Area: 0.000000 m²
- Lum. Dim.: Length: 508 mm, Width: 285 mm, Height: 140 mm

Accessory Files

PDF File			x	x	x	x	√
Txt File			x	x	x	x	√
XLSX File			x	x	x	x	√
Wmf File			x	x	x	x	√
Doc File			x	x	x	x	√