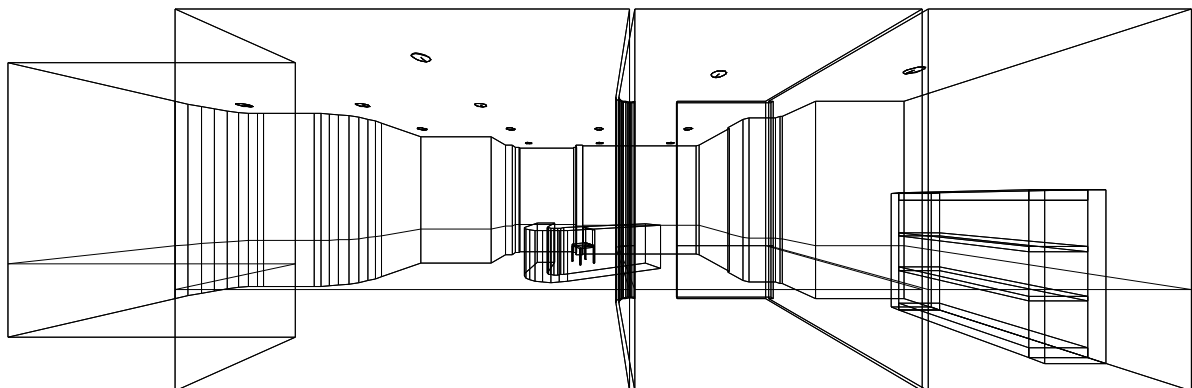


## LEAMAN BUILDING

Installation Notes: Main Office  
Customer: KKH Ltd.  
Project Code: 1007-0345  
Date: 24/08/2006

Notes:  
Copyright OxyTech Srl



DESIGNER NAME: OxyTech Srl  
Address: PO BOX 1 - I-20017 Rho MI  
Tel.-Fax: Tel.+39/0293563258 Fax +39/0293563235

Remarks:  
Demo Project - No link with reality

## 1.1 General Notes

Surface	Dimensions [m]	Angle[°]	Color	Coefficient Reflectance	Average Illum. [lux]	Ave.Luminance [cd/m <sup>2</sup> ]
Floor	11.85x6.10	Plane	RGB=227,202,168	65%	55	11
Wall 74	3.20x1.25	-90°	RGB=255,247,185	75%	29	7
Wall 73	3.20x0.13	-95°	RGB=255,247,185	75%	40	10
Wall 72	3.20x0.13	-108°	RGB=255,247,185	75%	40	10
Wall 71	3.20x0.13	-120°	RGB=255,247,185	75%	40	10
Wall 70	3.20x0.13	-133°	RGB=255,247,185	75%	41	10
Wall 69	3.20x0.13	-146°	RGB=255,247,185	75%	42	10
Wall 68	3.20x0.13	-158°	RGB=255,247,185	75%	43	10
Wall 67	3.20x0.13	-171°	RGB=255,247,185	75%	46	11
Wall 66	3.20x0.13	176°	RGB=255,247,185	75%	49	12
Wall 65	3.20x0.90	-178°	RGB=255,247,185	75%	59	14
Wall 64	3.20x0.14	174°	RGB=255,247,185	75%	28	7
Wall 63	3.20x0.14	-173°	RGB=255,247,185	75%	26	6
Wall 62	3.20x0.14	-160°	RGB=255,247,185	75%	28	7
Wall 61	3.20x0.14	-147°	RGB=255,247,185	75%	36	9
Wall 60	3.20x0.14	-134°	RGB=255,247,185	75%	43	10
Wall 59	3.20x0.14	-121°	RGB=255,247,185	75%	50	12
Wall 58	3.20x0.14	-108°	RGB=255,247,185	75%	56	13
Wall 57	3.20x0.14	-95°	RGB=255,247,185	75%	63	15
Wall 56	3.20x1.25	-90°	RGB=255,247,185	75%	62	15
Wall 55	3.20x1.80	-180°	RGB=255,247,185	75%	51	12
Wall 54	3.20x1.00	-90°	RGB=255,247,185	75%	59	14
Wall 53	3.20x0.20	-180°	RGB=255,247,185	75%	40	10
Wall 52	3.20x0.35	-90°	RGB=255,247,185	75%	49	12
Wall 51	3.20x0.10	-180°	RGB=255,247,185	75%	50	12
Wall 50	3.20x0.10	-90°	RGB=255,247,185	75%	34	8
Wall 49	3.20x1.65	-180°	RGB=255,247,185	75%	52	13
Wall 48	3.20x0.10	90°	RGB=255,247,185	75%	22	5.3
Wall 47	3.20x0.10	-180°	RGB=255,247,185	75%	23	5.5
Wall 46	3.20x0.35	90°	RGB=255,247,185	75%	28	7
Wall 45	3.20x0.20	-180°	RGB=255,247,185	75%	58	14
Wall 44	3.20x0.13	-90°	RGB=255,247,185	75%	56	13
Wall 43	3.20x3.35	-180°	RGB=255,247,185	75%	70	17
Wall 42	3.20x0.11	135°	RGB=255,247,185	75%	51	12
Wall 41	3.20x1.85	90°	RGB=255,247,185	75%	53	13
Wall 40	3.20x0.11	45°	RGB=255,247,185	75%	49	12
Wall 39	3.20x0.65	90°	RGB=255,247,185	75%	48	11
Wall 38	3.20x0.11	135°	RGB=255,247,185	75%	13	3.1
Wall 37	3.20x0.52	-180°	RGB=255,247,185	75%	6	1.5
Wall 36	3.20x0.12	90°	RGB=255,247,185	75%	2.7	0.6
Wall 35	3.20x0.05	-180°	RGB=255,247,185	75%	0.21	0.05
Wall 34	3.20x0.78	91°	RGB=255,247,185	75%	12	2.8
Wall 33	3.20x1.43	-180°	RGB=255,247,185	75%	22	5
Wall 32	3.20x2.15	90°	RGB=255,247,185	75%	14	3
Wall 31	3.20x2.20	0°	RGB=255,247,185	75%	22	5
Wall 30	3.20x2.15	-90°	RGB=255,247,185	75%	20	5
Wall 29	3.20x0.07	-180°	RGB=255,247,185	75%	12	2.9
Wall 28	3.20x0.05	-90°	RGB=255,247,185	75%	12	2.8
Wall 27	3.20x1.55	0°	RGB=255,247,185	75%	30	7
Wall 26	3.20x0.05	90°	RGB=255,247,185	75%	14	3.3
Wall 25	3.20x1.43	-180°	RGB=255,247,185	75%	24	6
Wall 24	3.20x2.15	90°	RGB=255,247,185	75%	19	5
Wall 23	3.20x2.40	0°	RGB=255,247,185	75%	21	5
Wall 22	3.20x1.95	-90°	RGB=255,247,185	75%	21	5
Wall 21	3.20x0.05	-94°	RGB=255,247,185	75%	16	3.7
Wall 20	3.20x0.05	-108°	RGB=255,247,185	75%	17	4.0
Wall 19	3.20x0.05	-122°	RGB=255,247,185	75%	18	4.2
Wall 18	3.20x0.05	-136°	RGB=255,247,185	75%	18	4.2
Wall 17	3.20x0.05	-150°	RGB=255,247,185	75%	17	4.0
Wall 16	3.20x0.05	-165°	RGB=255,247,185	75%	16	3.7
Wall 15	3.20x0.05	-179°	RGB=255,247,185	75%	14	3.2
Wall 14	3.20x0.05	167°	RGB=255,247,185	75%	11	2.6
Wall 13	3.20x0.05	-90°	RGB=255,247,185	75%	22	5.1
Wall 12	3.20x0.06	-7°	RGB=255,247,185	75%	36	8
Wall 11	3.20x0.06	6°	RGB=255,247,185	75%	39	9
Wall 10	3.20x0.06	19°	RGB=255,247,185	75%	40	10

Surface	Dimensions [m]	Angle[°]	Color	Coefficient Reflectance	Average Illum. [lux]	Ave.Luminance [cd/m²]
Wall 9	3.20x0.06	32°	RGB=255,247,185	75%	40	10
Wall 8	3.20x0.06	44°	RGB=255,247,185	75%	39	9
Wall 7	3.20x0.06	57°	RGB=255,247,185	75%	38	9
Wall 6	3.20x0.06	70°	RGB=255,247,185	75%	35	8
Wall 5	3.20x0.06	83°	RGB=255,247,185	75%	31	7.4
Wall 4	3.20x1.95	90°	RGB=255,247,185	75%	23	5.4
Wall 3	3.20x3.80	0°	RGB=255,247,185	75%	40	10
Wall 2	3.20x0.90	-90°	RGB=255,247,185	75%	25	6.1
Wall 1	3.20x3.35	0°	RGB=255,247,185	75%	35	8
Ceiling	6.10x11.85	Plane	RGB=216,254,217	75%	1.0	0.2

Dimensions of Room Bounding Box [m]: 11.85x6.10x3.20  
 Calculation Points Grid of Bounding Box [m]: direction X 0.10 - Y 0.10 - Z 0.10  
 Specific Wattage of Working Plane [W/m2] 6.722  
 Specific Lighting Power of the Working Plane [W/(m2 \* 100lux)] 8.773  
 Total Wattage [kW]: 0.338

## 1.2 Uniformity Installation Parameters

Surface	Results	Average	Minimum	Maximum	Min/Ave	Min/Max	Ave/Max
Working Plane (h=0.85 m)	Horizontal Illuminance (E)	77 lux	0 lux	144 lux	0.00	0.00	0.53
Floor	Horizontal Illuminance (E)	55 lux	0 lux	105 lux	0.00	0.00	0.53
Floor	Luminance (L)	11 cd/m²	0 cd/m²	22 cd/m²	0.00	0.00	0.53

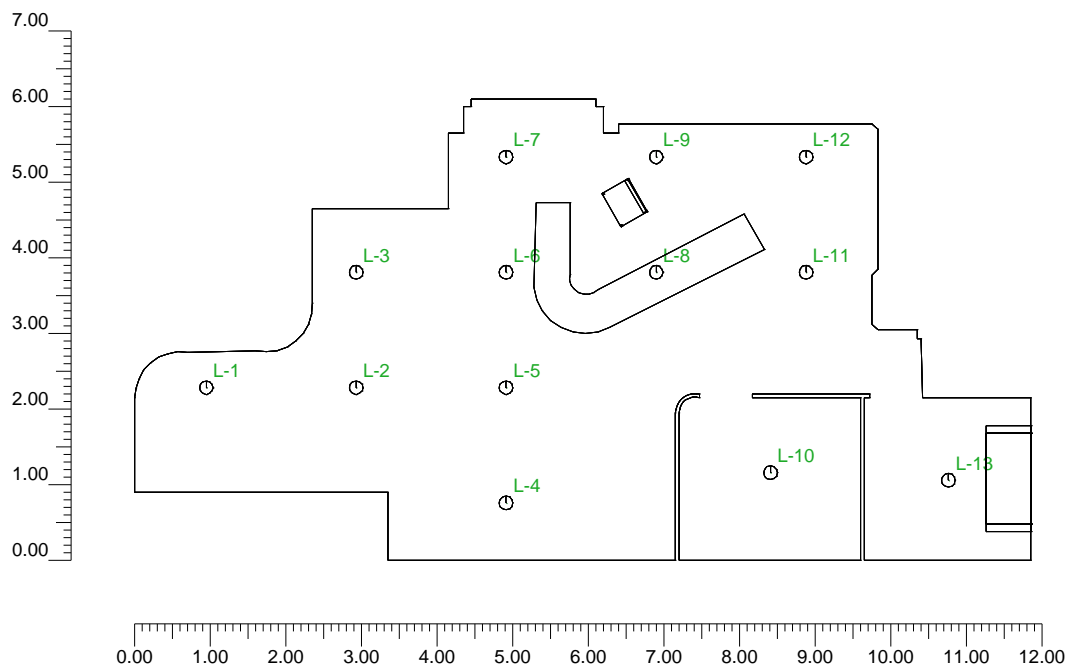
Calculation Type Only Dir. + Furnit. + Shad.

### Visual Comfort

Observer	Observer Position	Direction of Observation	VCP	UGR	CGI
1	(x=1.00;y=1.00;z=1.50)m	(x=2.00;y=2.00;z=1.50)m	2.21	22.96	23.94

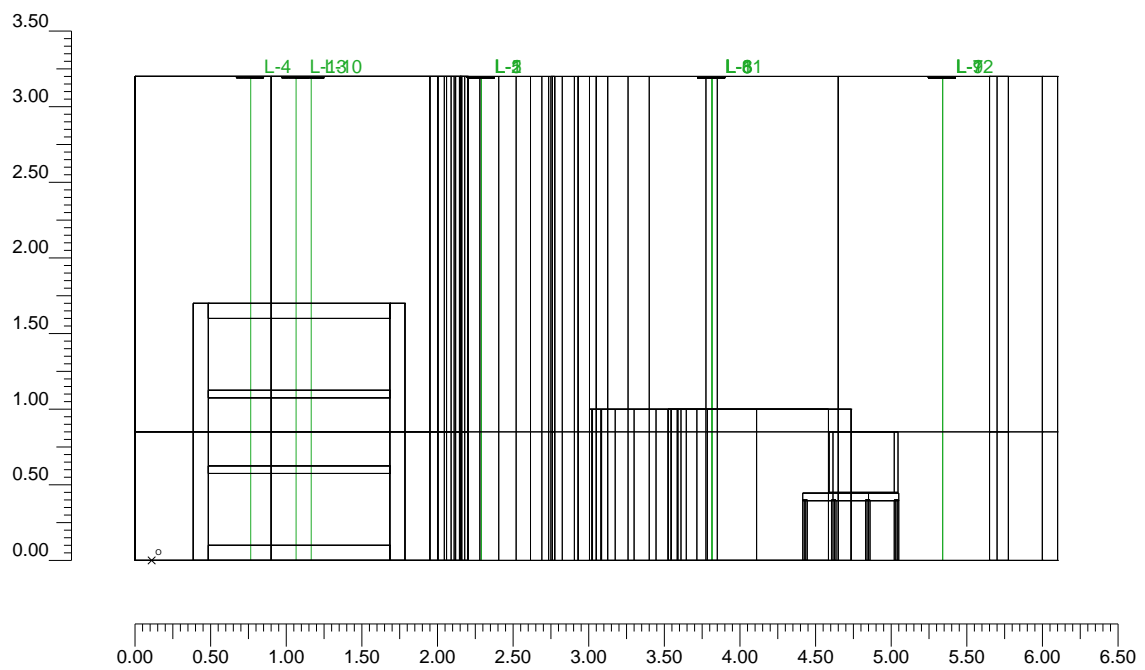
## 2.1 2D Plane View

Scale 1/100



## 2.2 Lateral View

Scale 1/50



### 3.1 Luminaire/Measurements Info

Ref.	Line	Luminaire Name (Measur. Name)	Luminaire Code (Measur. Code)	Luminaires N.	Ref.Lamps	Lamps N.
A	ASTRO DOWNLIGHT	DHP 213 TC-D 2X13W / M (DHP 218 TC-D 2X18W / M)	DHP 213 / M (DHP 218 / M)	13	LMP-A	2

### 3.2 Lamps Info

Ref.Lamps	Type	Code	Flux [lm]	Wattage [W]	Color [°K]	N.
LMP-A	FSQ 13	DD1321	900	13	4000	26

### 3.3 Luminaire Table

Ref.	Lum.	On	Luminaire Position X[m] Y[m] Z[m]	Luminaire Rotation X[°] Y[°] Z[°]	Luminaire Code	Coeff. Mant.	Lamp Code	Flux [lm]
A	1	X	12.65;2.18;3.19	0;0;0	DHP 213 / M	0.80	DD1321	2*900
	2	X	14.63;2.18;3.19	0;0;0		0.80		
	3	X	14.63;3.70;3.19	0;0;0		0.80		
	4	X	16.62;0.65;3.19	0;0;0		0.80		
	5	X	16.62;2.18;3.19	0;0;0		0.80		
	6	X	16.62;3.70;3.19	0;0;0		0.80		
	7	X	16.62;5.23;3.19	0;0;0		0.80		
	8	X	18.60;3.70;3.19	0;0;0		0.80		
	9	X	18.60;5.23;3.19	0;0;0		0.80		
	10	X	20.11;1.05;3.19	0;0;0		0.80		
	11	X	20.58;3.70;3.19	0;0;0		0.80		
	12	X	20.58;5.23;3.19	0;0;0		0.80		
	13	X	22.47;0.95;3.19	0;0;0		0.80		

### 4.1 Illuminance Values on:Pavimento

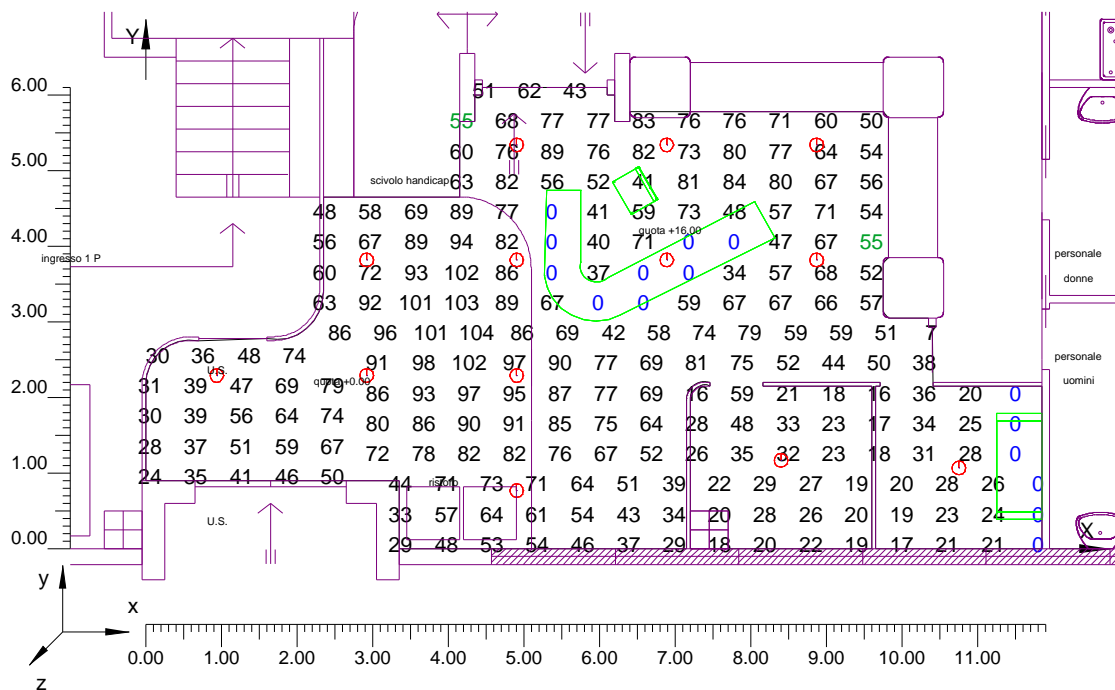
O (x:11.71 y:-0.11 z:0.00)	Results	Average	Minimum	Maximum	Min/Ave	Min/Max	Ave/Max
DX:0.10 DY:0.10	Horizontal Illuminance (E)	55 lux	0 lux	105 lux	0.00	0.00	0.53

Calculation Type

Only Dir. + Furnit. + Shad.

Scale 1/100

Not all the calculated points are visible



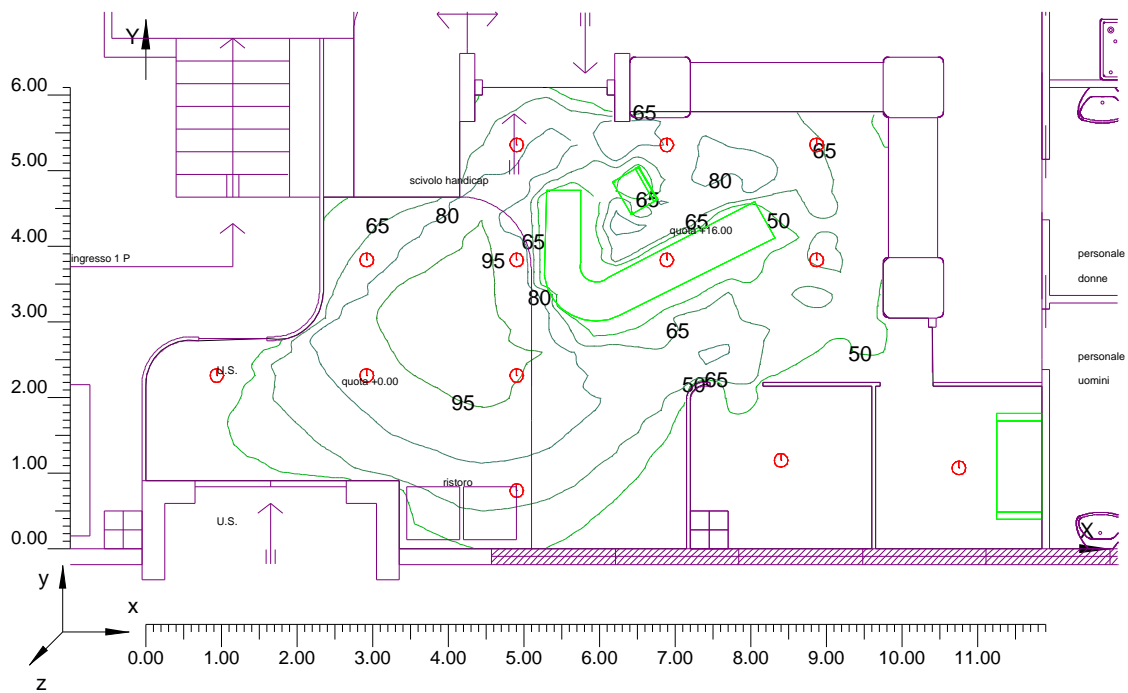
## 4.2 Isolux Curves on:Pavimento\_1

O (x:11.71 y:-0.11 z:0.00)	Results	Average	Minimum	Maximum	Min/Ave	Min/Max	Ave/Max
DX:0.10 DY:0.10	Horizontal Illuminance (E)	55 lux	0 lux	105 lux	0.00	0.00	0.53

Calculation Type

Only Dir. + Furnit. + Shad.

Scale 1/100





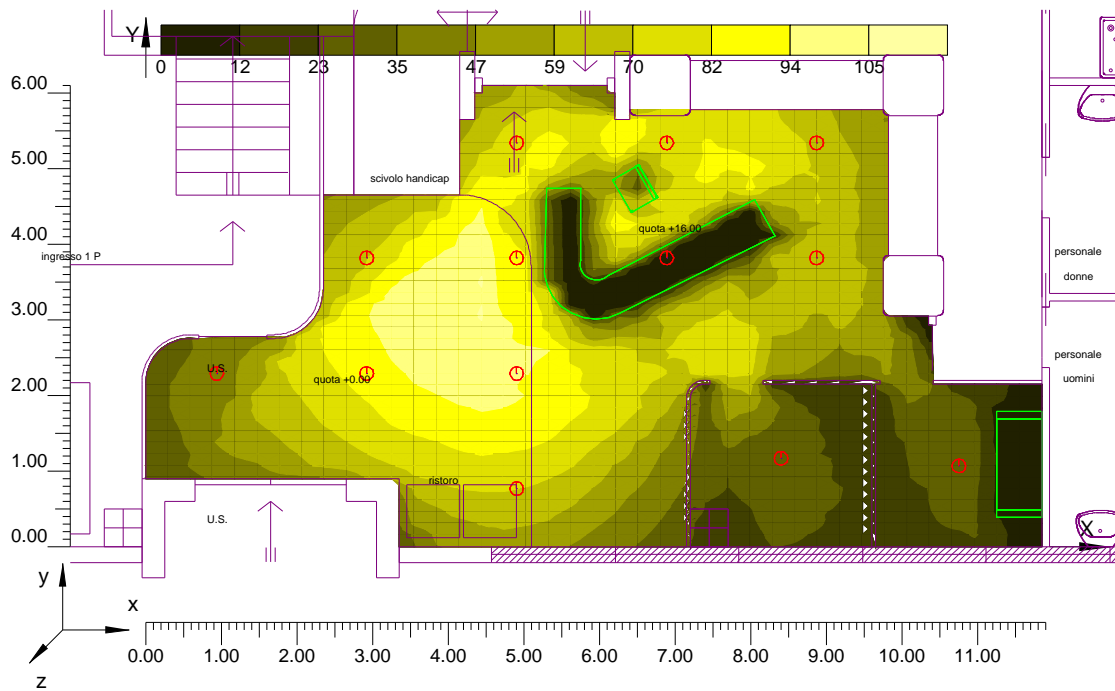
### 4.3 Illuminance Spot Diagram on:Pavimento\_1\_1

O (x:11.71 y:-0.11 z:0.00)	Results	Average	Minimum	Maximum	Min/Ave	Min/Max	Ave/Max
DX:0.10 DY:0.10	Horizontal Illuminance (E)	55 lux	0 lux	105 lux	0.00	0.00	0.53

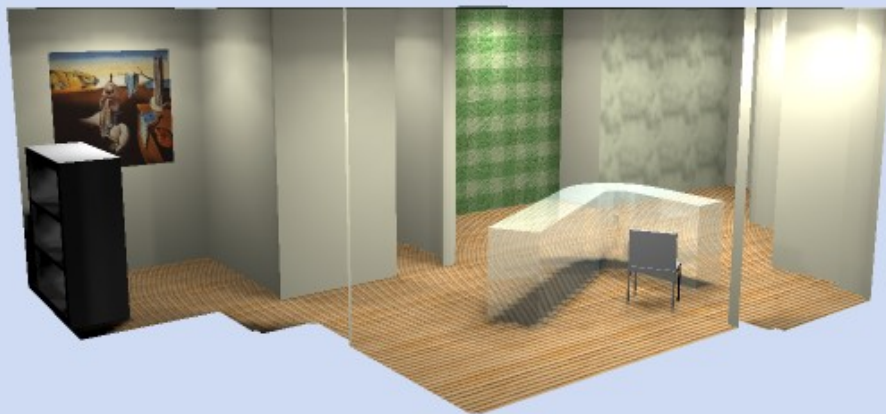
Calculation Type

Only Dir. + Furnit. + Shad.

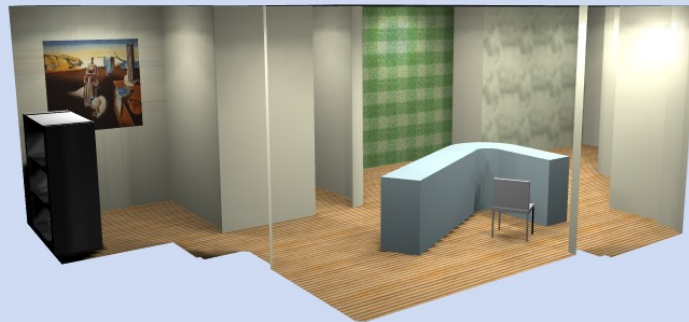
Scale 1/100



5.1 Image: 00101



5.2 Image: 00102



<b>General Info</b>	<b>1</b>
<b>1. Project Data</b>	
1.1 General Notes	2
1.2 Uniformity Installation Parameters	3
<b>2. Project Views</b>	
2.1 2D Plane View	4
2.2 Lateral View	5
<b>3. Luminaire Data</b>	
3.1 Luminaire/Measurements Info	6
3.2 Lamps Info	6
3.3 Luminaire Table	6
<b>4. Results Table</b>	
4.1 Illuminance Values on:Pavimento	7
4.2 Isolux Curves on:Pavimento_1	8
4.3 Illuminance Spot Diagram on:Pavimento_1_1	9
<b>5. Images</b>	
5.1 Image: 00101	10
5.2 Image: 00102	11