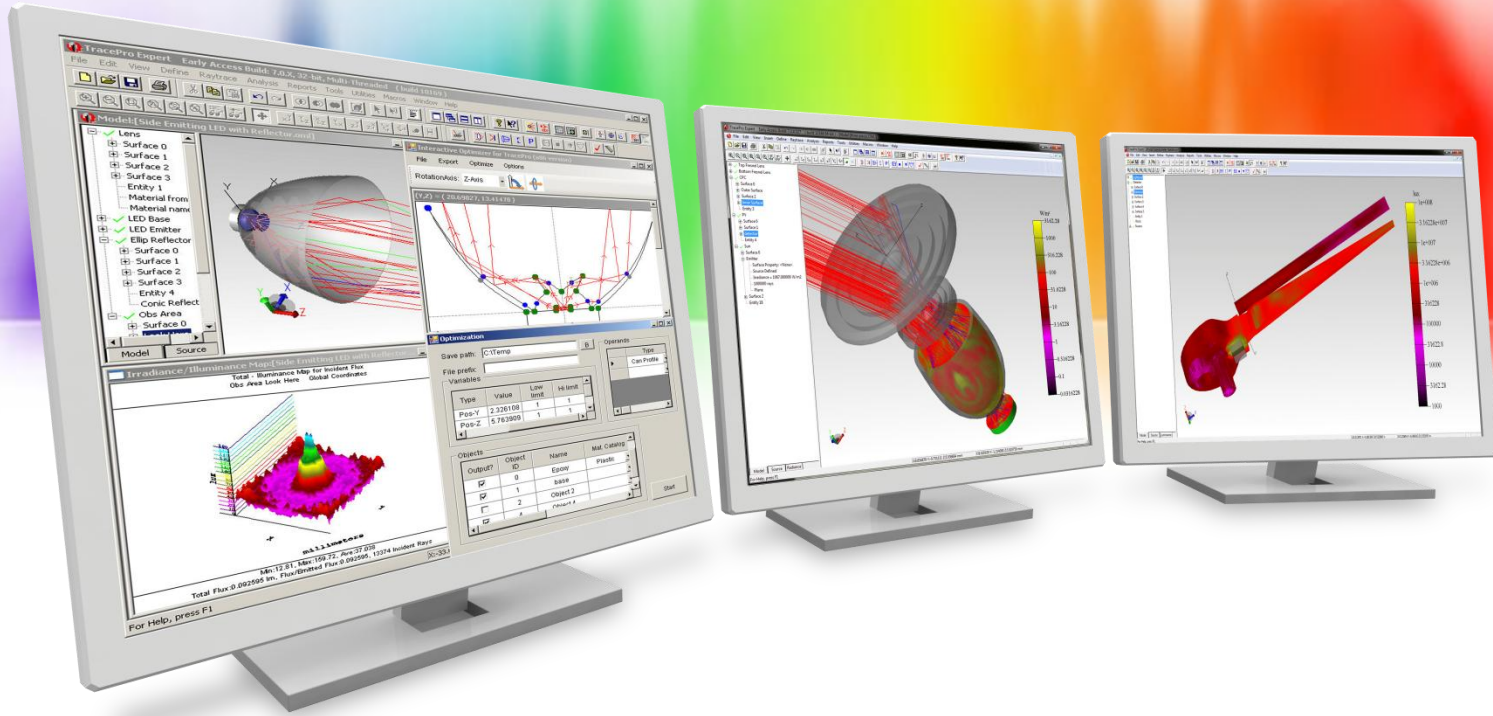


New Features in TracePro

New TracePro Release Numbering

- TracePro has switched to a yearly naming scheme. TracePro 2026 version 26.1 was the first release of TracePro in 2026.
- Official releases of TracePro 2026 will debut approximately every 90 days, on or around the 10th of the month, starting in February.



New Features in TracePro 2026 26.2

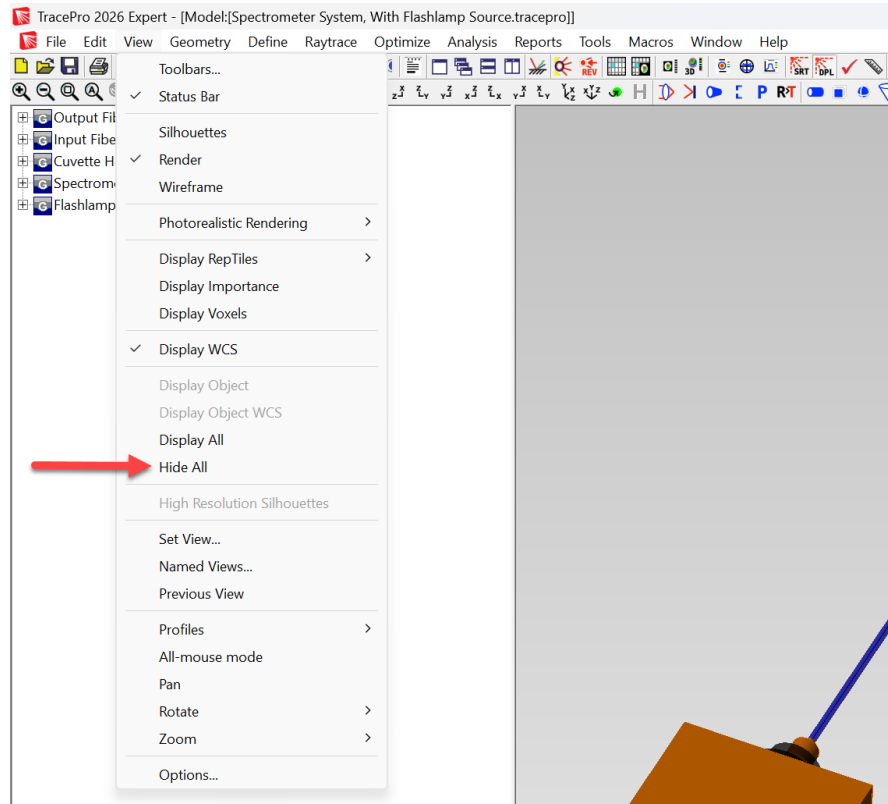
TracePro 2026 26.2

- **TracePro**
 - New Hide All option
 - New Scheme macro commands
 - View:hide-all-objects
 - Analysis:set-ray-colors

TracePro 2026 26.2

➤ TracePro

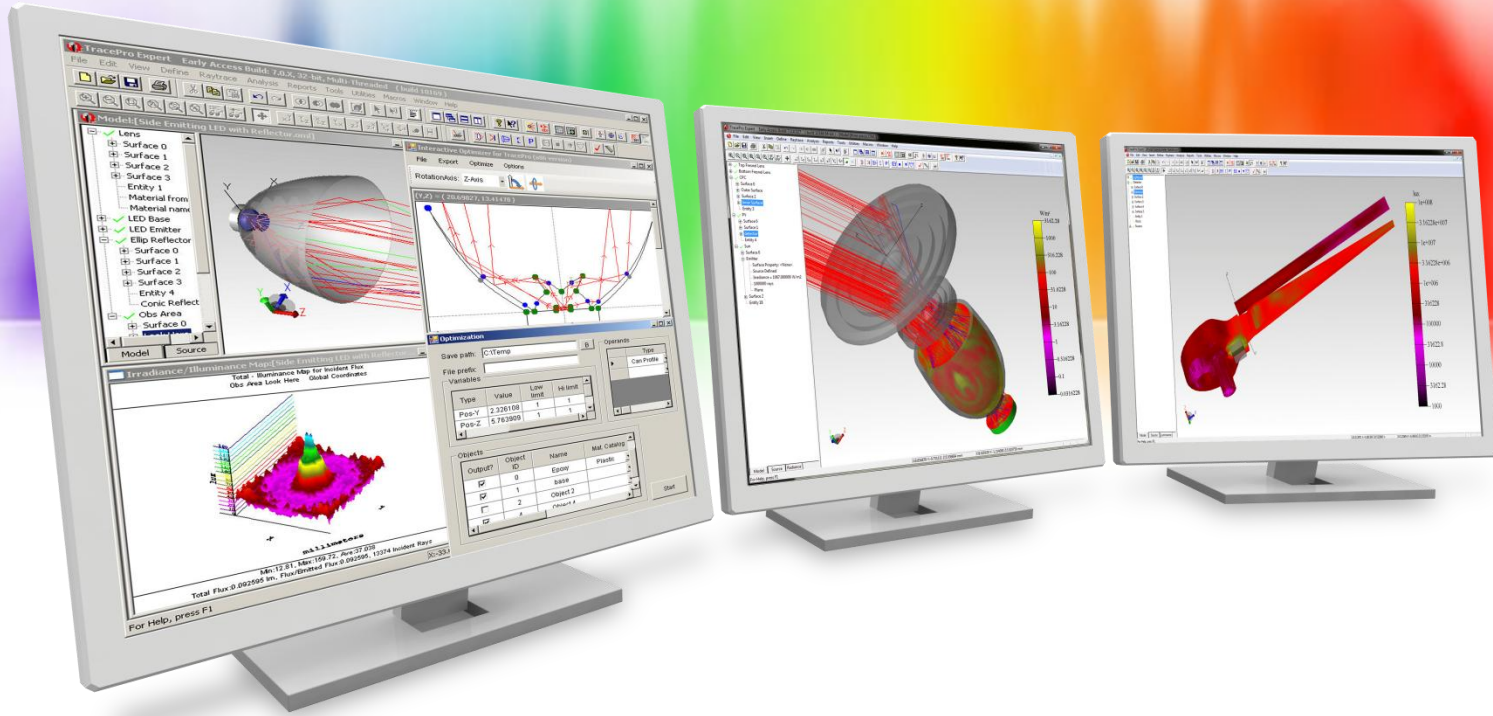
- Hide All – New ability to hide all objects in a TracePro model with one command. The Hide All command is in the View menu.



TracePro 2026 26.2

➤ TracePro

- New Scheme macro command - View:hide-all-objects
 - Scheme macro command for the new Hide All feature
- New Scheme macro command - Analysis:set-ray-colors
 - Scheme macro command to set and control ray color options in TracePro



New Features in TracePro 2026 26.1

TracePro 2026 26.1

➤ TracePro

- Sequence Editor – New ability to split a doublet into singlets
- Sequence Editor – New ability to merge singlets into a doublet

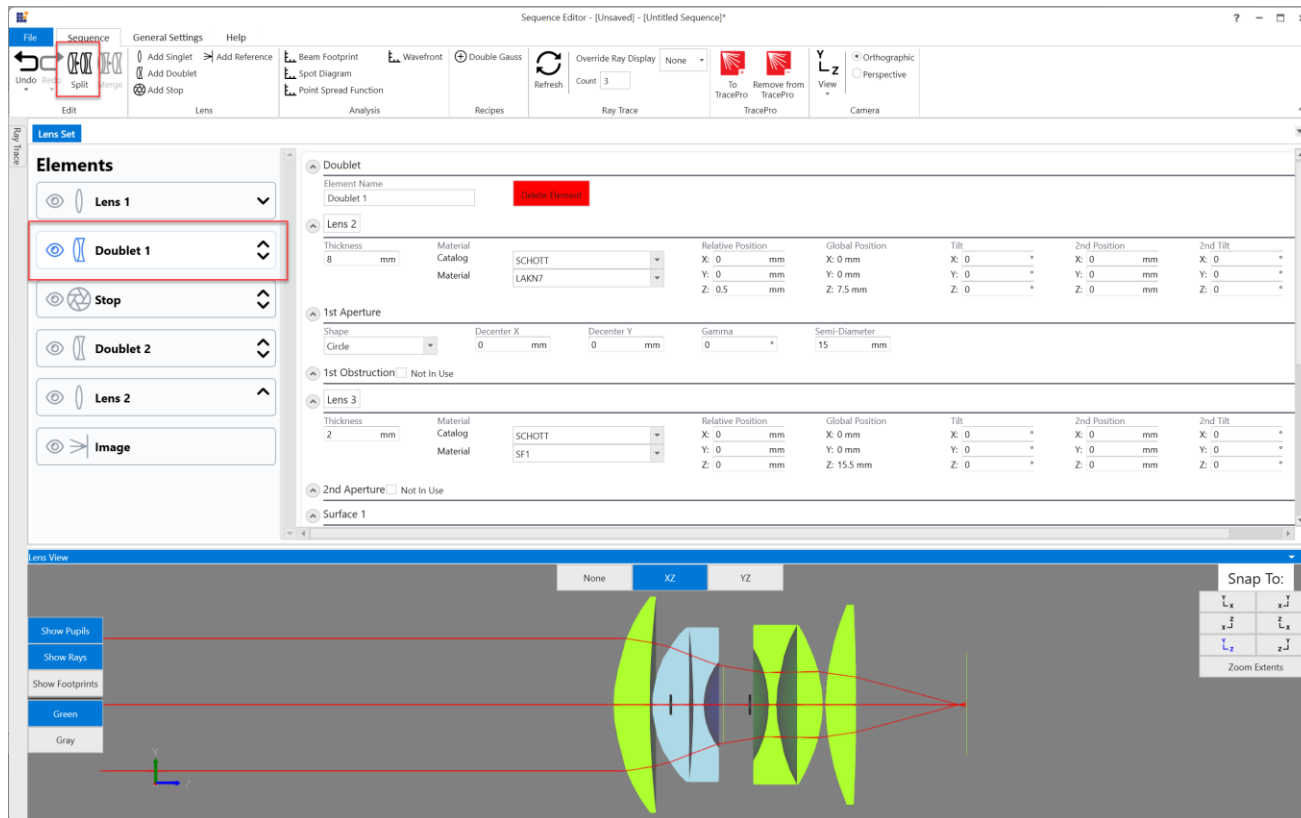
➤ RayViz

- New Ray Colors option

TracePro 2026 26.1

➤ TracePro

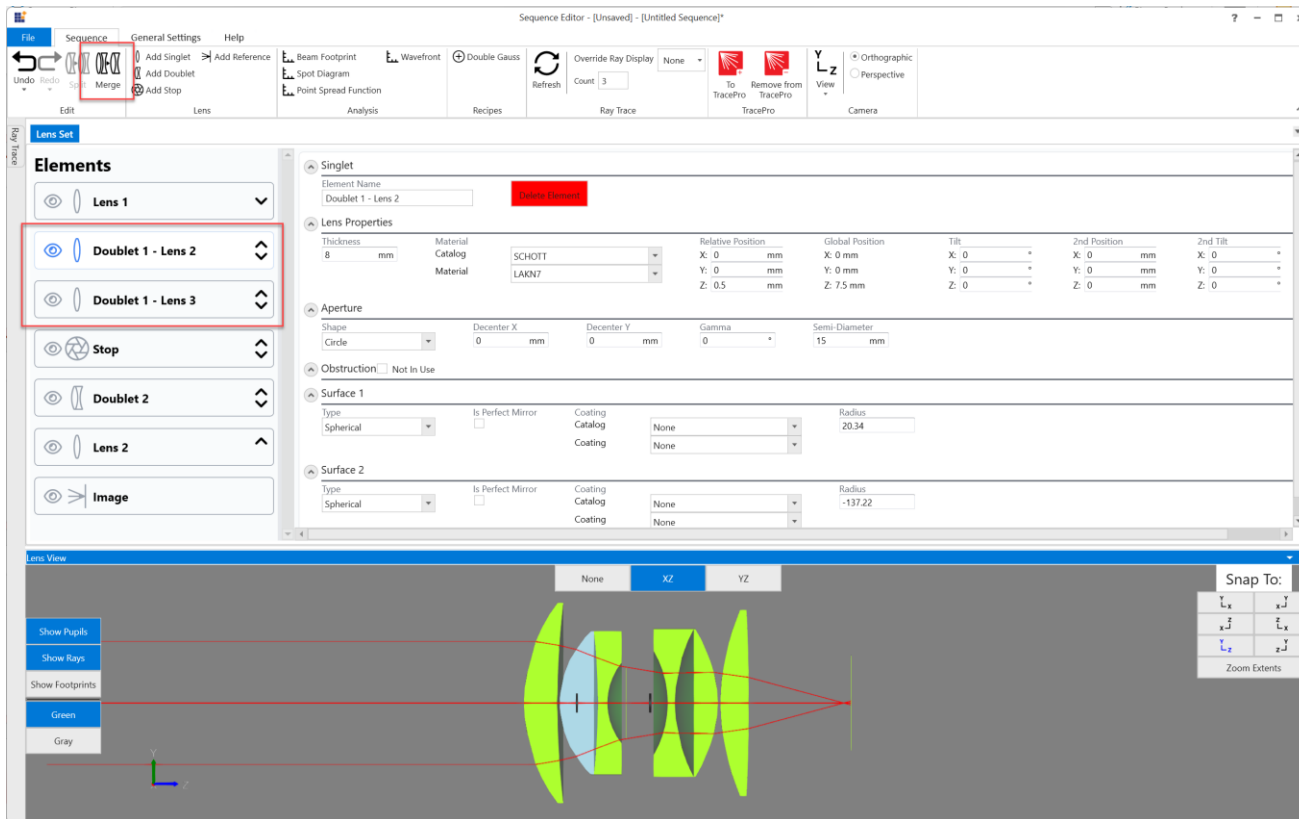
➤ Sequence Editor – New ability to split a doublet into singlets



TracePro 2026 26.1

➤ TracePro

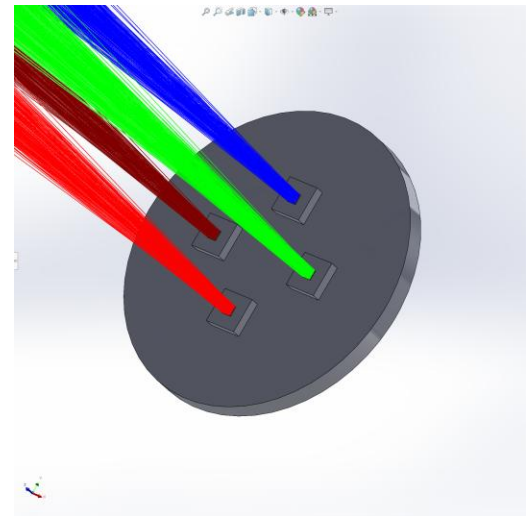
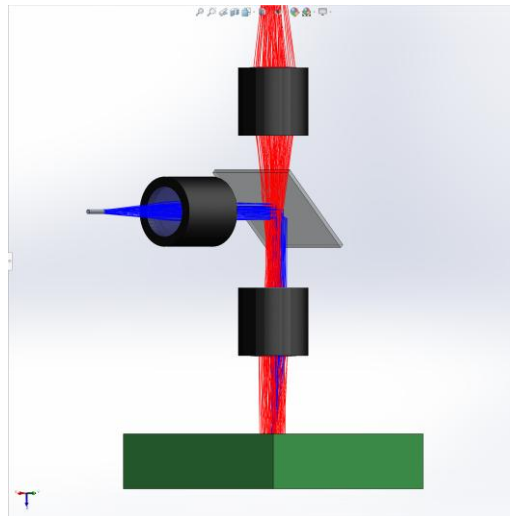
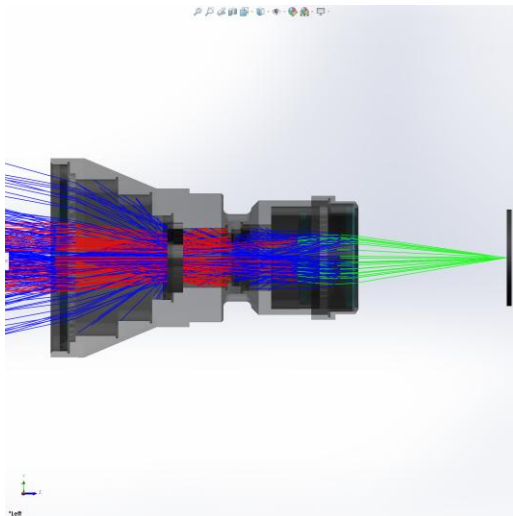
➤ Sequence Editor – New ability to merge singlets into a doublet

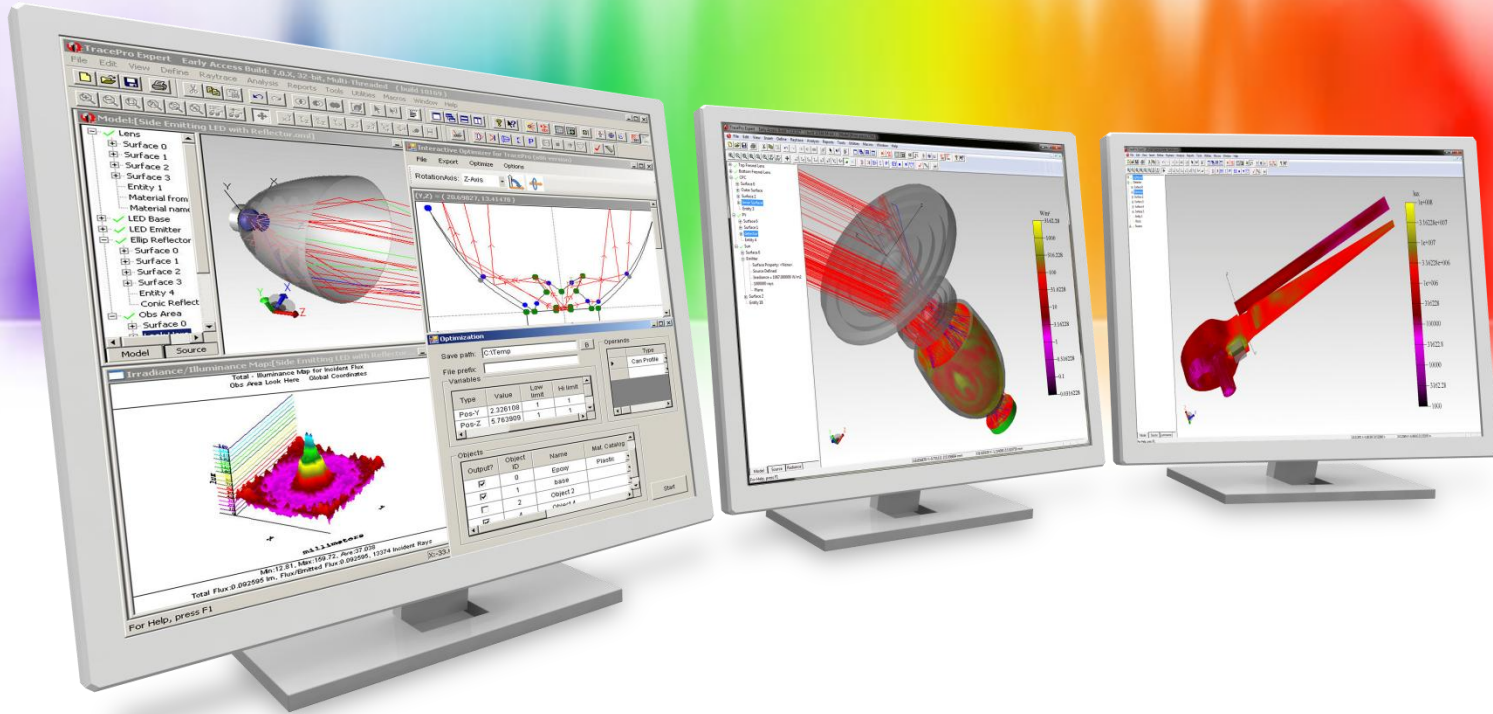


TracePro 2026 26.1

➤ RayViz

- New Ray Colors option
- Flux-based ray colors, Wavelength-based ray colors, Source-based ray colors, and All rays one color options are now available in RayViz





New Features in TracePro 2025 25.3

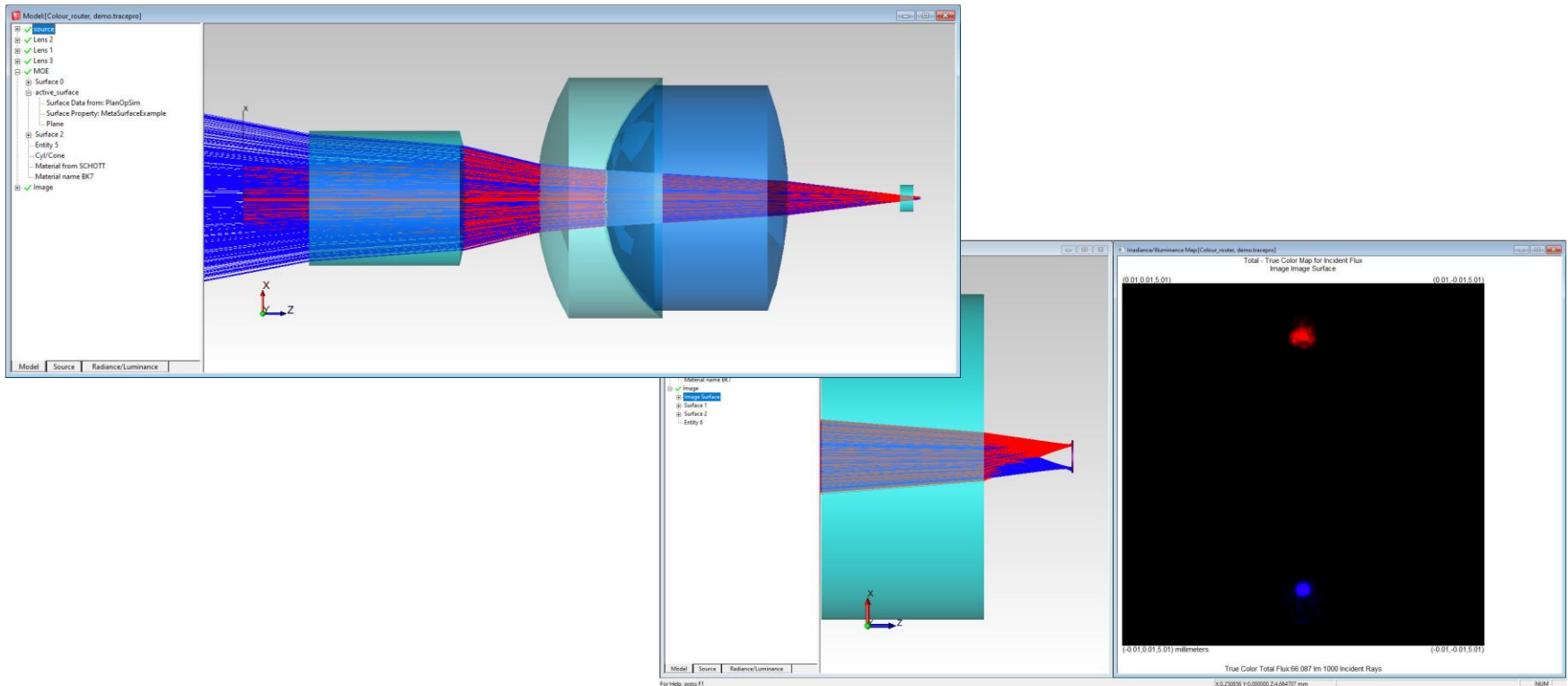
TracePro 2025 25.3

- **TracePro**
 - PlanOpSim Metasurfaces
 - Sequence Editor Updates

TracePro 2025 25.3

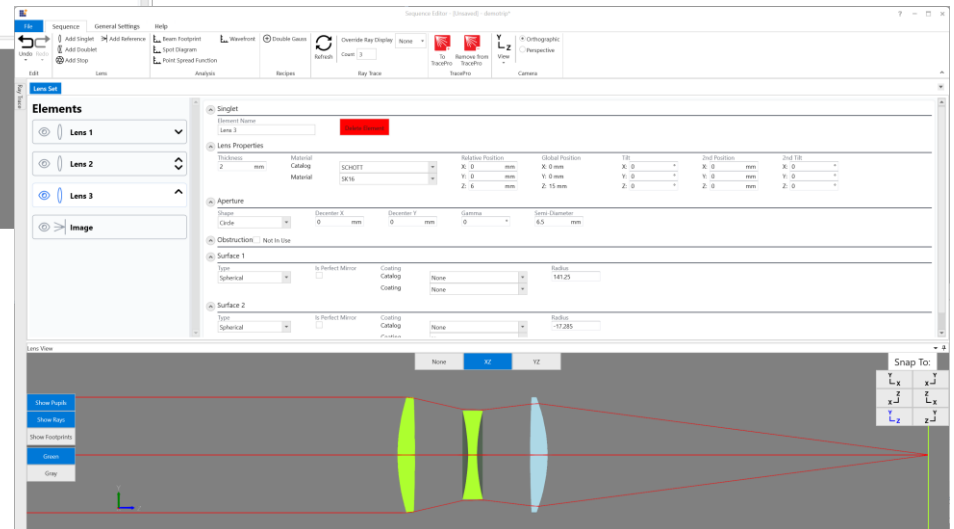
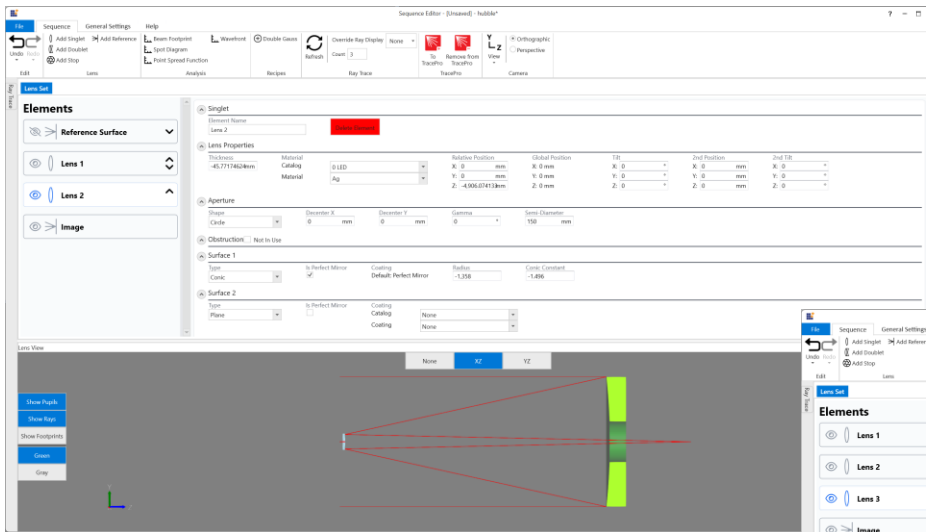
➤ TracePro

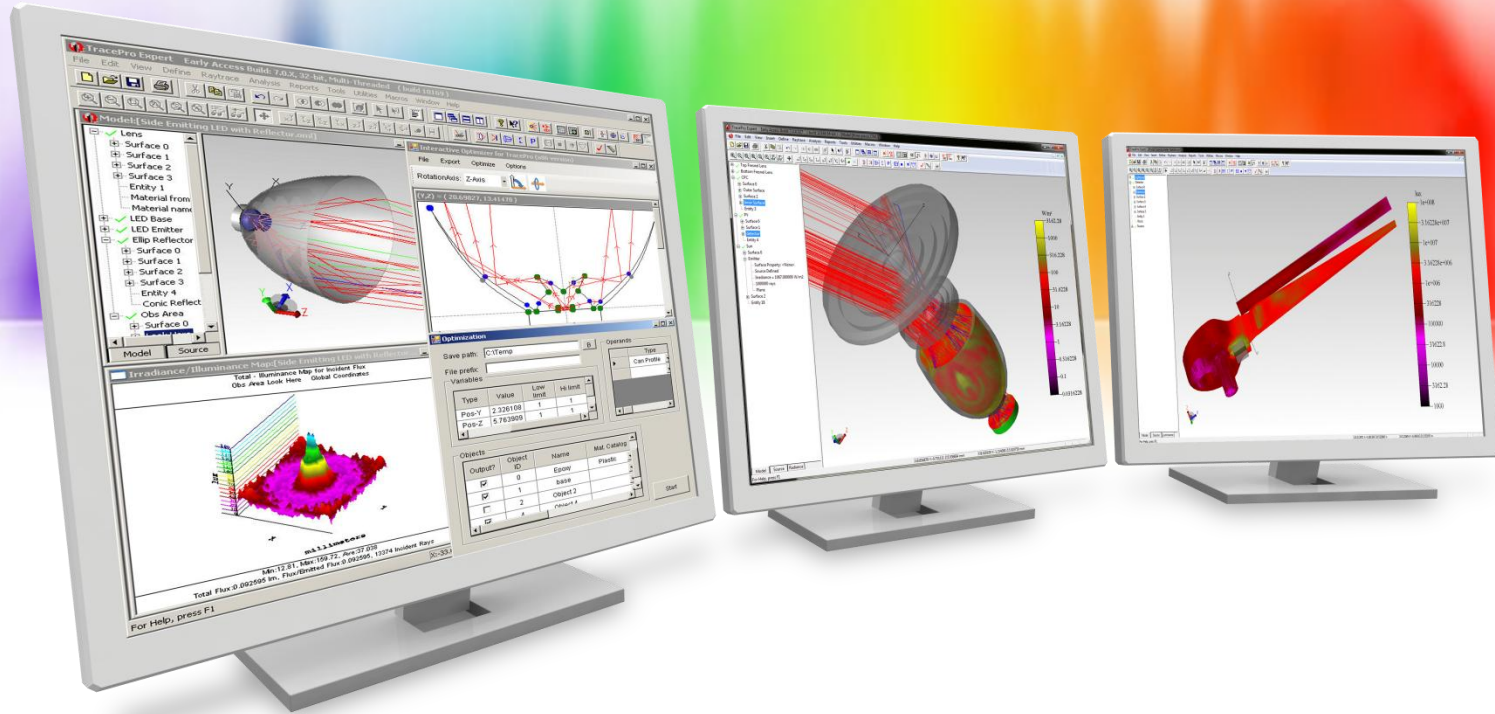
- PlanOpSim Metasurfaces
- TracePro Expert can now be used to simulate metasurfaces generated with PlanOpSim's Meta-Component software



TracePro 2025 25.3

- TracePro
 - Sequence Editor Updates
 - The TracePro Sequence Editor can now open OSLO lens files





New Features in TracePro 2024 24.3

TracePro 2024 24.3

➤ TracePro

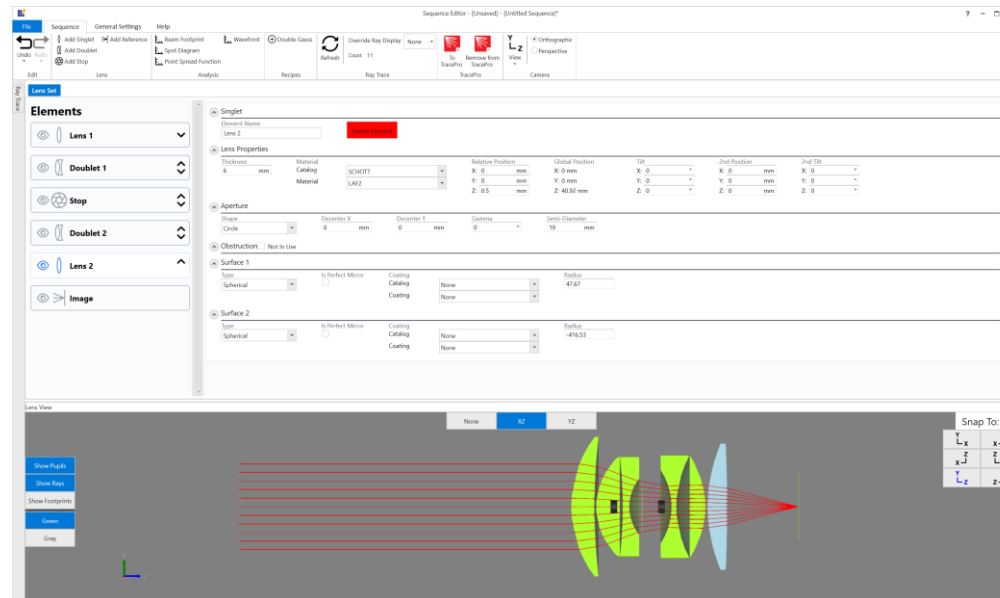
➤ Sequence Editor

➤ Sequential raytracing in TracePro

➤ Located in the Tools menu in TracePro

➤ Available in TracePro Standard and Expert editions

➤ Beam Footprint, Spot Diagram, Point Spread Function, Wavefront



TracePro 2024 24.3

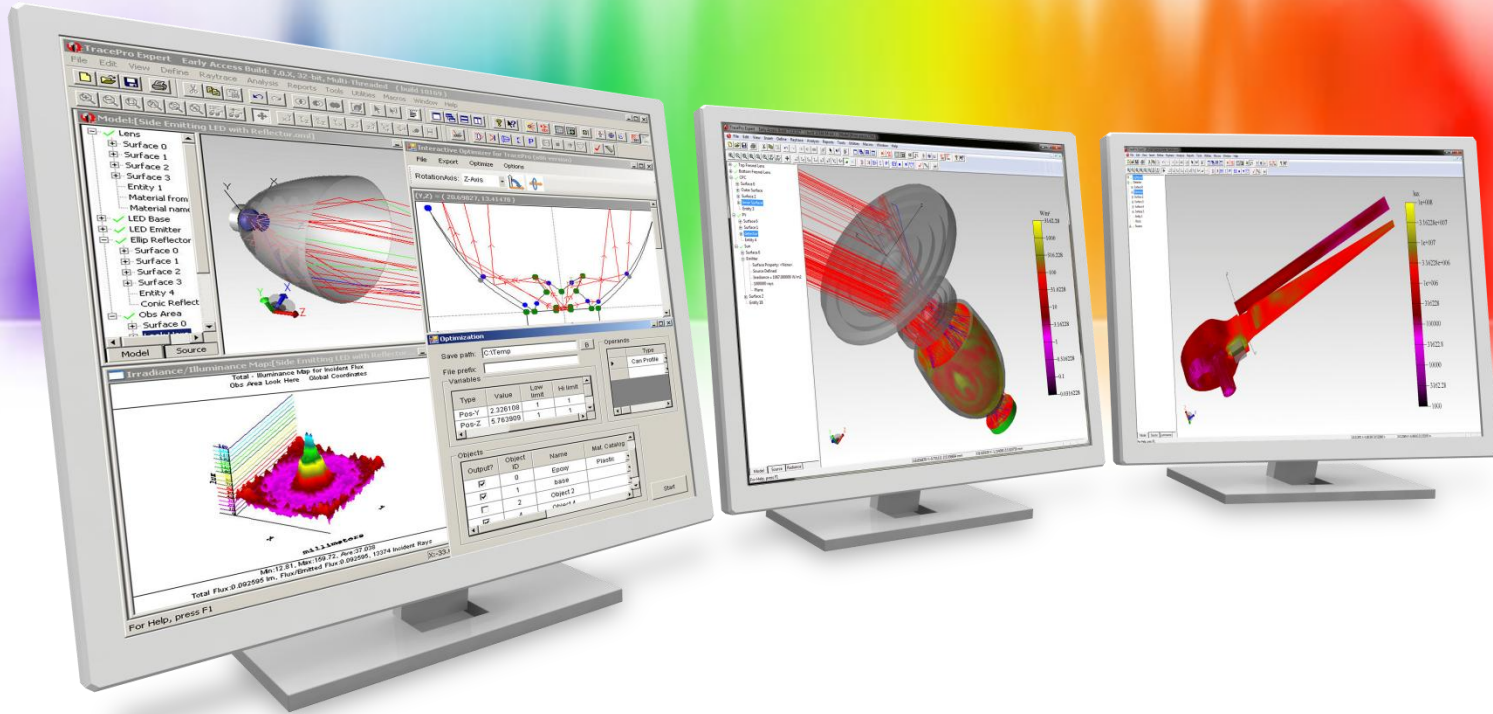
- TracePro
 - Sequence Editor

The screenshot displays the TracePro 2024 24.3 Sequence Editor interface. The main window shows a lens sequence with five elements: Lens 1, Doublet 1, Stop, Doublet 2, and Lens 2. The Doublet 1 and Doublet 2 sections are expanded, showing detailed parameters for their constituent lenses and apertures. For example, Doublet 1 consists of Lens 4 (SCHOTT material, 1.5 mm thickness) and Lens 5 (SCHOTT material, 8.77 mm thickness). The Doublet 2 section shows a 1st Aperture (Circle, 11 mm diameter) and a 1st Obstruction (Not In Use).

Several analysis windows are open:

- Point Spread Function (PSF):** Shows a 3D surface plot of the PSF, a 2D line plot of intensity versus position, and a 2D color map of the PSF. The peak intensity is 10.102818 and the valley (waves) is 8.876381E-05.
- Spot Diagram:** Displays a circular spot diagram with a grid overlay, showing the distribution of light rays in the image plane.
- Wavefront:** Shows a 3D wavefront plot with a color scale from 0.000 to 9.000, indicating wavefront error. The peak (waves) is 10.102818 and the valley (waves) is 8.876381E-05.
- Ray Trace:** Shows a 3D ray trace of the lens system, with red lines representing the light rays passing through the lenses and converging to a focal point.

The interface includes a menu bar (File, Sequence, General Settings, Help), a toolbar with various analysis and editing tools, and a status bar at the bottom right with a 'Snap To' dropdown menu.

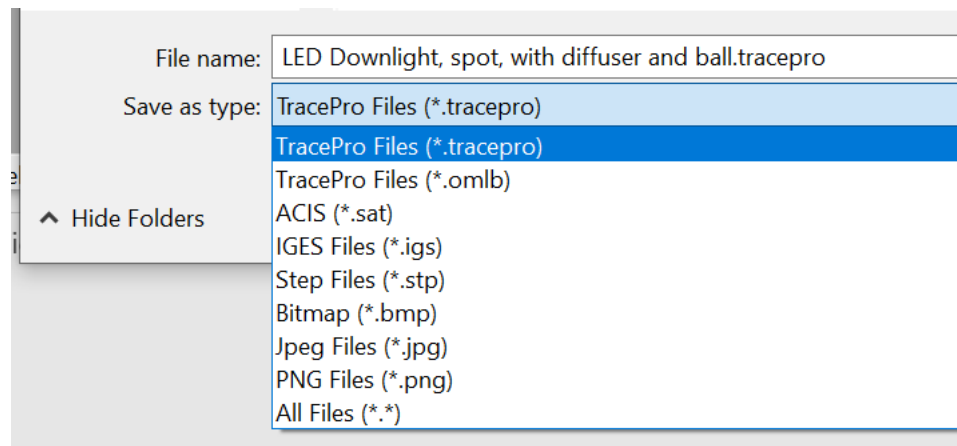


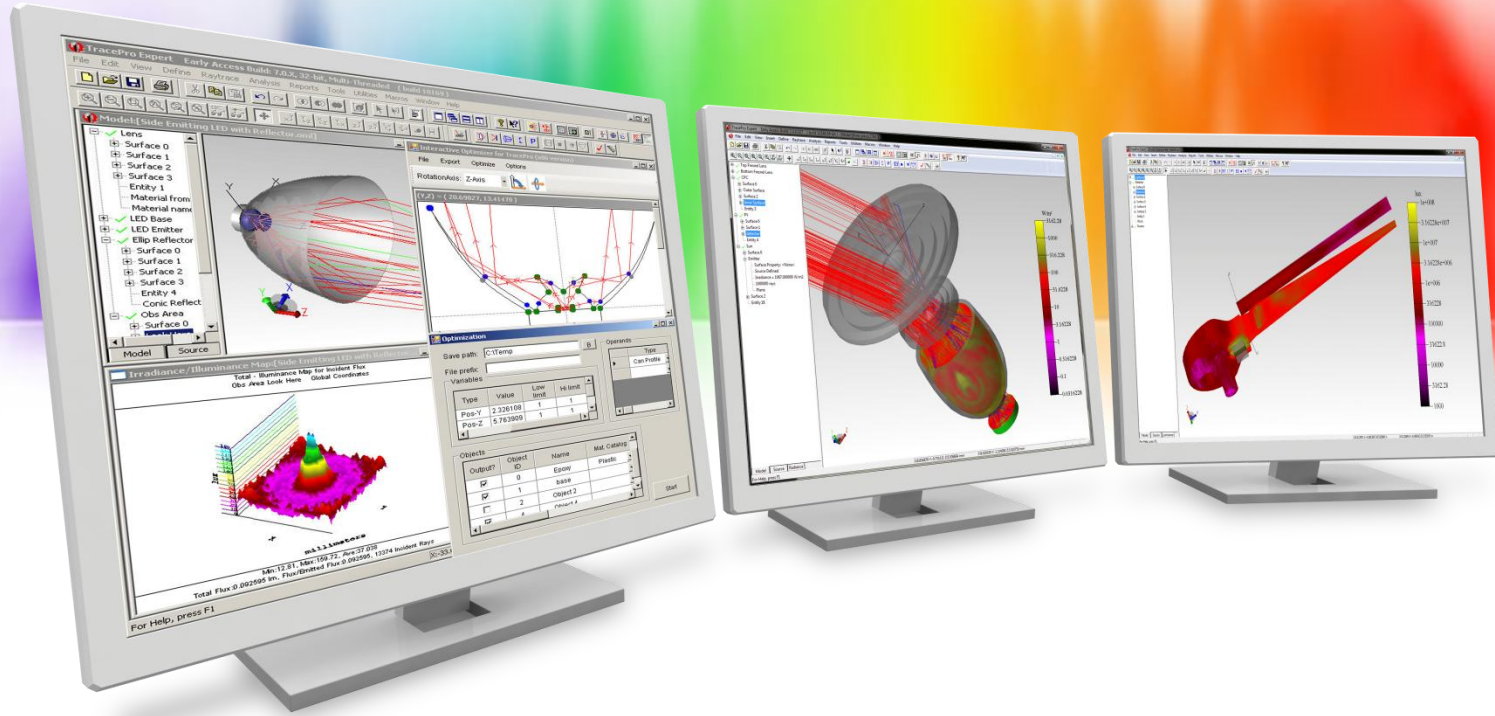
New Features in TracePro 2024 24.2

TracePro 2024 24.2

➤ TracePro

- New .tracepro file format
 - Additional information is now saved with the TracePro model, including:
 - .omlb data
 - Property data, including default and custom properties
 - Sequence data for sequential ray tracing
 - Rays
- The .omlb file format is still available



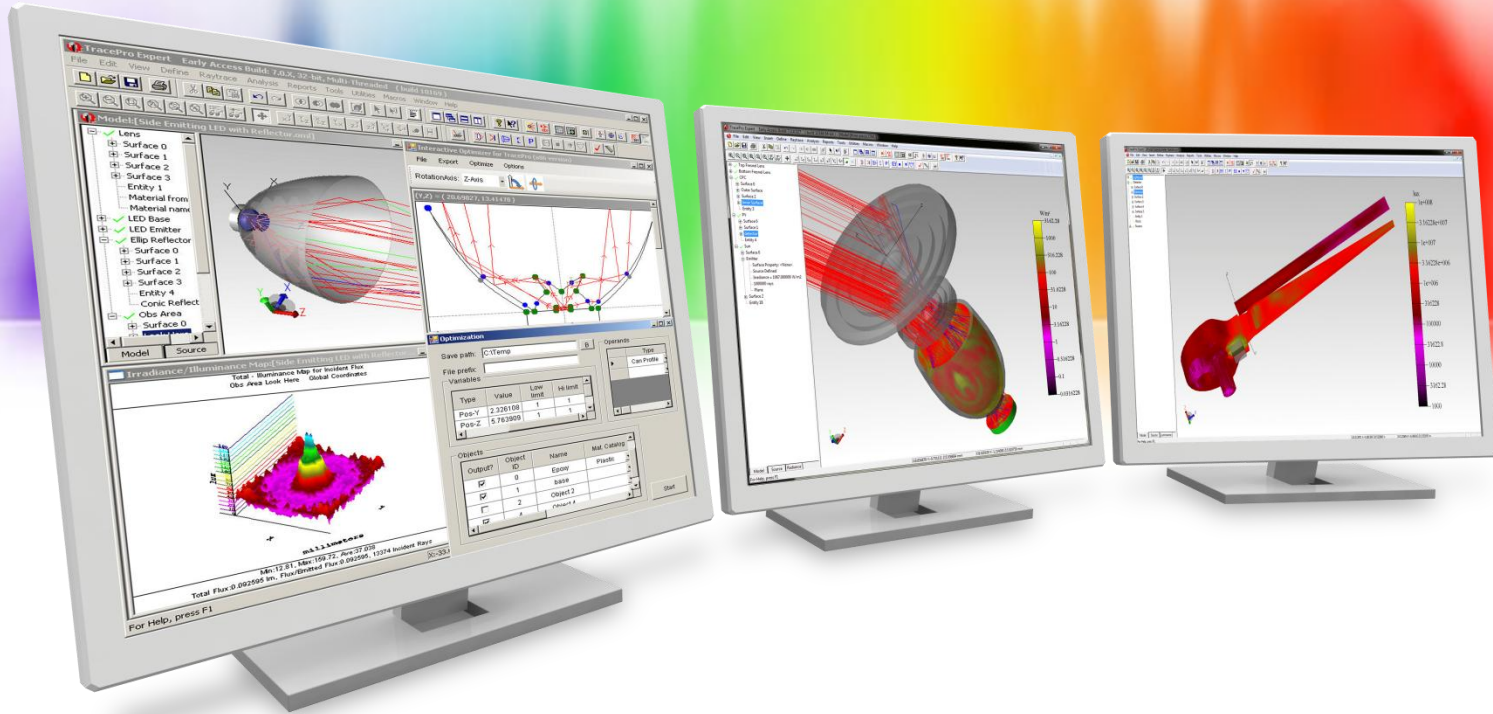


New Features in TracePro 2024 24.1

TracePro 2024 24.1

➤ TracePro

- New and updated Material Property catalogs
 - Schott
 - OHARA
 - Hoya
 - Hikari (Nikon)
 - CDGM
 - Sumita
 - Vitron
 - Umicore
 - Nikon



New Features in TracePro 2023 23.5

TracePro 2023 23.5

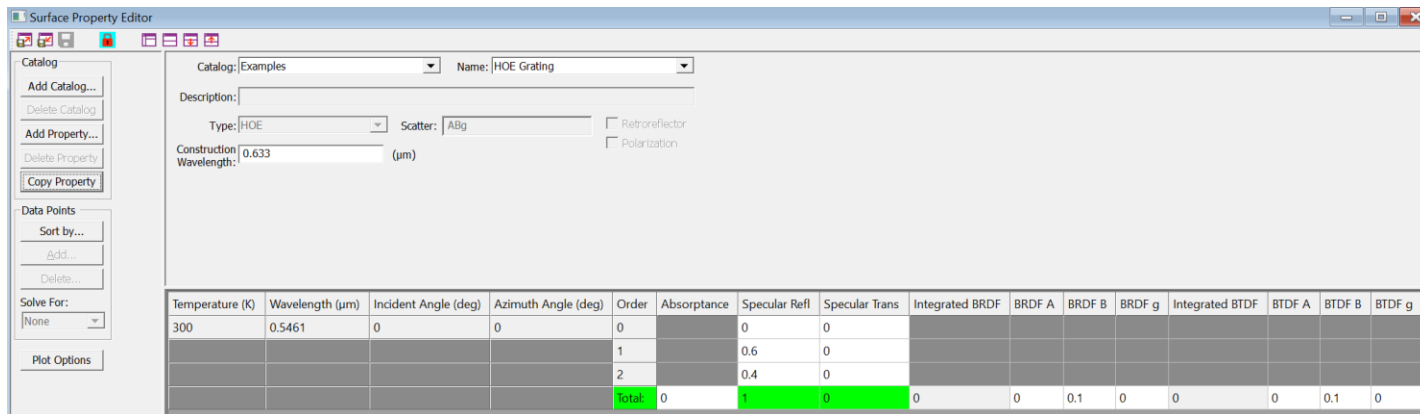
➤ TracePro

- Diffractive Optical Element capability
- Updated Stray Light Analyzer

TracePro 2023 23.5

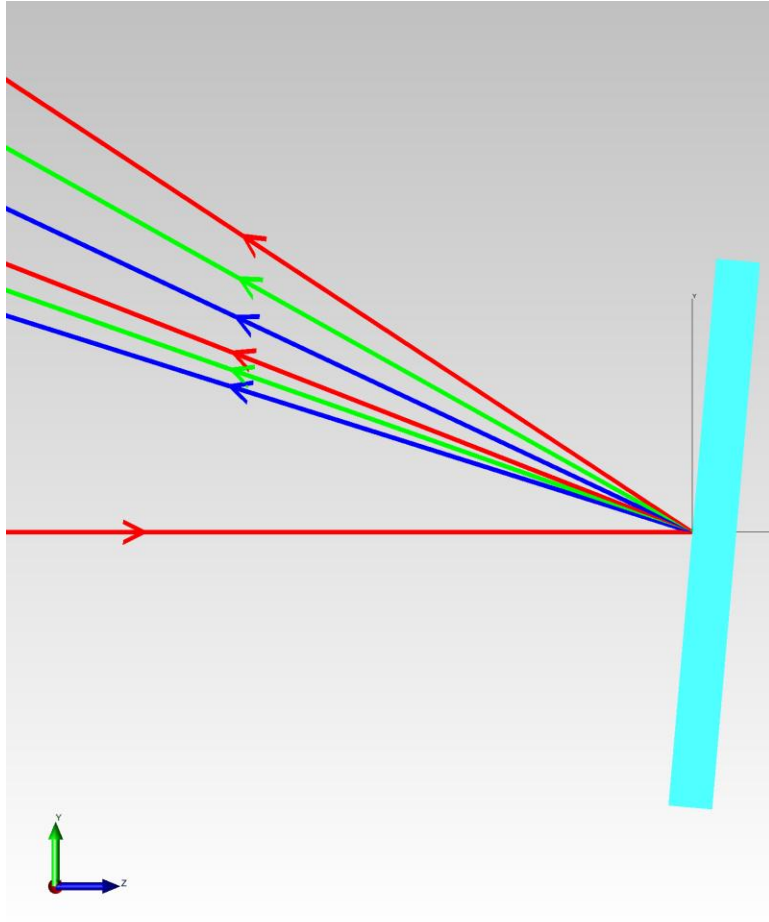
➤ TracePro Standard and Expert

- TracePro can now model 3 different types of Diffractive Optical Elements
 - Holographic Optical Elements (HOEs)
 - Computer Generated Holograms (CGHs)
 - Zernike Phase
- CGH surfaces can be:
 - Radially symmetric
 - Asymmetric x-y
 - Asymmetric (absolute value)

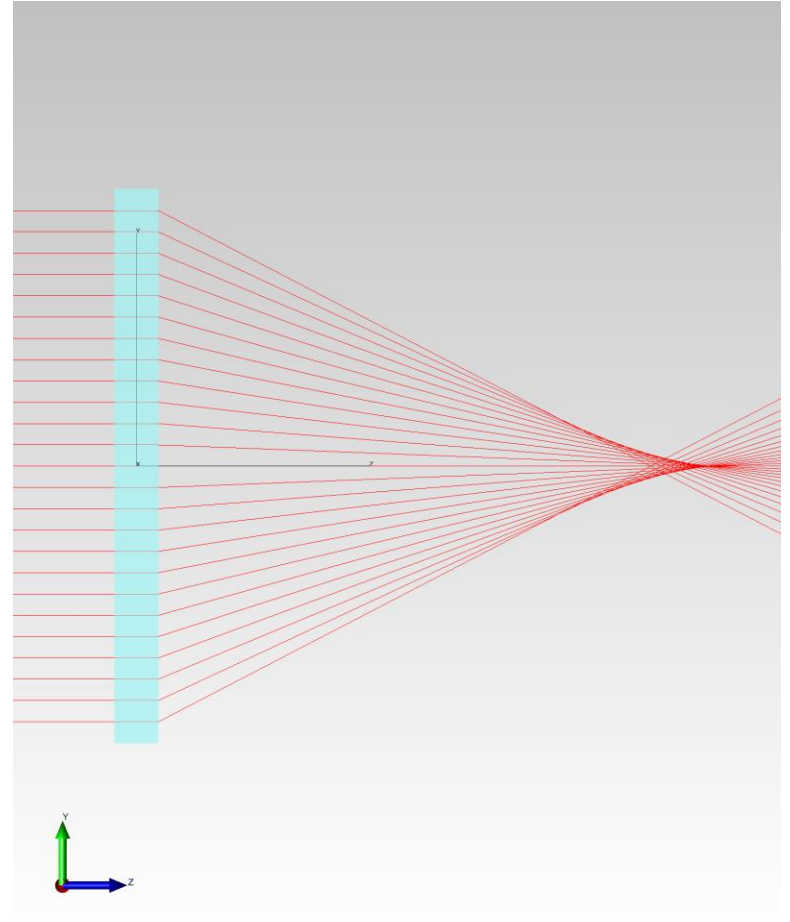


Surface Property Editor showing HOE surface for a reflection grating

TracePro 2023 23.5



HOE reflection grating in TracePro

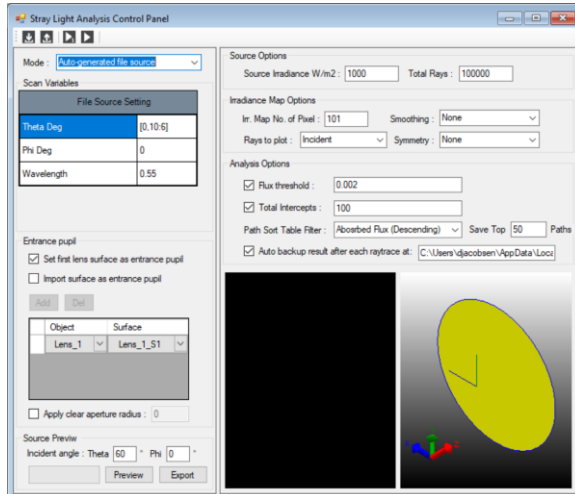
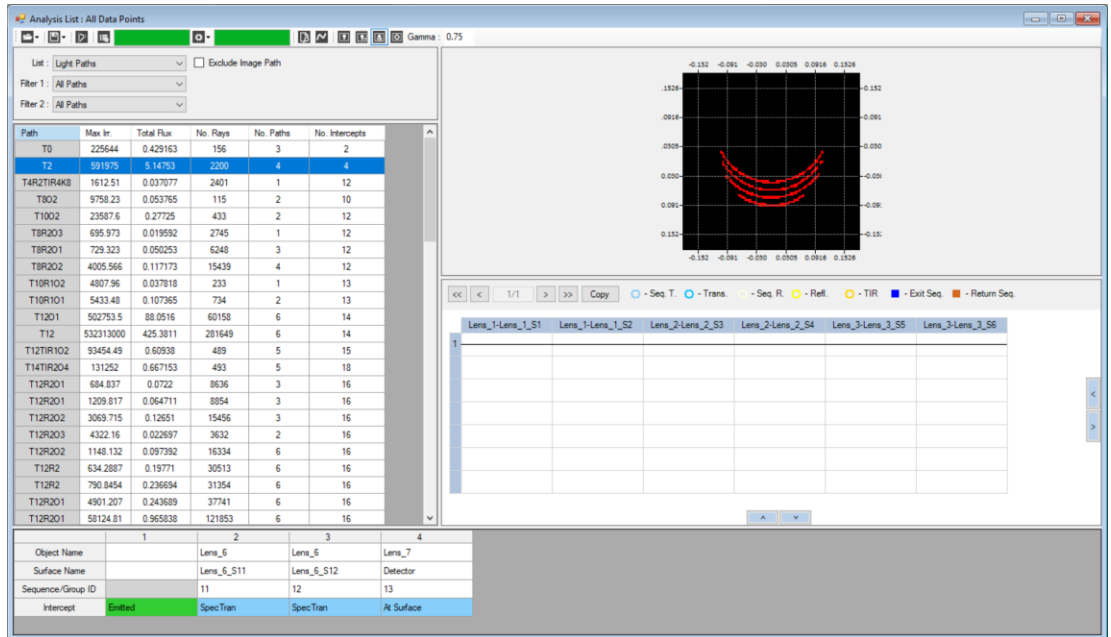
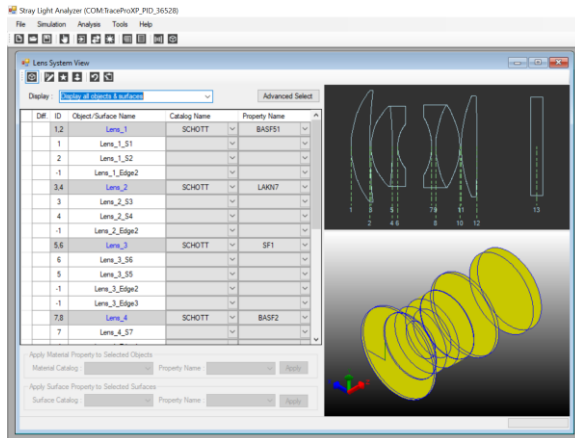


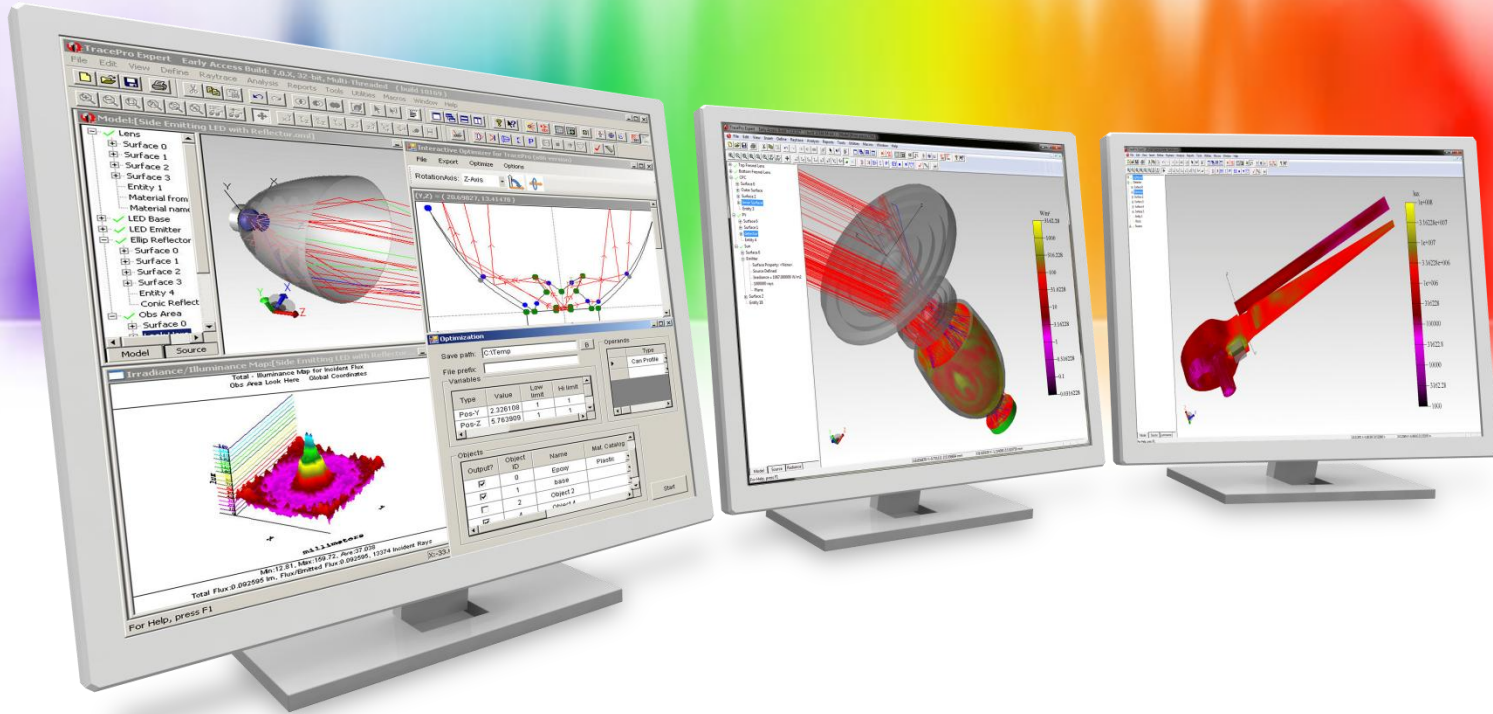
CGH lens example in TracePro

TracePro 2023 23.5

➤ TracePro Standard and Expert

➤ The Stray Light Analyzer has been updated with added functionality



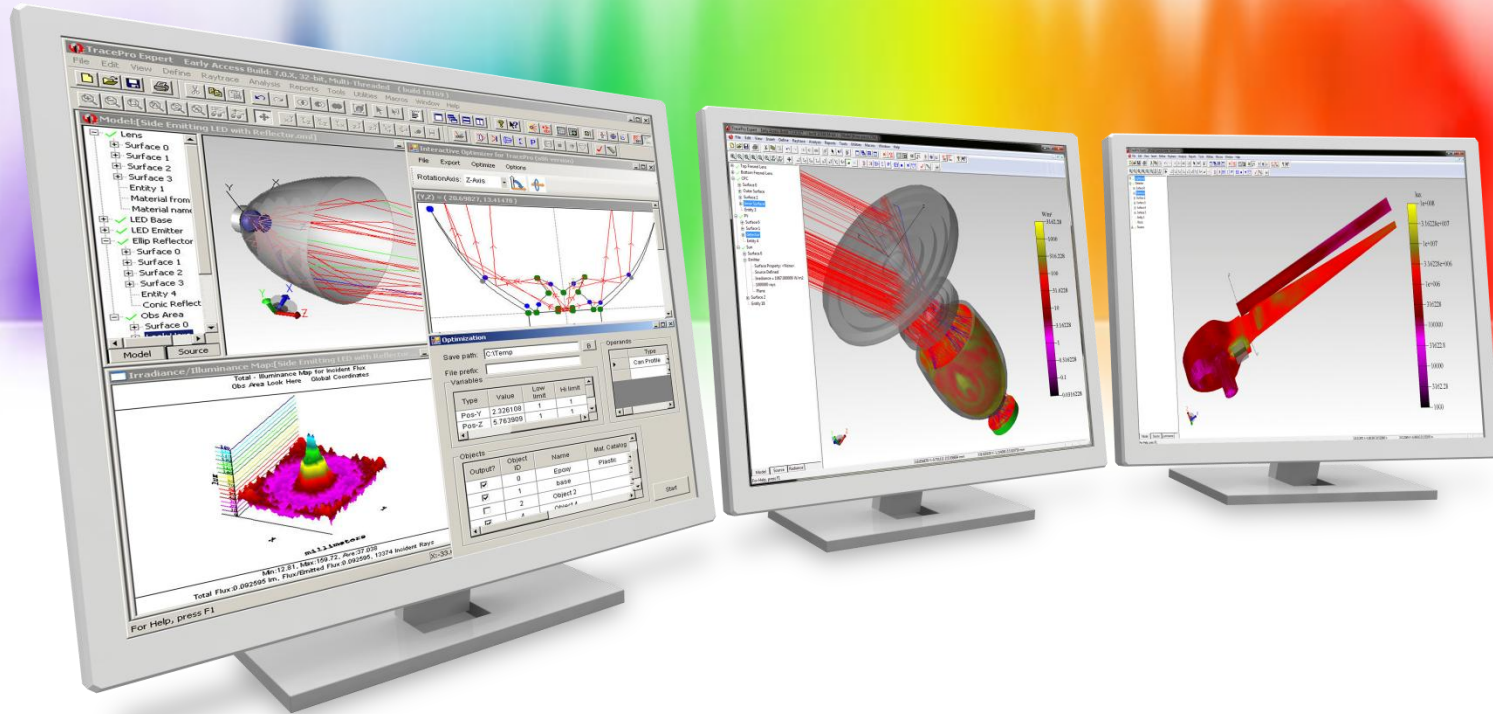


New Features in TracePro 2023 23.2

TracePro 2023 23.2

➤ TracePro

- Improved ray trace performance
- Increased Scheme processing stack size for complex Scheme programs
- New macro commands
 - Vector3d:cross
 - Vector3d:dot
 - Vector3d:normalize

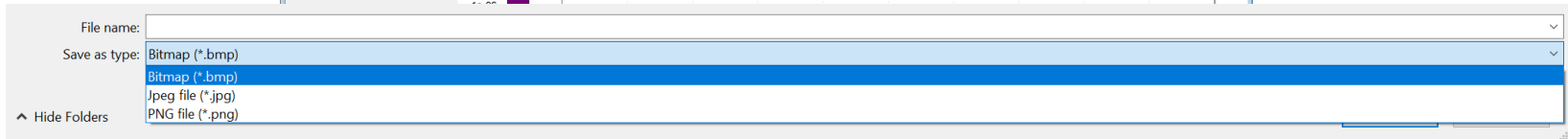
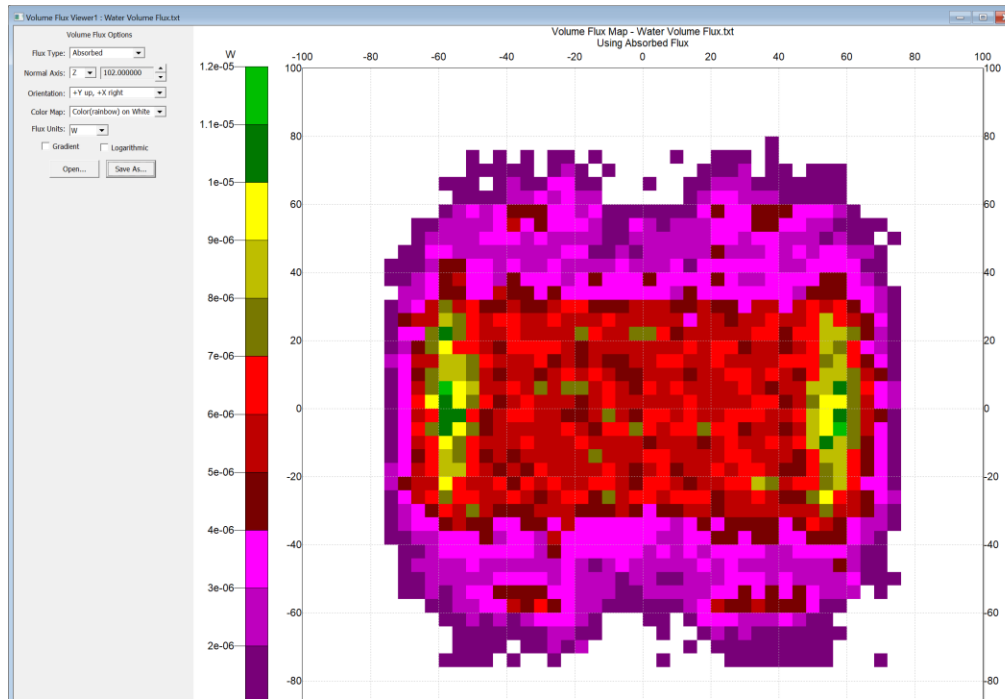


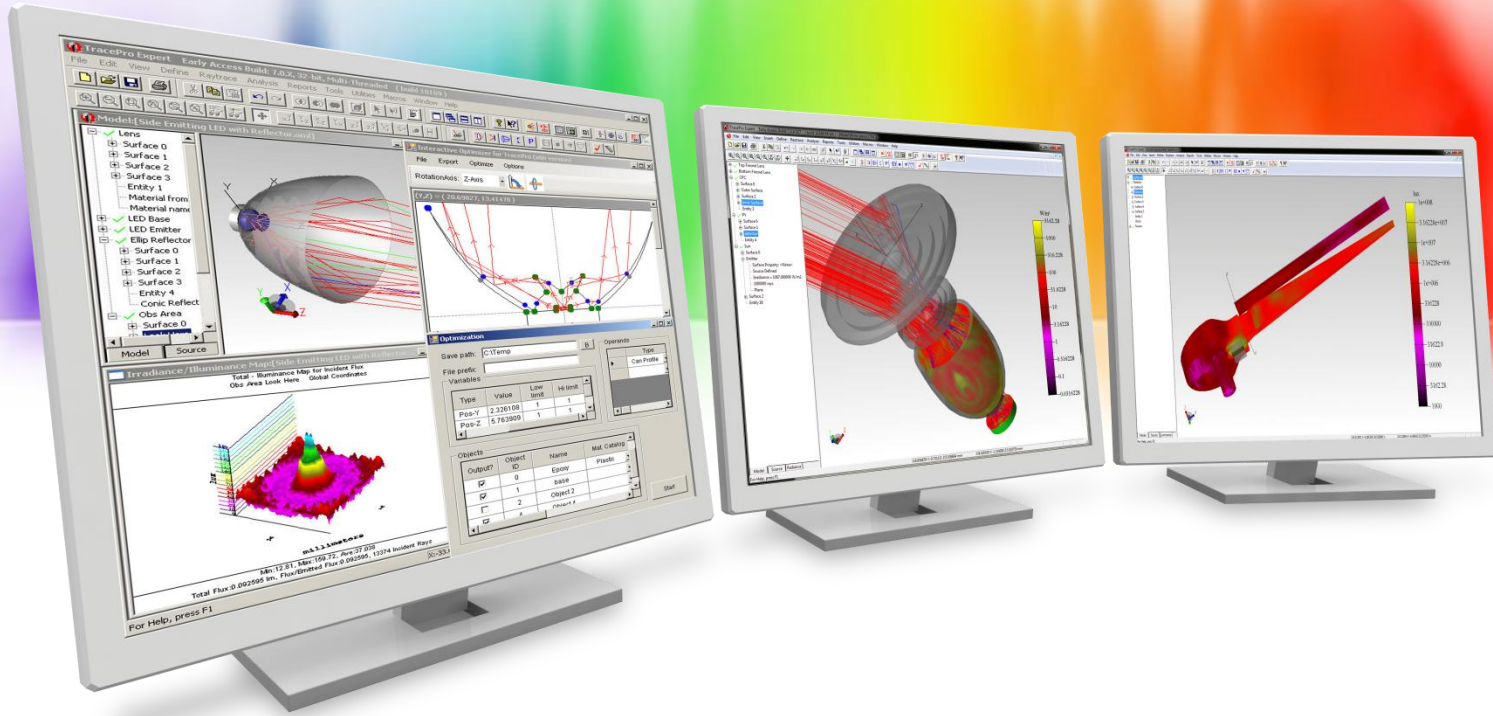
New Features in TracePro 2023 23.1

TracePro 2023 23.1

➤ TracePro

- Added ability to save image files (jpg, bmp,wmf) to Volume Flux Viewer

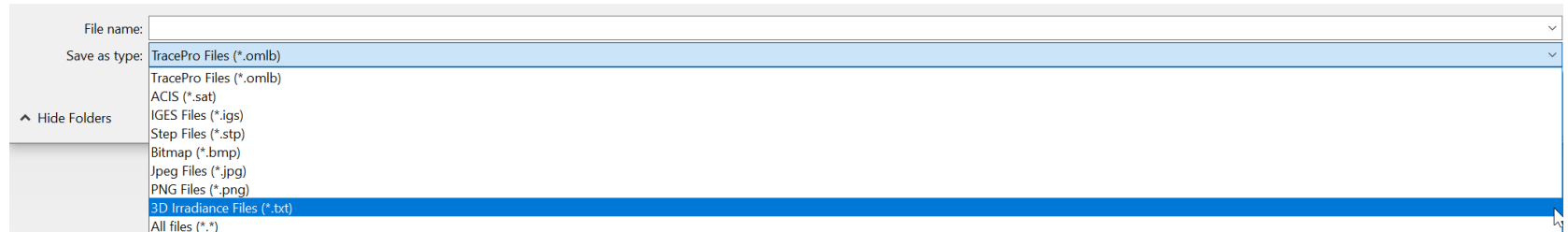
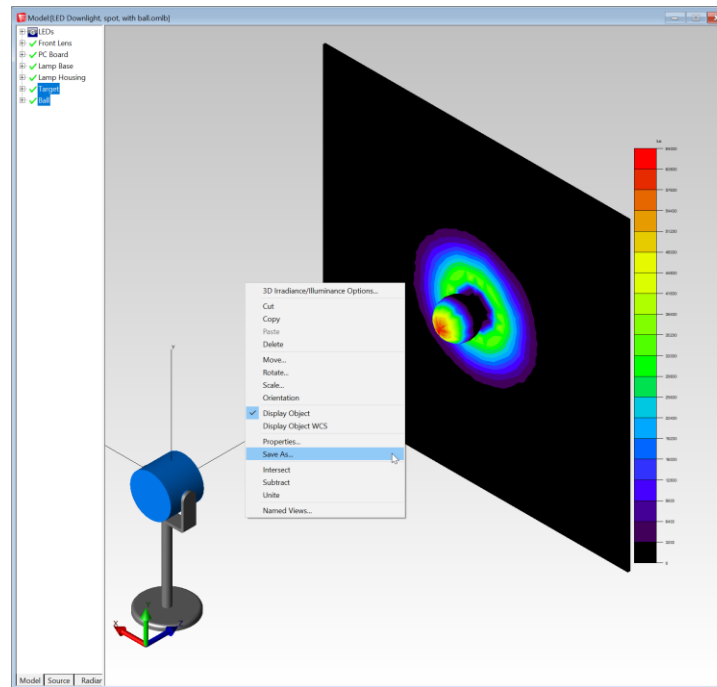




New Features in TracePro 2022 22.6

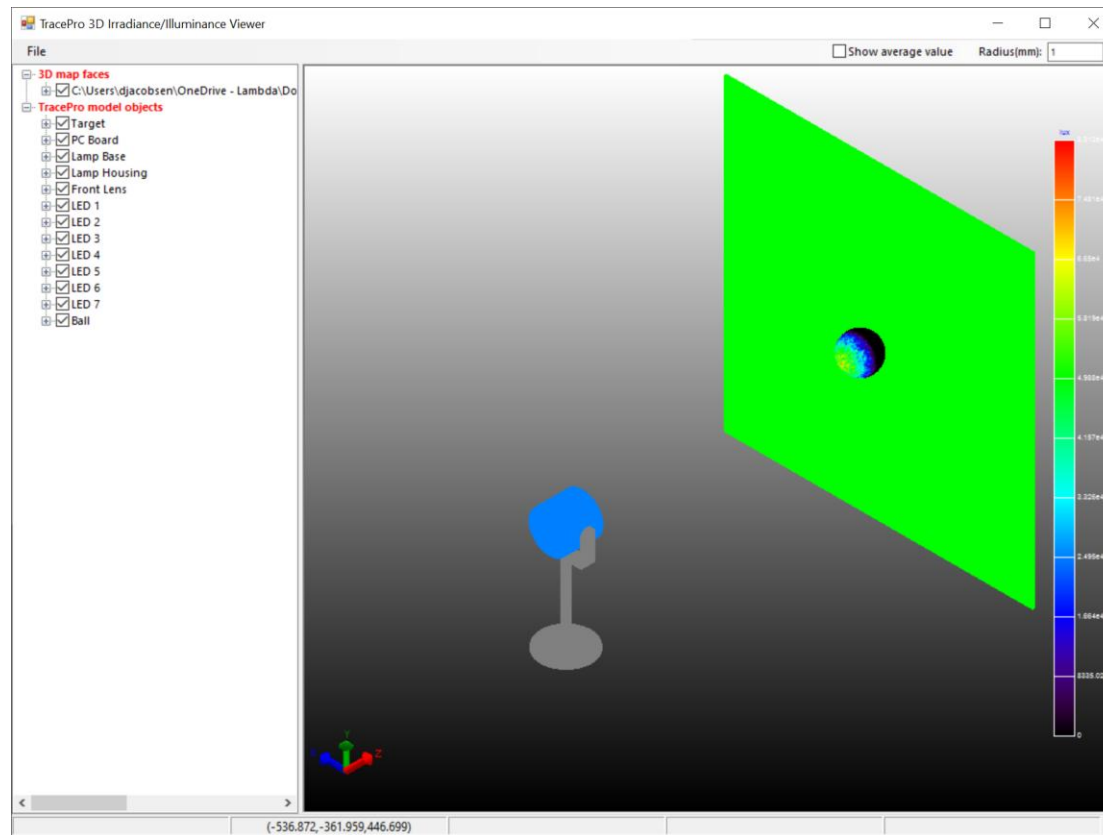
TracePro 2022 22.6

➤ New capability to save 3D Irradiance/Illuminance Map



TracePro 2022 22.6

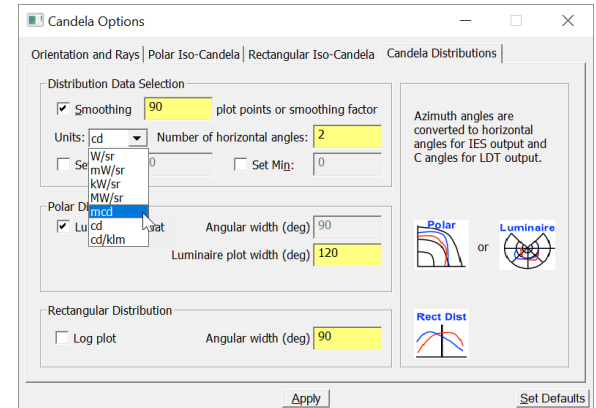
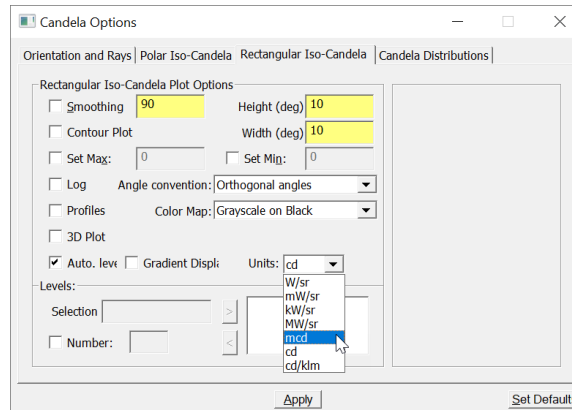
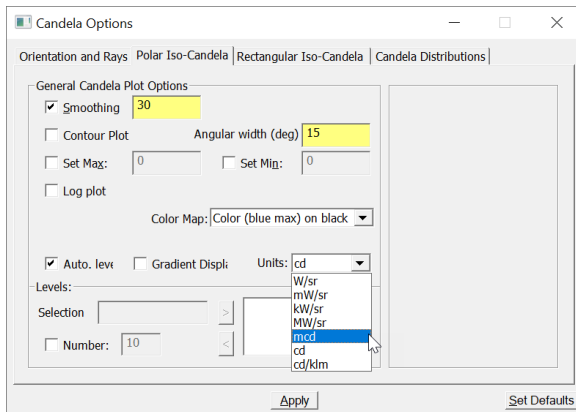
➤ New 3D Irradiance/Illuminance Viewer in Tools menu

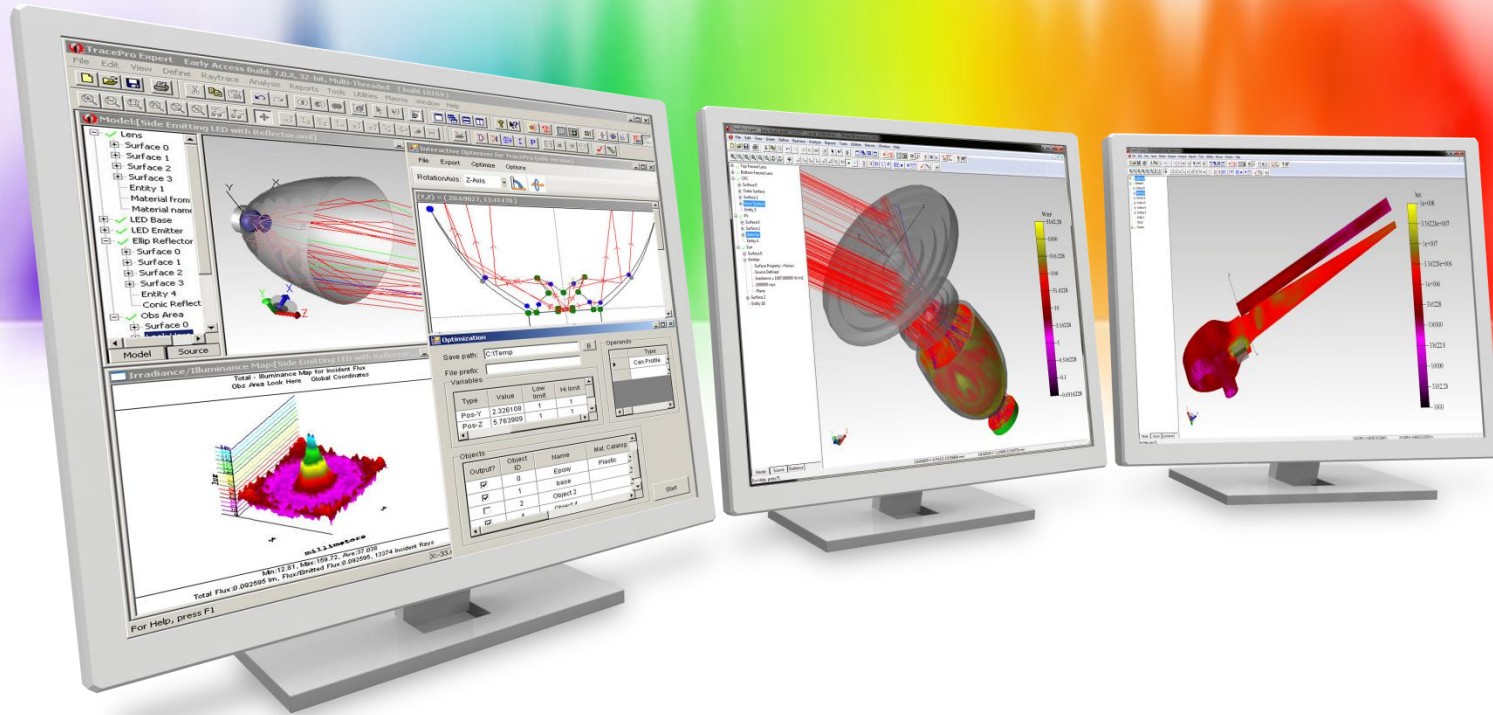


TracePro 2022 22.6

➤ TracePro

➤ Added mcd (millicandela) unit option to Candela Plots





New Features in TracePro 2022 22.5

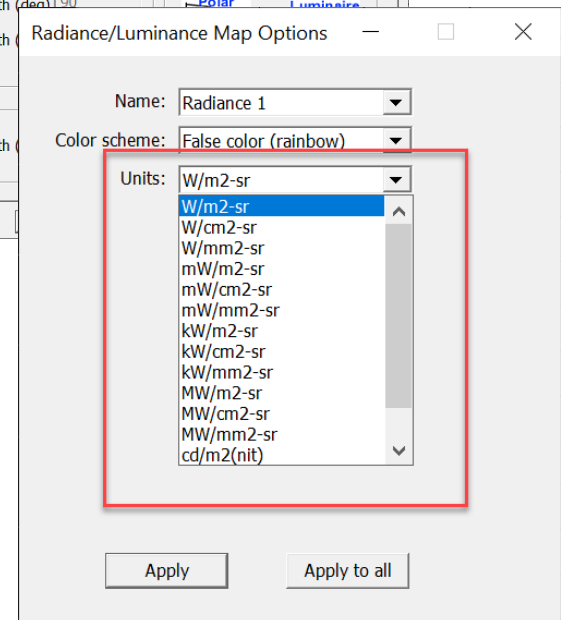
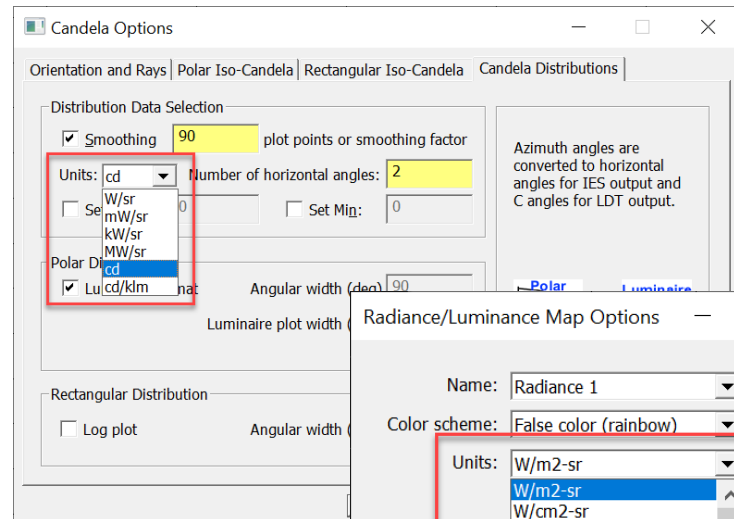
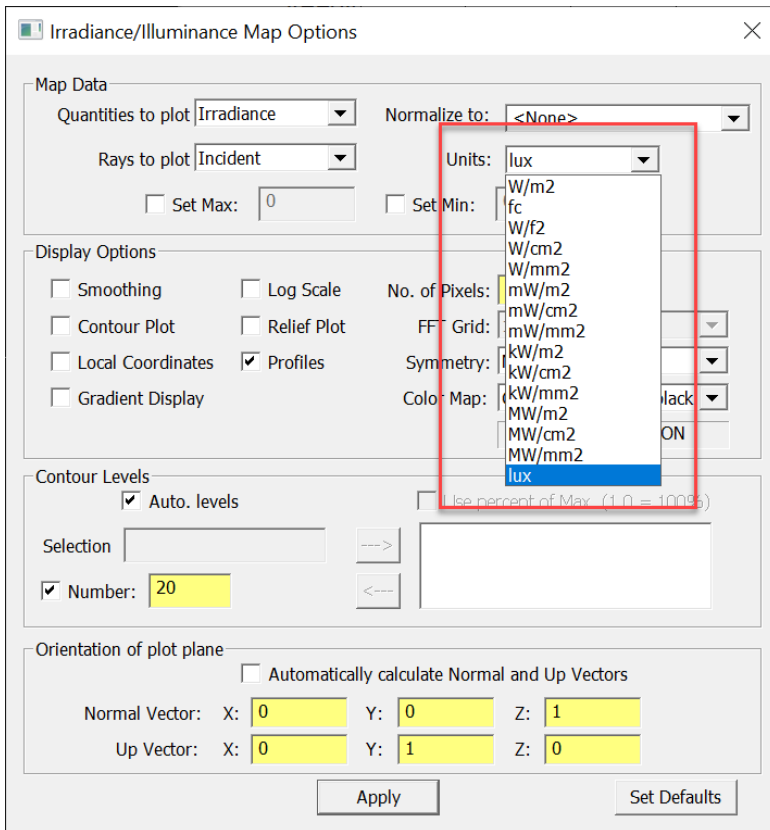
TracePro 2022 22.5

➤ TracePro

- New analysis tools unit options
- Set Defaults capability added to Ray Sorting
- New RepTile geometry – tetrahedron
- Ray Sorting added to 3D Irradiance/Illuminance Map
- New capability to import multi-configuration OSLO and Zemax files
- New ability to select one or more paths and display them in the Candela Plot

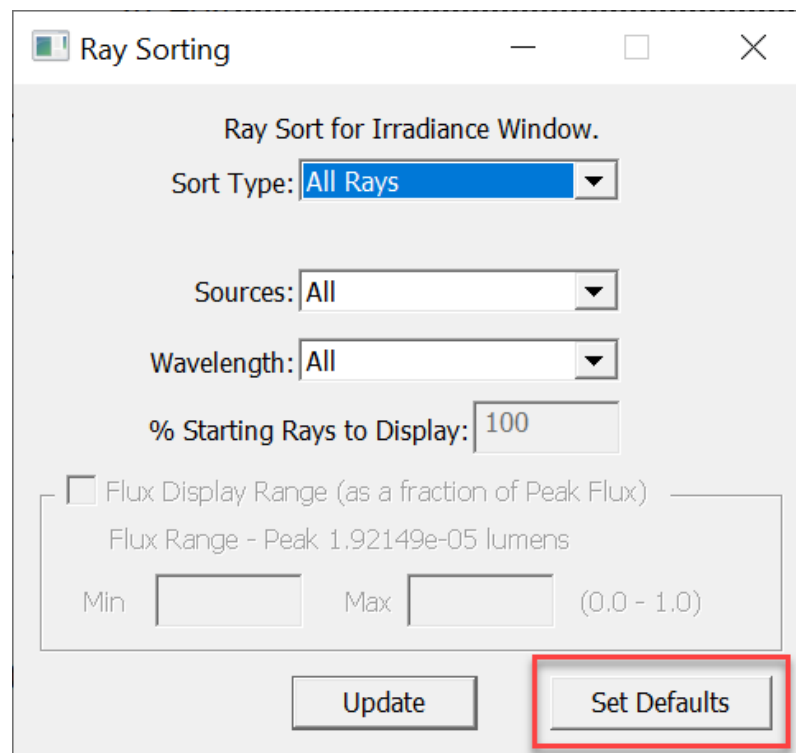
TracePro 2022 22.5

TracePro – New unit options have been added to the analysis tools. Also, the units are now set in the appropriate Options dialog boxes.



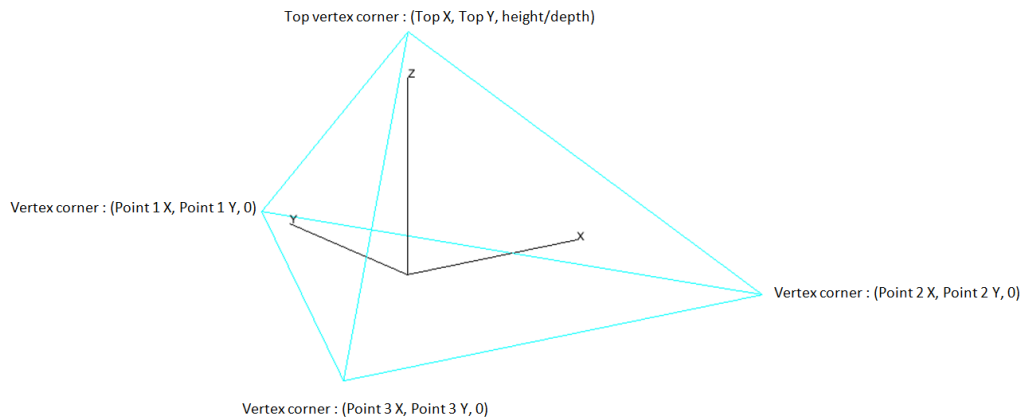
TracePro 2022 22.5

TracePro – Ray Sorting now has a Set Defaults option to allow users to save commonly used settings as the default values



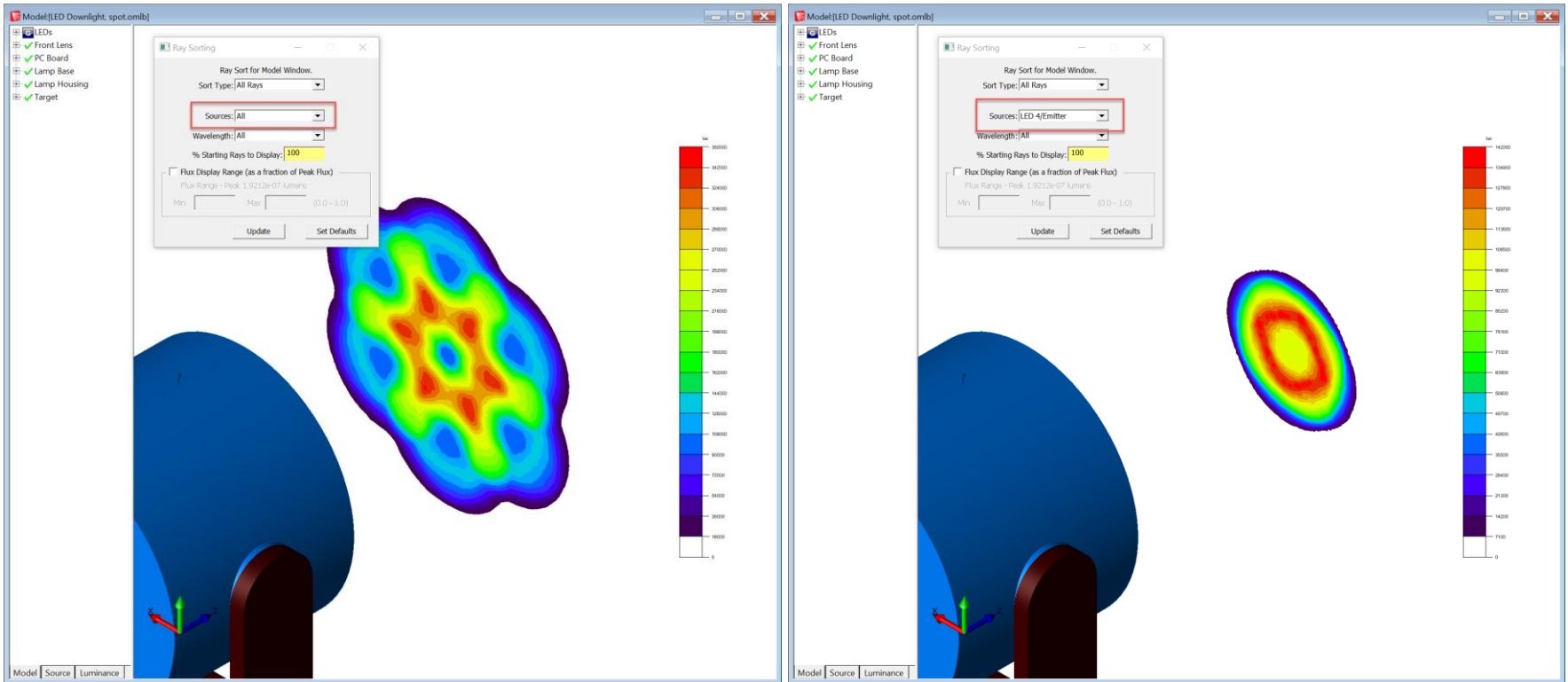
TracePro 2022 22.5

TracePro – A new RepTile geometry type, Tetrahedron, has been added



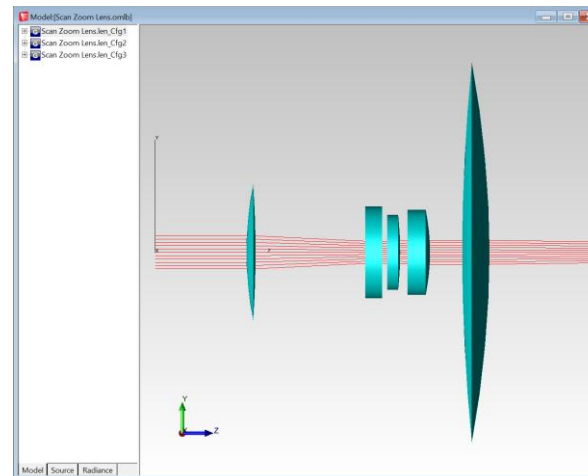
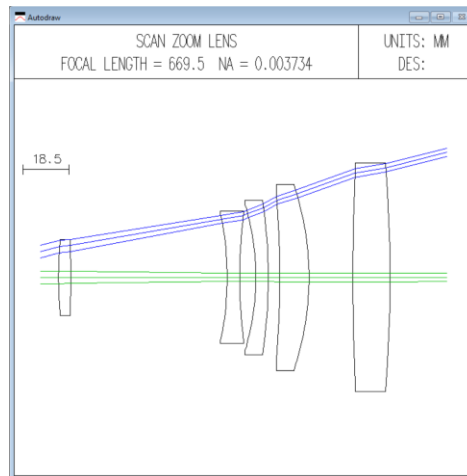
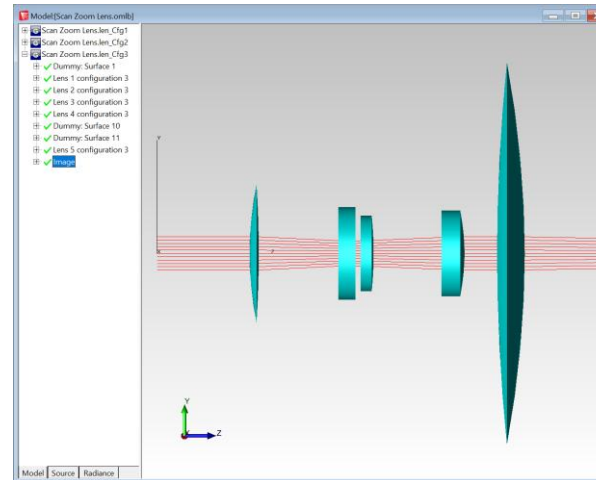
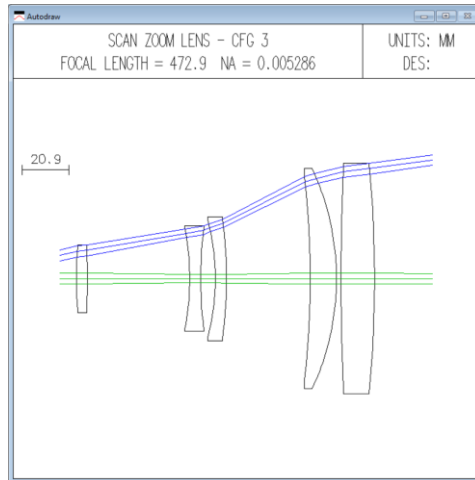
TracePro 2022 22.5

TracePro – Ray Sorting can now be used with the 3D Irradiance/Illuminance Map



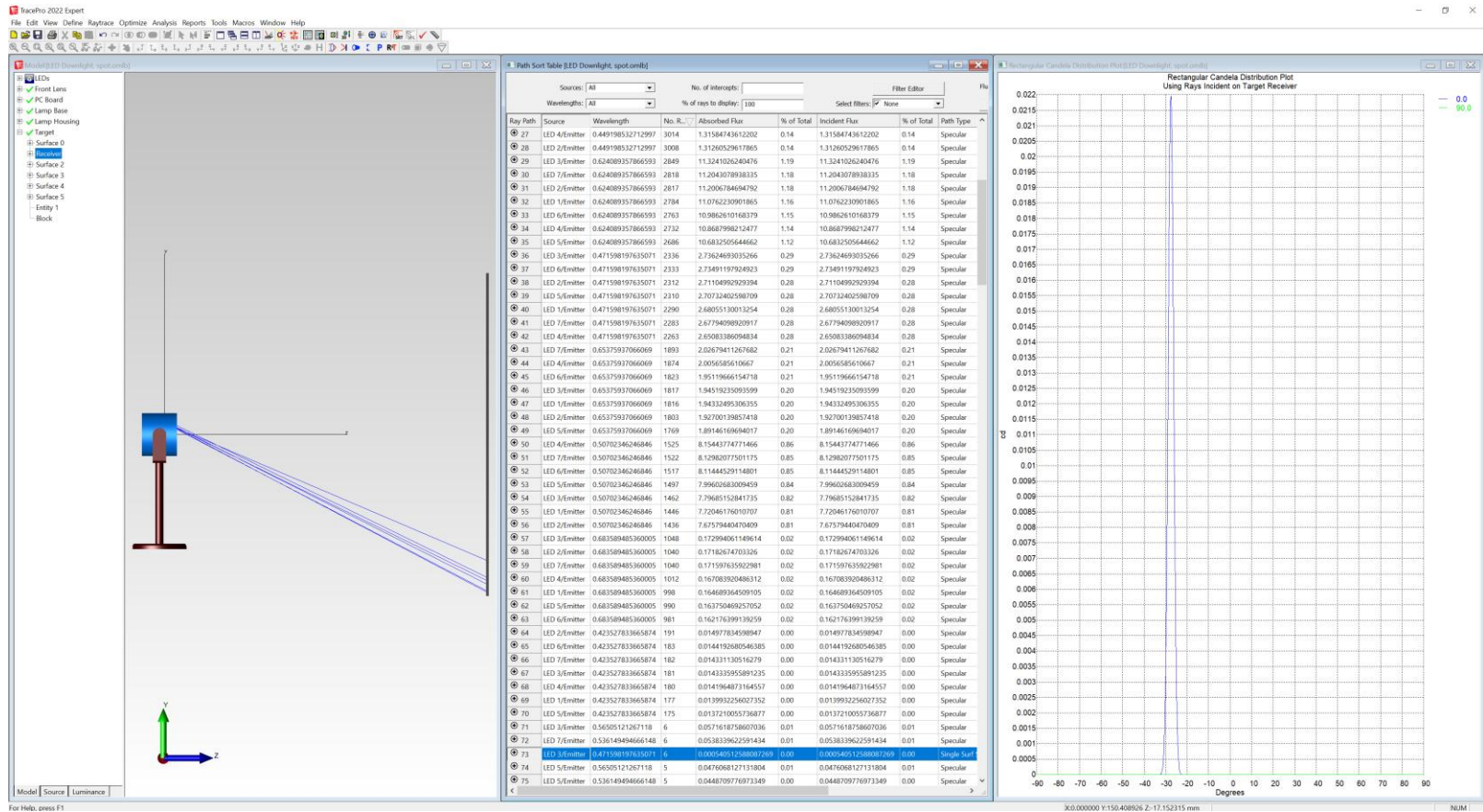
TracePro 2022 22.5

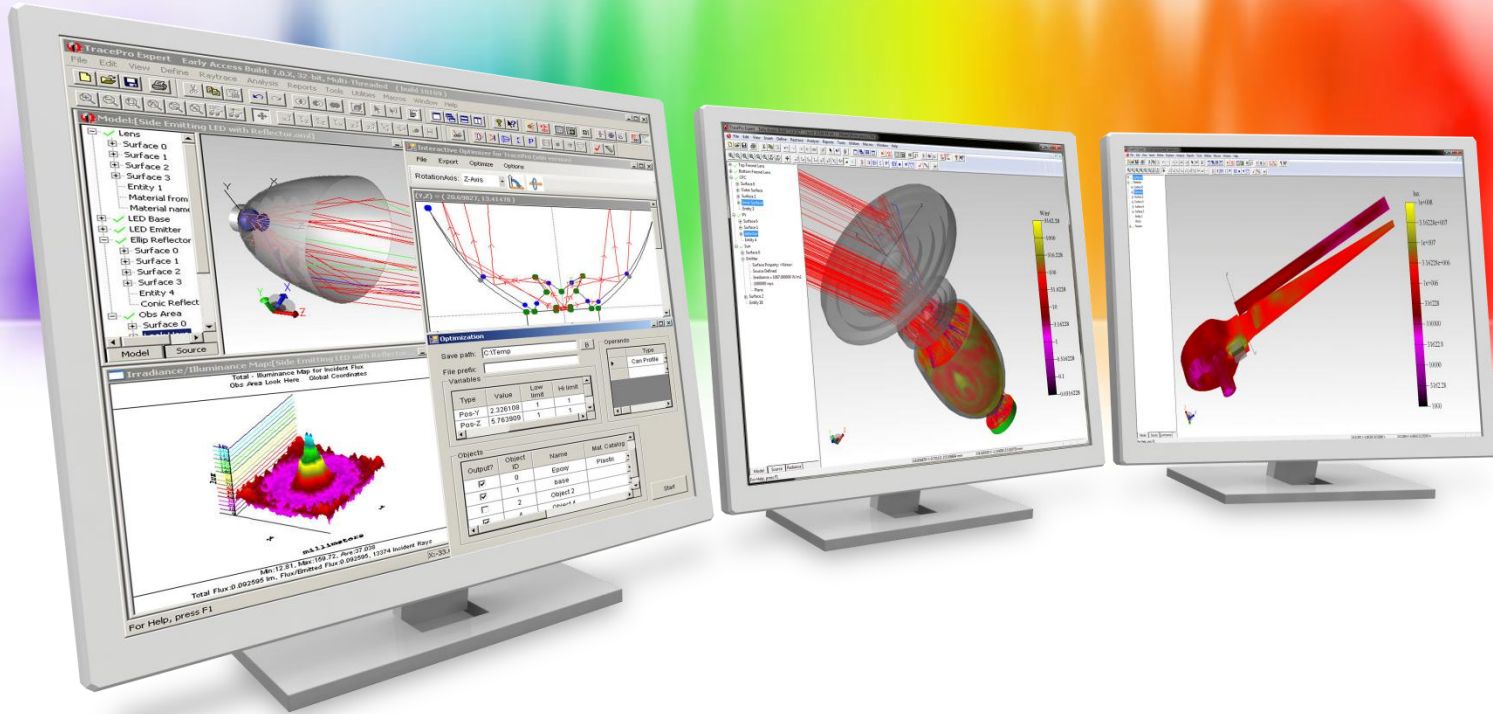
TracePro – TracePro can now import multi-configuration files from OSLO and Zemax



TracePro 2022 22.5

TracePro – Path Sorting can now be used with the Candela Plots in TracePro





New Features in TracePro 2022 22.2

TracePro 2022 22.2

➤ **TracePro**

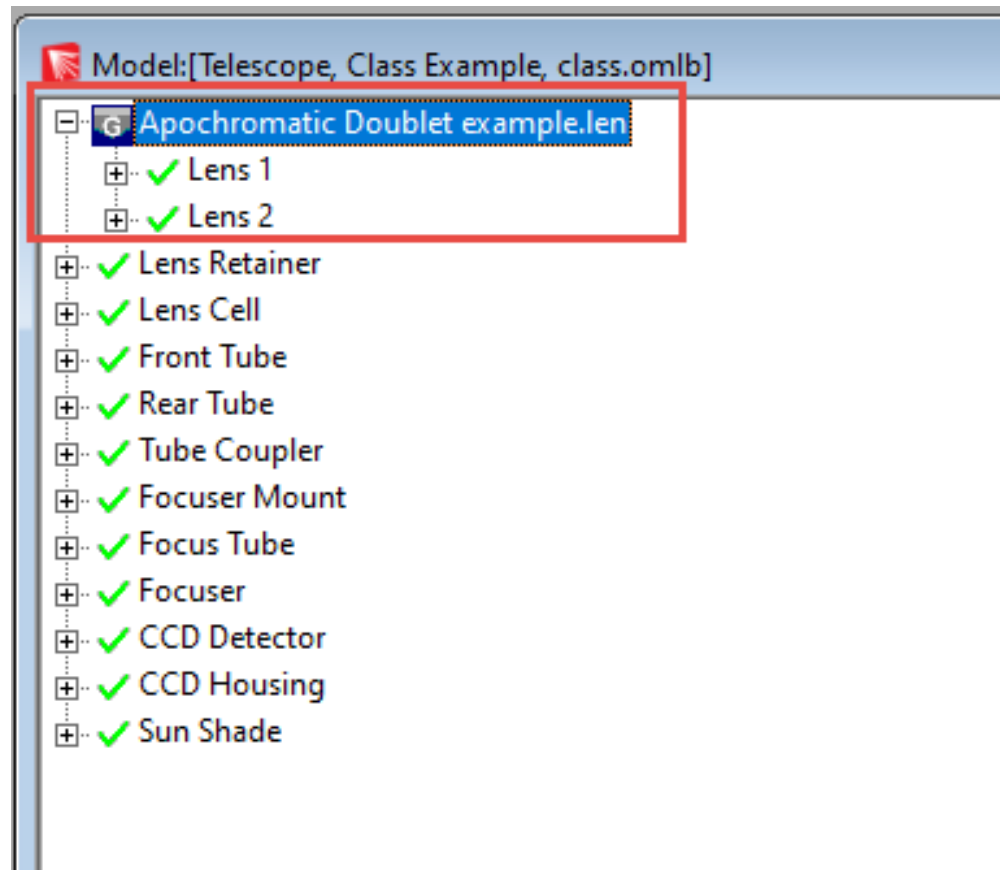
- Group for imported lenses

➤ **Light Source Builder**

- Convert Lucidshape and Zemax rayfiles to TracePro rayfile format

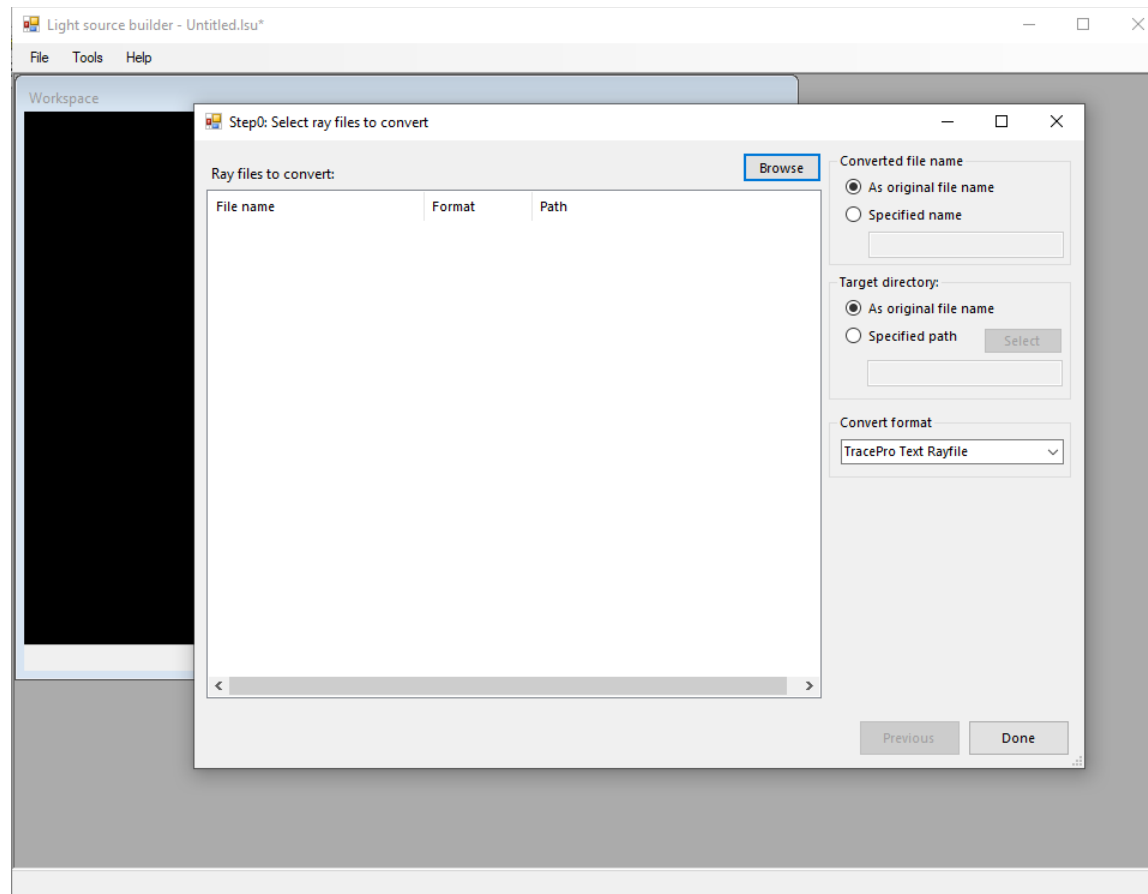
TracePro 2022 22.2

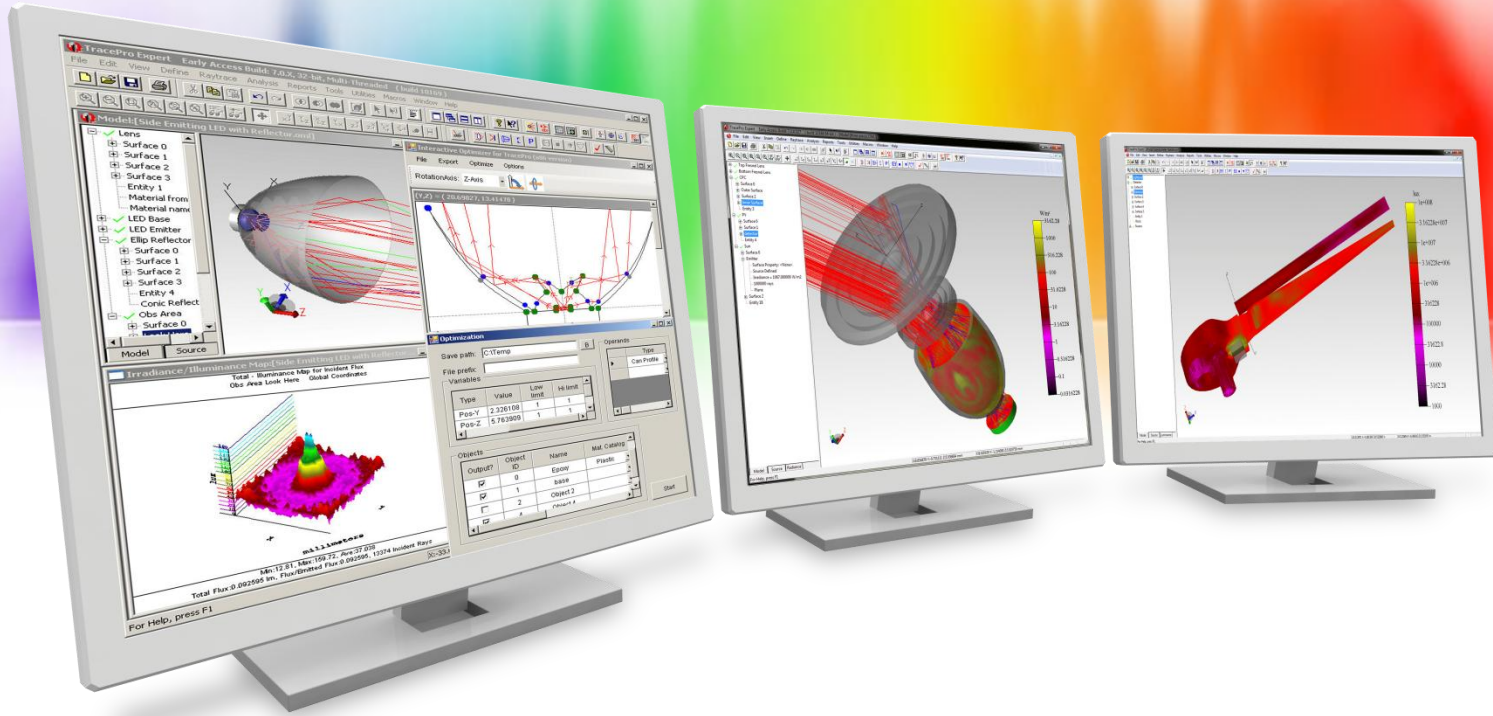
TracePro – Imported lenses are now placed in a new group in TracePro. The name of the lens file will be the name of the group in TracePro.



TracePro 2022 22.2

Light Source Builder – New ability to convert LightTools, Lucidshape, and Zemax rayfiles to a TracePro rayfile format





New Features in TracePro 2022 22.1

TracePro 2022 22.1

➤ TracePro

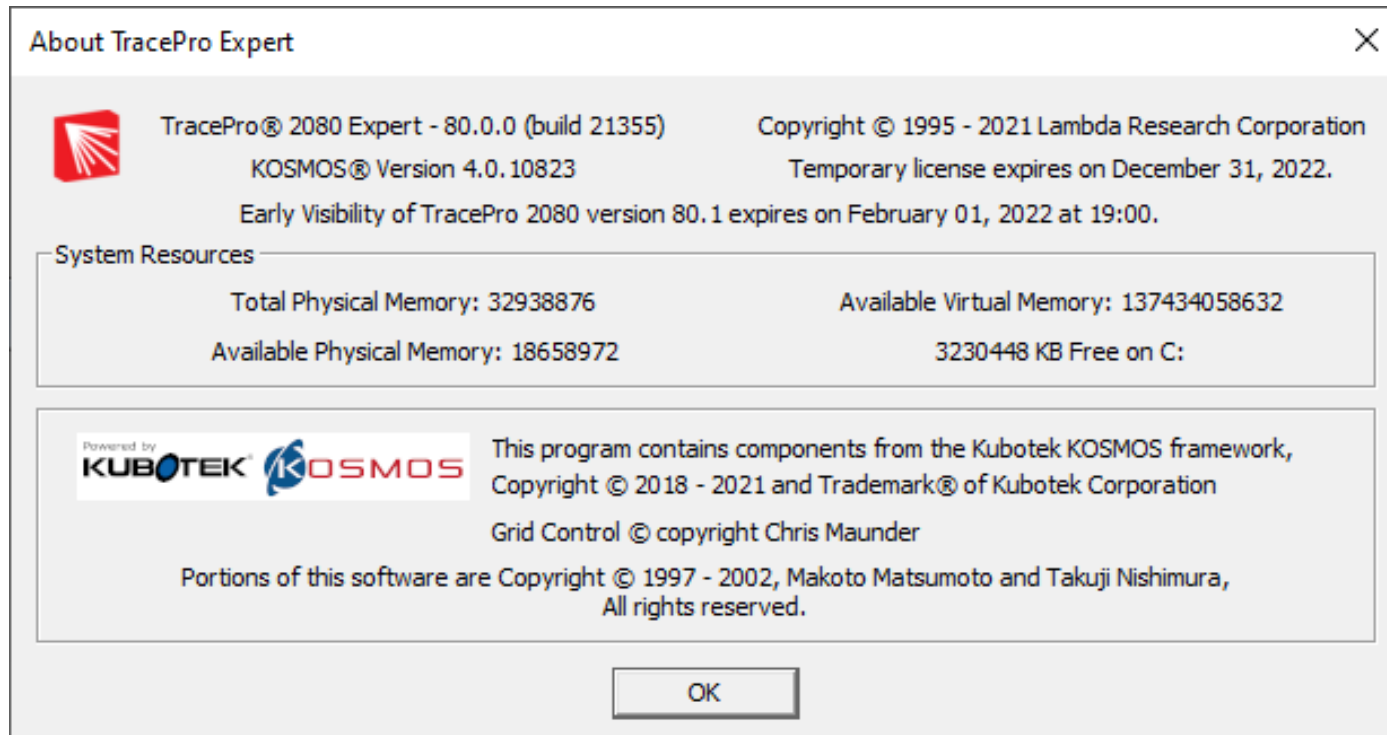
- New geometric modeler
- New surface types and aperture shapes for the Lens Element
- New All-mouse mode
- New dynamic highlighting and tooltips for identifying surfaces
- New file format *.OMLB
- STEP and IGES translators now included at no charge
- New CAD importers included at no charge
- New Environment options for Material and Bulk Scatter

➤ Light Source Builder

- New source builder utility for making many different source types

TracePro 2022 22.1

TracePro – New Kosmos® KCM® geometric modeler made by Kubotek3D® gives TracePro the capability to model asymmetric and free-form optical surfaces with the accuracy required for optical ray tracing.



TracePro 2022 22.1

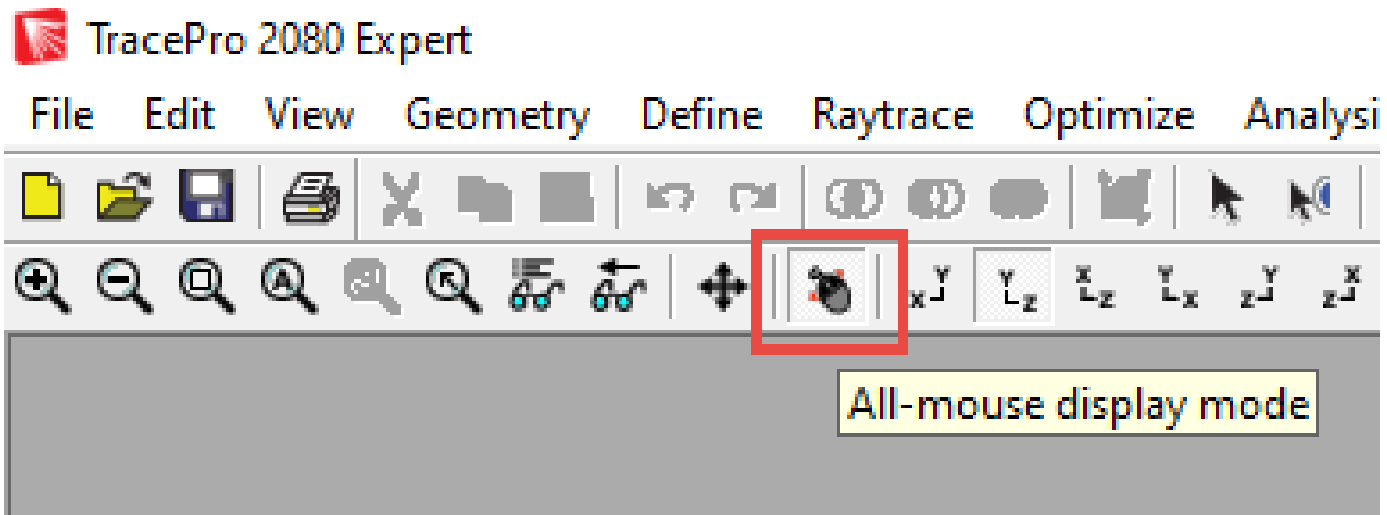
TracePro – CAD translators and importers included at no additional cost

- **CAD Translators**
 - **STEP**
 - **IGES**
 - **SAT**

- **CAD Importers**
 - **SOLIDWORKS**
 - **NX/Unigraphics**
 - **Inventor**
 - **Creo/Pro-E**
 - **SolidEdge**
 - **CATIA v4 and v5**

TracePro 2022 22.1

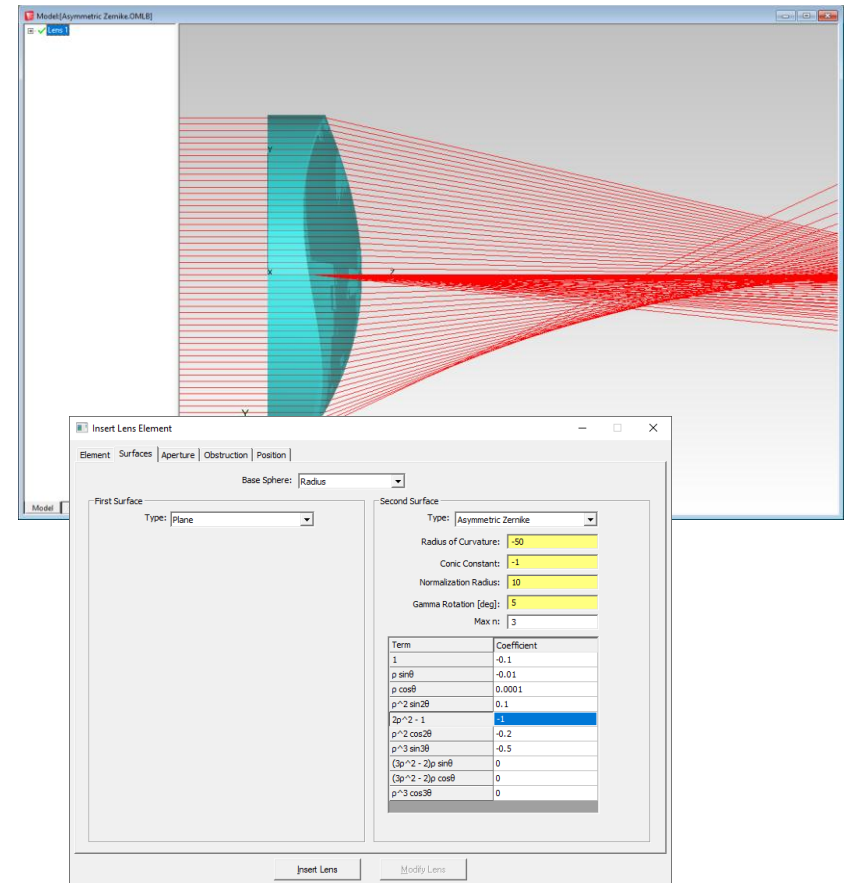
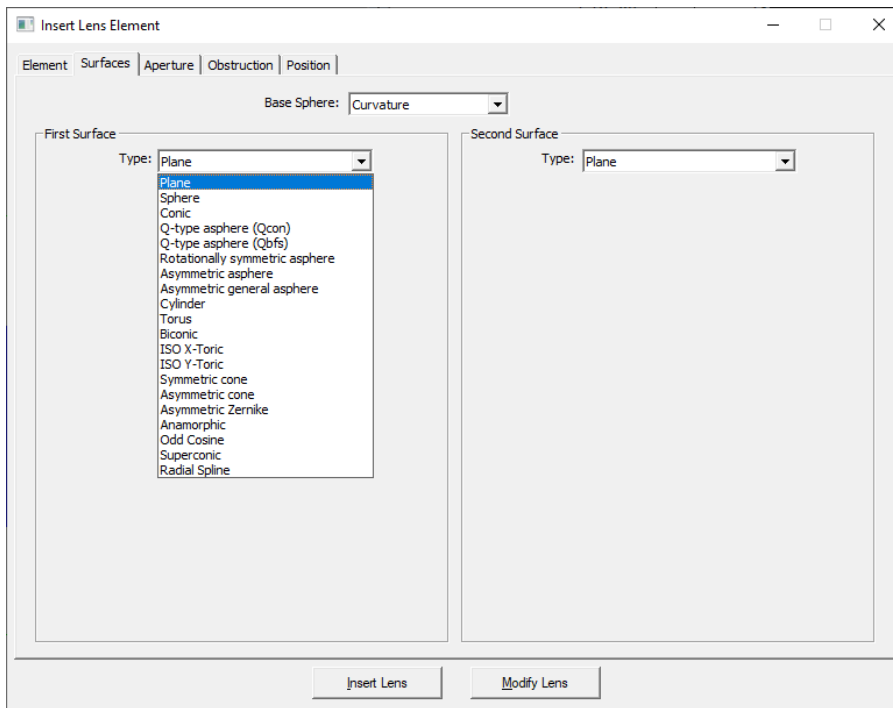
TracePro – New All-mouse mode enables users complete many view manipulations using only the mouse



- **Left-button drag – orbit the view**
- **Right-button drag up and down – zoom the view**
- **Both-buttons – pan the view**

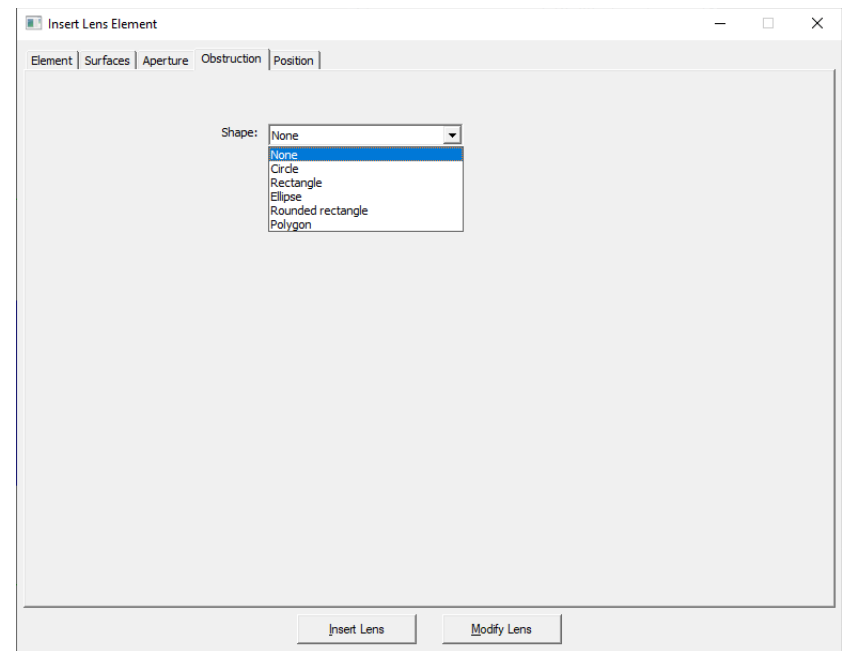
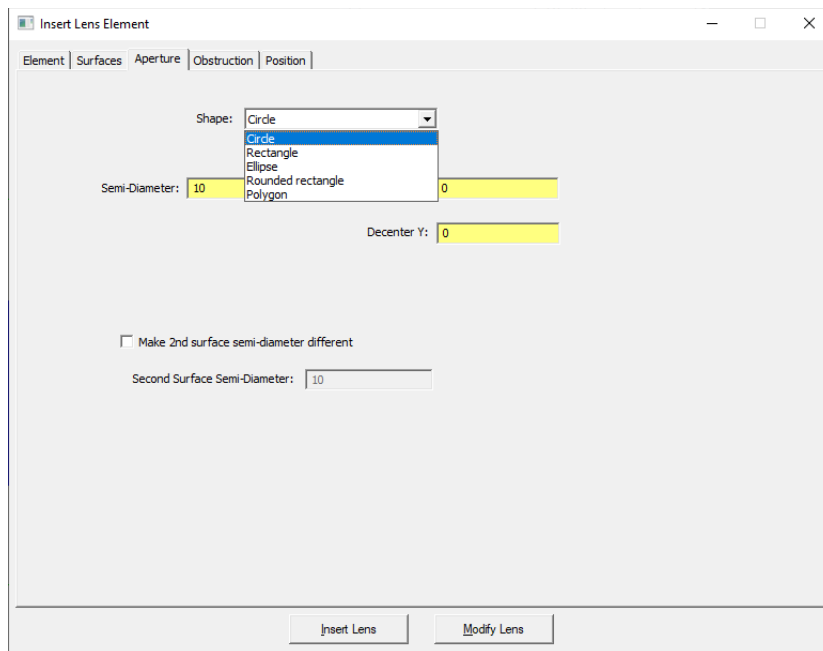
TracePro 2022 22.1

TracePro – Many new surface types have been added to the Lens Element including, Q-type aspheres, Biconics, Asymmetric Zernike, Super Conic, Radial Spline, and many more.



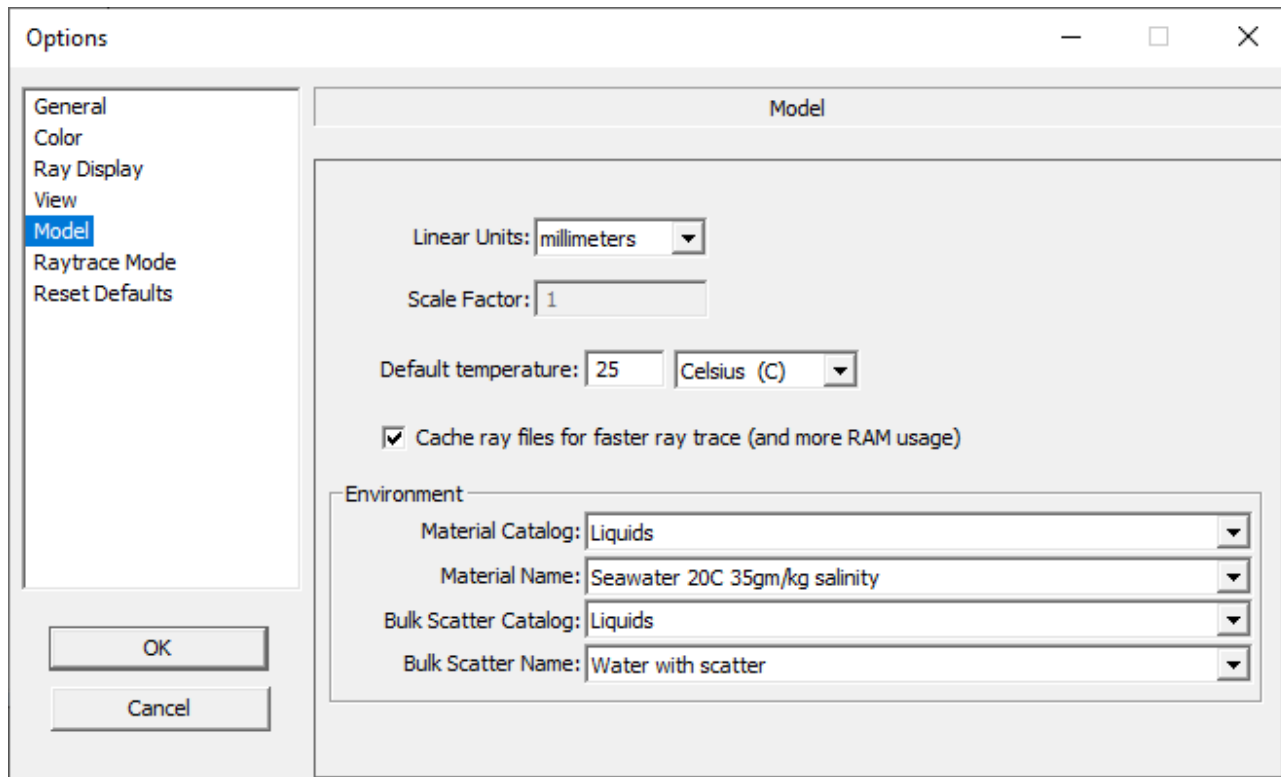
TracePro 2022 22.1

TracePro – Lens Element Aperture and Obstruction options now include Circle, Rectangle, Ellipse, Rounded rectangle, and Polygon



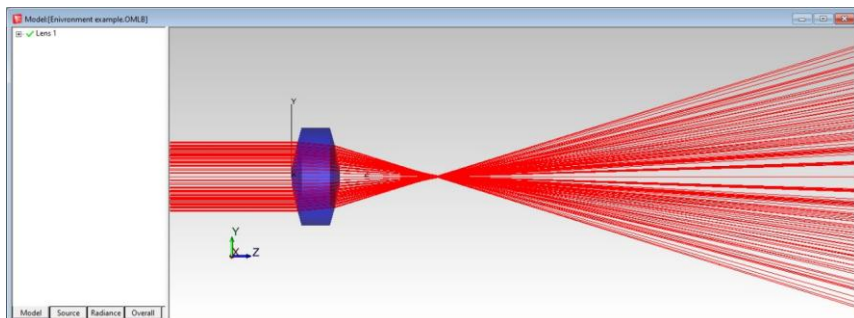
TracePro 2022 22.1

TracePro – Material and Bulk Scatter Properties can now be applied to the environment in TracePro

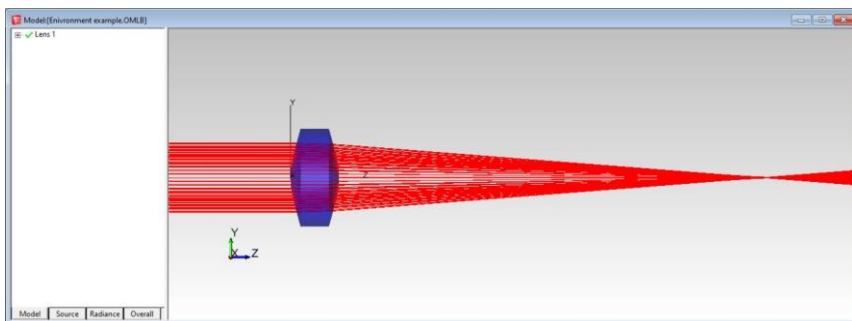


TracePro 2022 22.1

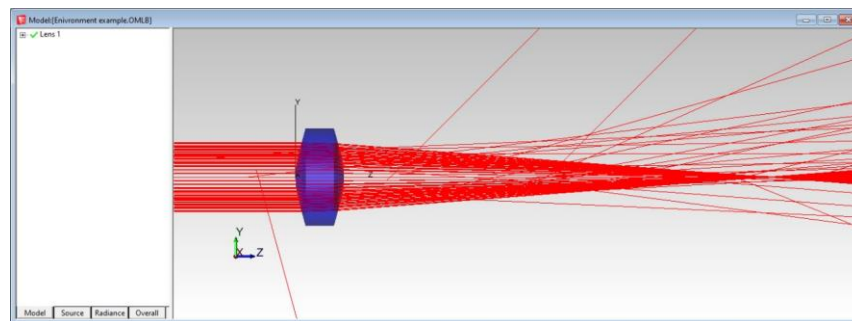
TracePro – Material and Bulk Scatter Properties can now be applied to the environment in TracePro



BK7 lens in air



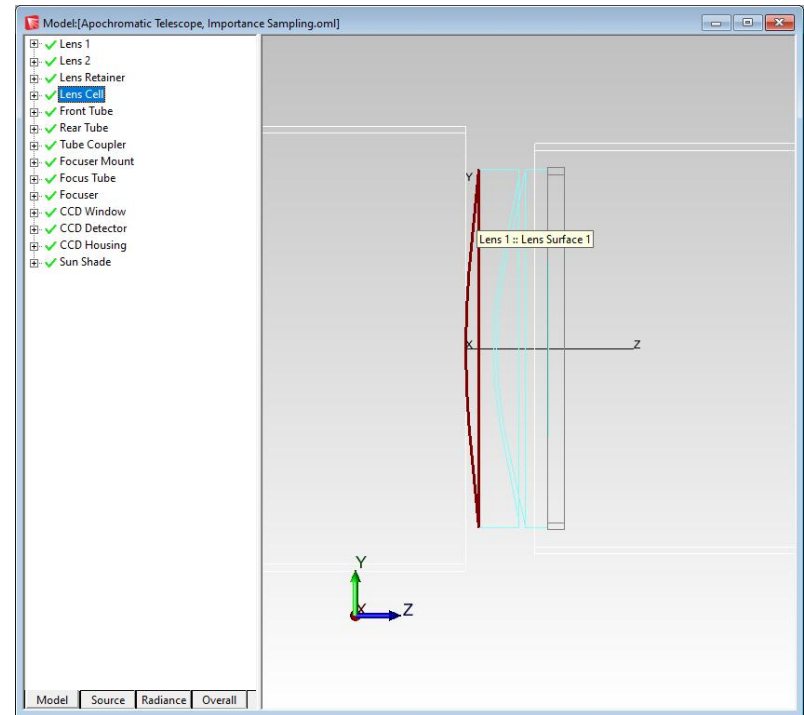
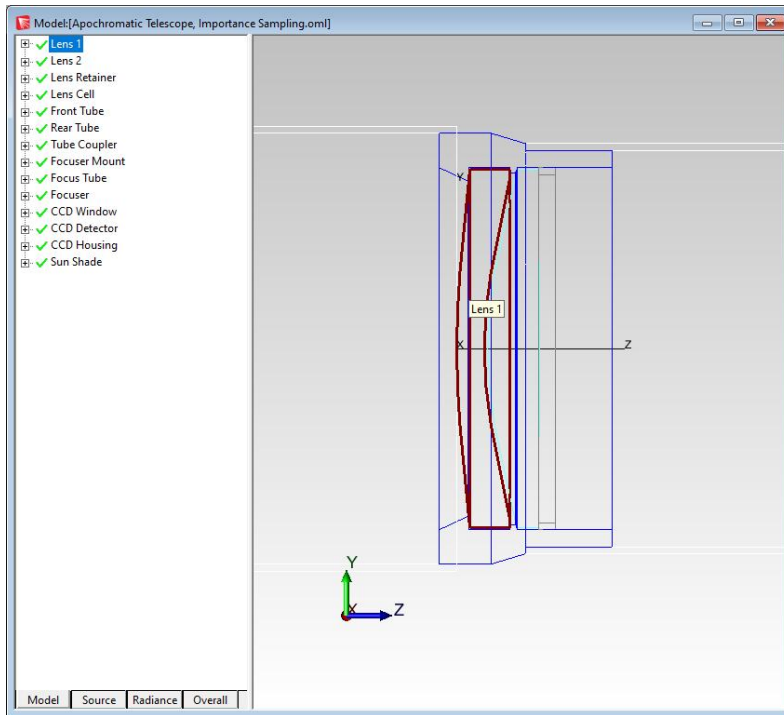
BK7 lens in seawater



BK7 lens in seawater with scatter

TracePro 2022 22.1

TracePro – New Dynamic Highlighting. Move the cursor over an object or surface to dynamically highlight the object or surface and display its name

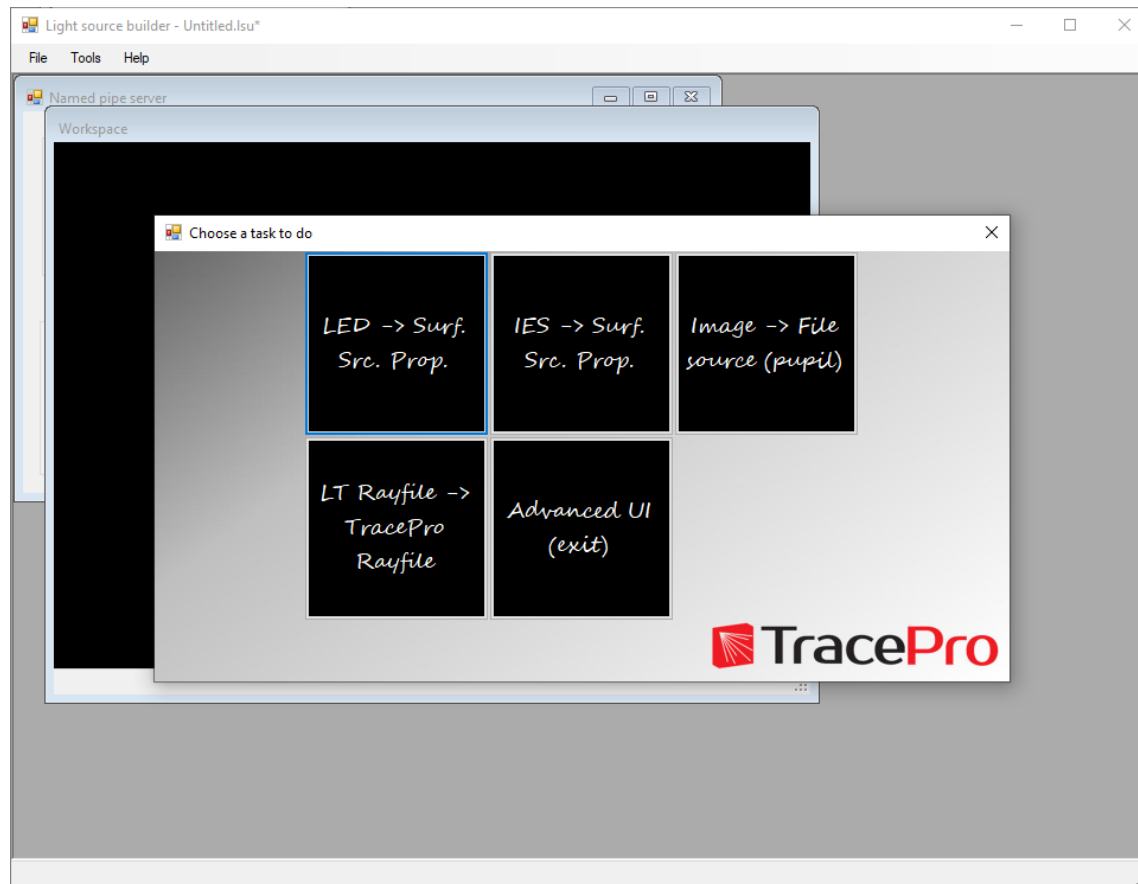


TracePro 2022 22.1

TracePro – New TracePro file extension .OMLB. TracePro 2022 can also open .OML files. Older versions of TracePro will not be able to open .OMLB files.

TracePro 2022 22.1

Light Source Builder – The new Light Source Builder gives users a wizard tool and gives users the ability to make multiple types of light sources.



TracePro 2022 22.1

Light Source Builder – Surface Source Property

Step 1: Sketch the beam profile from the pasted spec.

Custom beam

Coordinate type

Polar coordinate Rectangular coordinate

Reference points

Ref. point 0:	0	0
Ref. point 1:	0	1
Ref. point 2:	90	0.5951

Spline curve? Symmetric

0.06 0.2 0.4 0.6 0.8 1.0

0° 10° 20° 30° 40° 50° 60° 70° 80° 90° 100° 120°

OH.L01060

0.0 30.0 60.0 90.0 120.0

0.0 45.0 90.0 135.0 180.0 225.0 270.0 315.0

3D Preview Data

0° 45° 90° 135° 180° 225° 270° 315° 360°

0° 120° 180° 270°

Previous Next

TracePro 2022 22.1

Light Source Builder – Surface Source Property

Step2: Generate the wavelengths from the spectrum of source.

Spectrum

WV. (um)	Weight
0.3894	0.004
0.3933	0.007
0.3973	0.0101
0.4013	0.013
0.4053	0.0159
0.409	0.0192
0.4128	0.0276
0.4165	0.0459
0.4203	0.0794
0.425	0.1471
0.4296	0.2374
0.4343	0.3413
0.4381	0.421
0.4418	0.4563
0.4456	0.416
0.4493	0.3334
0.4531	0.2579
0.4559	0.2293
0.4587	0.2143
0.4634	0.1876
0.4681	0.1706
0.4727	0.1804
0.4774	0.2098
0.4821	0.246
0.4865	0.2767
0.4909	0.3029
0.4954	0.3250

Wavelength:
Weight:
Add Delete

Wavelength (um)

Scale: Linear Logarithm
Unit: um nm

Coordinate setup

	WV. (um):	Int. (au):
Ref. Pt1	0.38	0.0
Ref. Pt2	0.78	1.0

	X	Y
0	0.3894	0.004
1	0.4053	0.0159
2	0.4203	0.0794
3	0.4343	0.3413
4	0.4418	0.4563
5	0.4531	0.2579
6	0.4587	0.2143
7	0.4681	0.1706
8	0.4821	0.246
9	0.513	0.4087
10	0.5524	0.6786
11	0.5842	0.9167
12	0.602	1
13	0.6264	0.873
14	0.6563	0.5556
15	0.6873	0.2698
16	0.7266	0.0992
17	0.7641	0.0357
18	0.7772	0.0198

Resample points: 100

Generate

Previous Next

TracePro 2022 22.1

Light Source Builder – Surface Source Property from IES file

Step1: Select an IES file to load

IES file: C:\Users\djacobsen\Documents\Dave\ Documents\Customer Demos\Demo Examples\LED spot with Difuser, IES.ies

Load

Theta-Phi Array Beam

Polar (Theta) Num: 19 Azimuth (Phi) Num: 39

$\theta \backslash \phi$	0	9.47	18.9425	28.4175	37.89	47.3625	56.8375	66.3125
0	1541.069276	1541.069276	1541.069276	1541.069276	1541.069276	1541.069276	1541.069276	1541.069276
5	1514.429338	1518.024386	1522.328479	1522.778504	1518.339476	1517.680036	1515.215293	1518.024386
10	1406.299458	1406.741753	1412.690497	1415.802228	1421.883836	1426.325316	1417.067077	1414.067077
15	1176.123135	1168.698824	1170.582641	1184.998681	1185.675487	1188.795497	1173.512912	1181.067077
20	852.166618	858.151749	859.563633	859.048585	853.854484	854.413106	850.31668	855.067077
25	544.11054	549.407012	547.126362	543.791106	537.327337	544.139156	544.423422	536.067077
30	306.805103	312.080491	315.536942	310.806806	307.447622	310.549668	313.074276	310.067077
35	172.271423	169.824213	173.485761	172.06404	171.315792	171.160648	176.921088	174.067077
40	95.817549	93.552031	98.374245	98.614975	99.319036	101.591583	104.039642	101.067077
45	58.806321	60.140225	61.767839	61.961413	59.818978	61.329469	61.494795	64.067077
50	43.628841	43.257531	42.65771	43.26134	40.802523	41.313079	42.537062	43.067077
55	32.121384	31.256715	30.515384	30.595593	31.432254	31.378397	31.860134	32.067077
60	23.488101	22.672001	23.251288	22.532762	23.140041	23.394909	23.254375	23.067077
65	17.156877	16.173229	16.262771	15.480261	16.593275	16.289148	15.421443	16.067077

Previous Next

TracePro 2022 22.1

Light Source Builder – Surface Source Property from IES file

Step2: Generate the wavelengths from the spectrum of source.

Spectrum

WV. (um)	Weight
0.3894	0.004
0.3933	0.007
0.3973	0.0101
0.4013	0.013
0.4053	0.0159
0.409	0.0192
0.4128	0.0276
0.4165	0.0459
0.4203	0.0794
0.425	0.1471
0.4296	0.2374
0.4343	0.3413
0.4381	0.421
0.4418	0.4563
0.4456	0.416
0.4493	0.3334
0.4531	0.2579
0.4559	0.2293
0.4587	0.2143
0.4634	0.1876
0.4681	0.1706
0.4727	0.1804
0.4774	0.2098
0.4821	0.246
0.4865	0.2767
0.4909	0.3029
0.4954	0.3269

Wavelength:
Weight:
Add Delete

Wavelength (um)

Φ_{rel} %
 V_{λ}
OHL14330
nm
 λ

Scale
 Linear Logarithm
Unit
 um nm

Coordinate setup
WV. (um): Int. (au):
Ref. Pt1 0.38 0.0
Ref. Pt2 0.78 1.0

Resample points: 100
Generate
Previous Next

X	Y
0	0.3894 0.004
1	0.4053 0.0159
2	0.4203 0.0794
3	0.4343 0.3413
4	0.4418 0.4563
5	0.4531 0.2579
6	0.4587 0.2143
7	0.4681 0.1706
8	0.4821 0.246
9	0.513 0.4087
10	0.5524 0.6786
11	0.5842 0.9167
12	0.602 1
13	0.6264 0.873
14	0.6563 0.5556
15	0.6873 0.2696
16	0.7266 0.0992
17	0.7641 0.0357
18	0.7772 0.0196

New Light Source Builder

Surface Source Property from IES file

Step2: Generate the wavelengths from the spectrum of source.

Spectrum

Wv. (um)	Weight
0.3894	0.004
0.3933	0.007
0.3973	0.0101
0.4013	0.013
0.4053	0.0159
0.409	0.0192
0.4128	0.0276
0.4165	0.0459
0.4203	0.0794
0.425	0.1471
0.4296	0.2374
0.4343	0.3413
0.4381	0.421
0.4418	0.4563
0.4456	0.416
0.4493	0.3334
0.4531	0.2579
0.4559	0.2293
0.4587	0.2143
0.4634	0.1876
0.4681	0.1706
0.4727	0.1804
0.4774	0.2098
0.4821	0.246
0.4865	0.2767
0.4909	0.3029
0.4954	0.3250

Wavelength:
Weight:
Add Delete

Wavelength (um)

Φ_{rel} %

λ nm

OHL14320

Scale: Linear Logarithm Unit: um nm

Coordinate setup

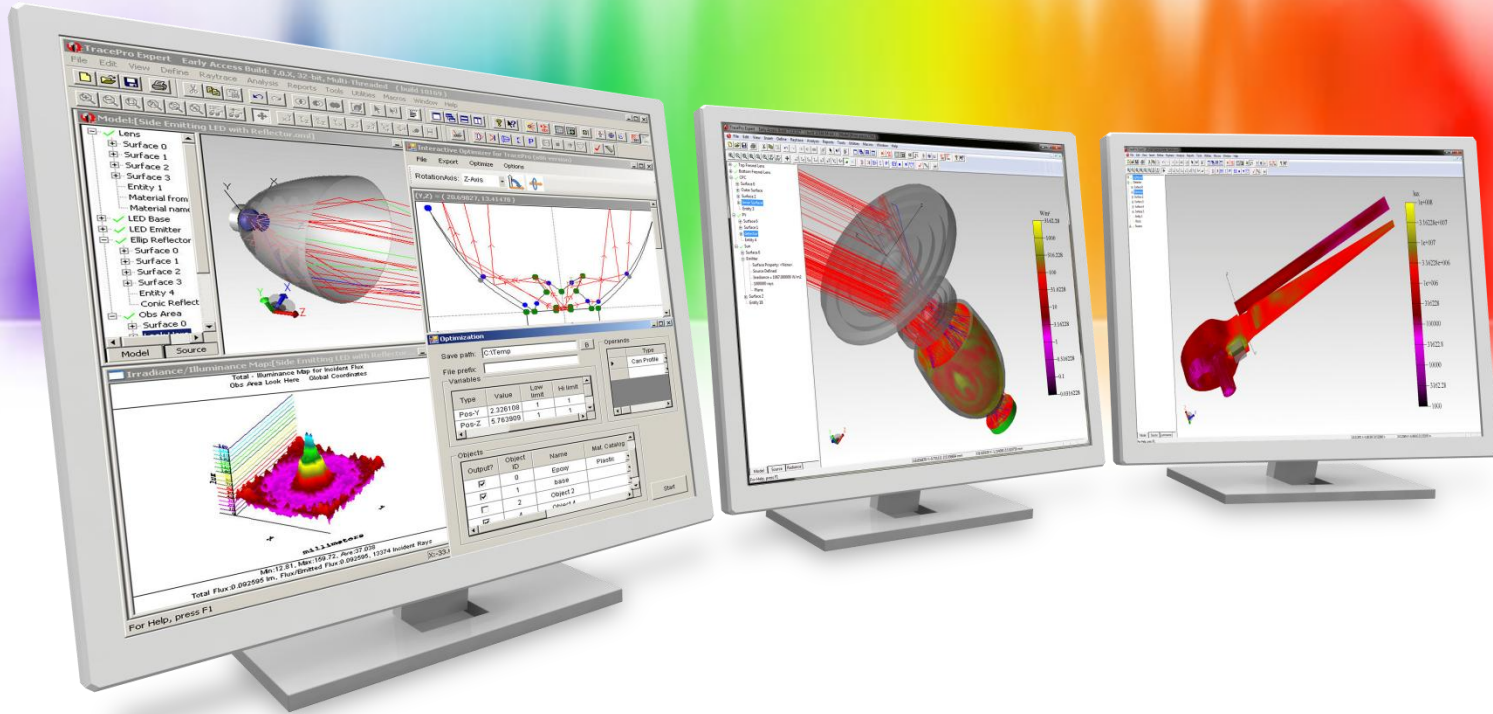
Ref. Pt1	Wv. (um):	Int. (au):
	0.38	0.0
Ref. Pt2	0.78	1.0

X	Y
0	0.3894 0.004
1	0.4053 0.0159
2	0.4203 0.0794
3	0.4343 0.3413
4	0.4418 0.4563
5	0.4531 0.2579
6	0.4587 0.2143
7	0.4681 0.1706
8	0.4821 0.246
9	0.513 0.4087
10	0.5524 0.6786
11	0.5842 0.9167
12	0.602 1
13	0.6264 0.873
14	0.6563 0.5556
15	0.6873 0.2698
16	0.7266 0.0992
17	0.7641 0.0357
18	0.7772 0.0198

Resample points: 100

Generate

Previous Next



New Features in TracePro 2021 21.5

TracePro 2021 21.5

➤ TracePro

- New Stary Light Analyzer utility

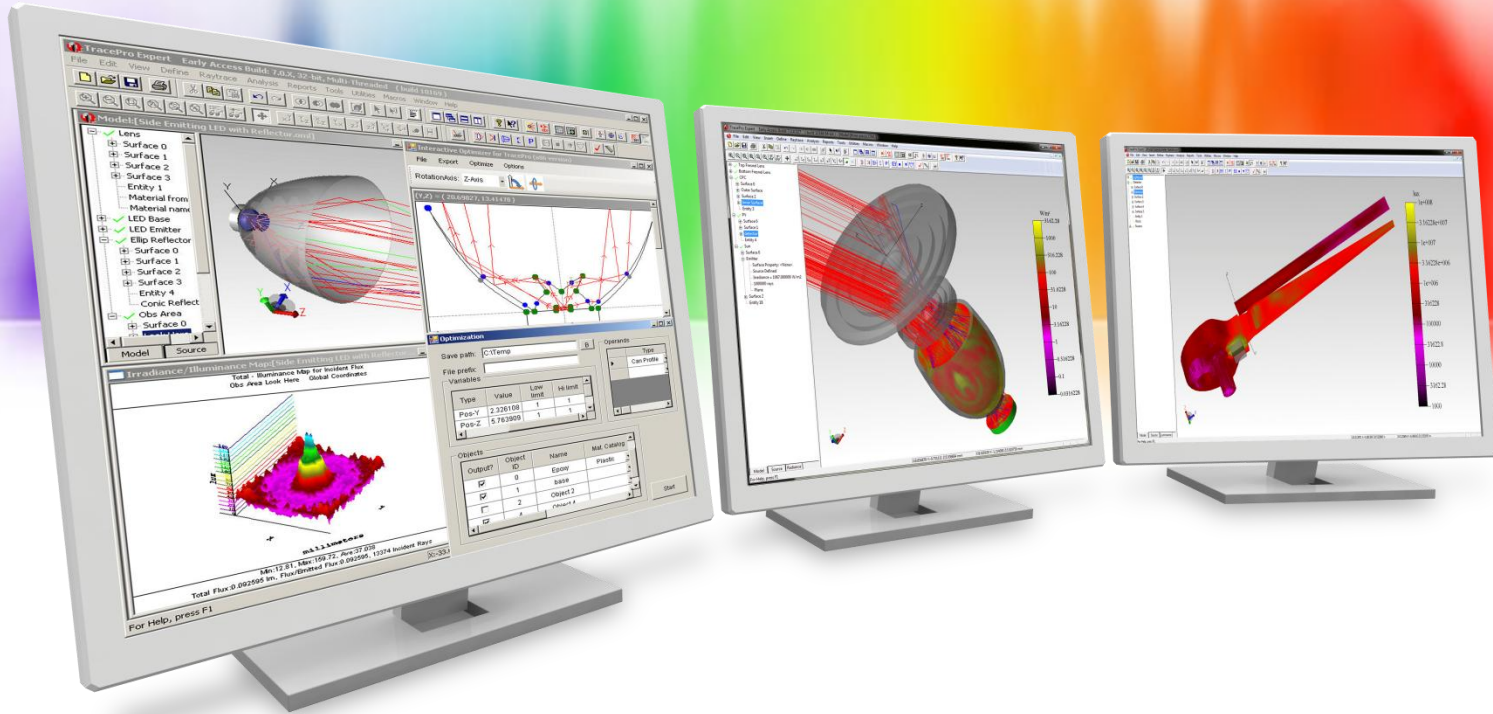
➤ Interactive Optimizer

- New rectangular hole option has been added to the Reflector object type

➤ Lighting Toolkit

- New regulations have been added
- Regulations have been updated

➤ New Scheme commands



New Features in TracePro 2021 21.4

TracePro 2021 21.4

➤ TracePro

- New Stary Light Analyzer utility

➤ Interactive Optimizer

- New rectangular hole option has been added to the Reflector object type

➤ Lighting Toolkit

- New regulations have been added
- Regulations have been updated

➤ New Scheme commands

TracePro 2021 21.4

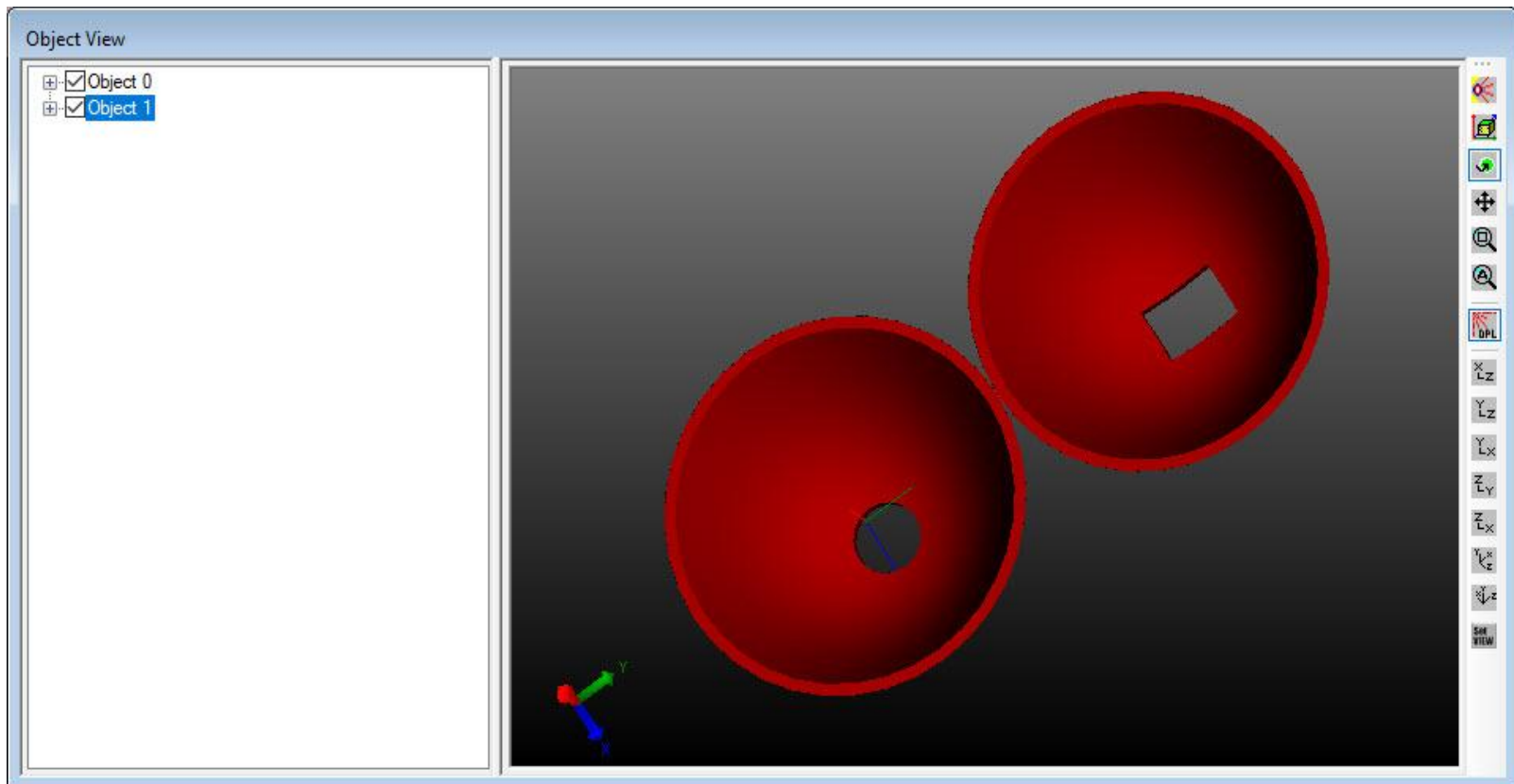
TracePro – A new Stray Light Analyzer utility has been added to TracePro. This utility automates and simplifies many of the steps necessary to do a stray light analysis.

DF	ID	Object/Surface Name	Catalog Name	Property Name
1		G1	NHG	H-ZLAF55F
2		Surface 0		
-1		Surface 1		
-1		Surface 2		
-1		Surface 3		
-1		Surface 4		
-1		Surface 5		
1		Surface 6		
2		Surface 7		
2		Surface 8		
1		Surface 9		
-1		Surface 10		
-1		Surface 11		
-1		Surface 12		
-1		Surface 13		

Theta Deg	Max In	Max Out	Total Flux	Ray Number	Path Number	Path Number	
15	42752	481021	2196.9	2484.715	79199	76898	39
16	42574	478660	3130.8	3529.132	89142	86784	34
17	42526	477560	3857.0	4338.123	95972	92287	36
18	41534	465926	4263.2	4791.409	100906	97512	28
19	40033	440746	4331.7	4883.745	127911	121961	33
20	36558	409519	3597.0	4056.297	116830	106451	31
21	69673	780158	450.059	521.004	75665	61175	22
22	23305	266147	411.508	480.294	156679	131284	31
23	24905	2841863	733.323	735.488	273007	202020	31
24	13631	827961	1046.8	936.743	420646	277940	50
25	95907	899470	1184.9	1270.987	486333	326338	50
26	60964	902553	1000.7	1093.493	486541	265351	50
27	56702	810741	1249.9	1275.979	643352	309813	50
28	57539	781180	1449.8	1336.213	760026	322348	50
29	69173	917222	1611.0	1340.017	833947	314353	50
30	63942	826795	1655.5	1158.352	826381	262869	50
31	40334	1602114	1017.7	270.417	579050	86951	50

TracePro 2021 21.4

Interactive Optimizer – The Reflector object type in the Interactive Optimizer has been updated so that a rectangular hole can be added to the reflector in addition to the previous circular option.



TracePro 2021 21.4

Lighting Toolkit – Eight new regulation tables have been added

- ECE R7 2019
- ECE R119 (2014)
- ECE R6 2008
- SAE J588
- SAE J222
- SAE J592
- SAE J594
- SAE J845

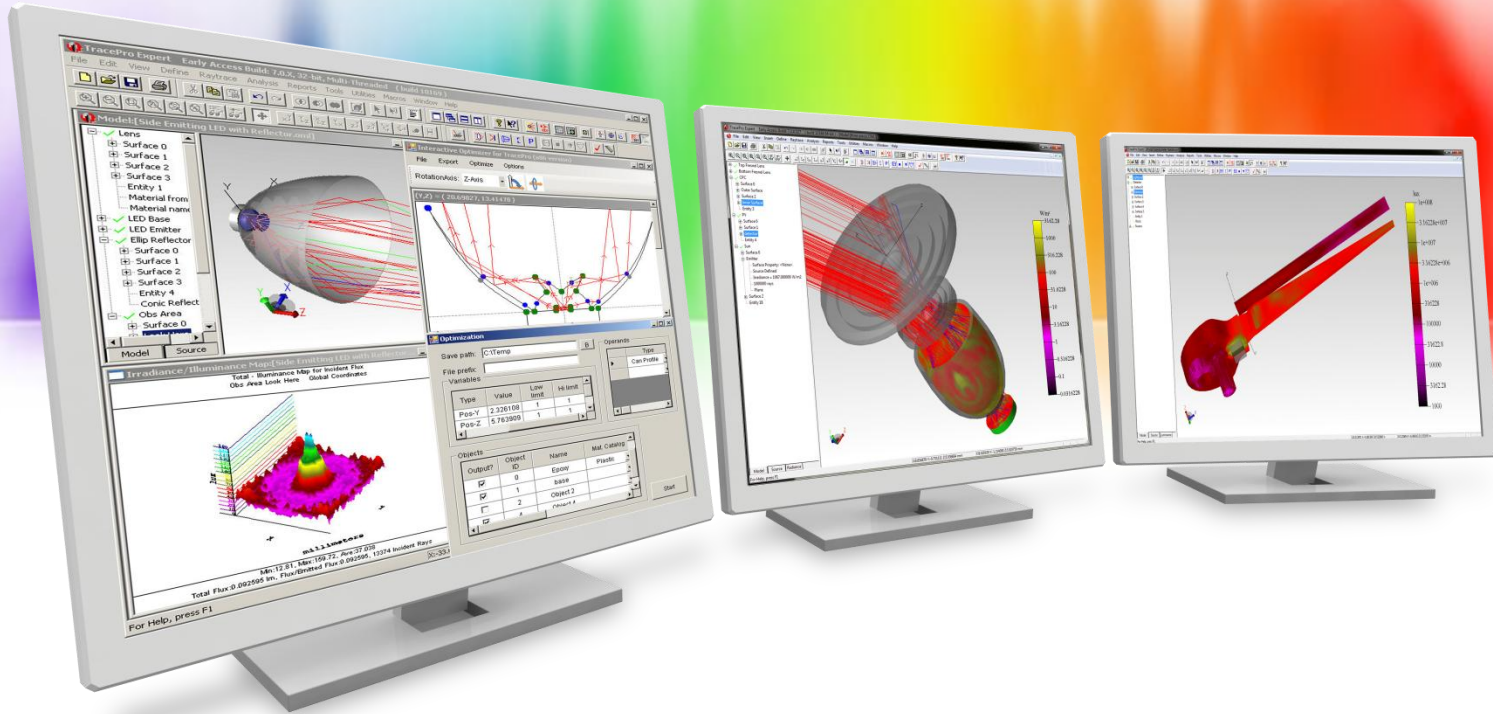
TracePro 2021 21.4

Lighting Toolkit – Six regulation tables have been updated

- ECE R6
- ECE R3
- ECE R91
- ECE R98
- ECE R112 (2010, 2012)
- FMVSS 108 Figures 17, 27, 28

TracePro 2021 20.3

- **New Scheme commands**
 - geometry:get-block-parameters
 - modify:primitive-block



New Features in TracePro 2021 21.3

TracePro 2021 21.3

➤ **TracePro**

- Exposure Compensation for Photorealistic Rendering and TrueColor plots

➤ **Lighting Toolkit**

- New ECE regulations have been added to the Lighting Toolkit

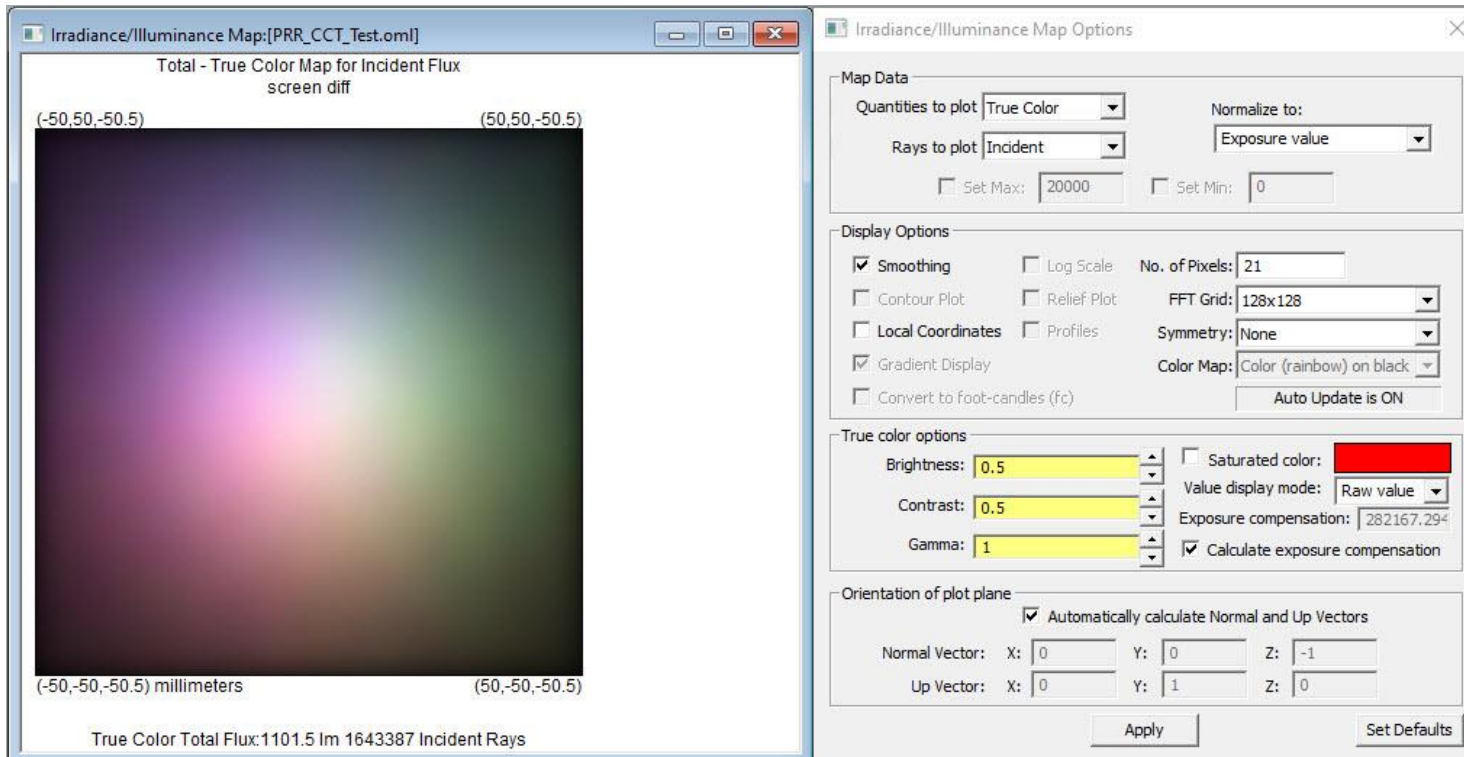
➤ **Analysis Toolkit**

- A polygon analysis shape for luminance analysis has been added

➤ **New Scheme commands**

TracePro 2021 21.3

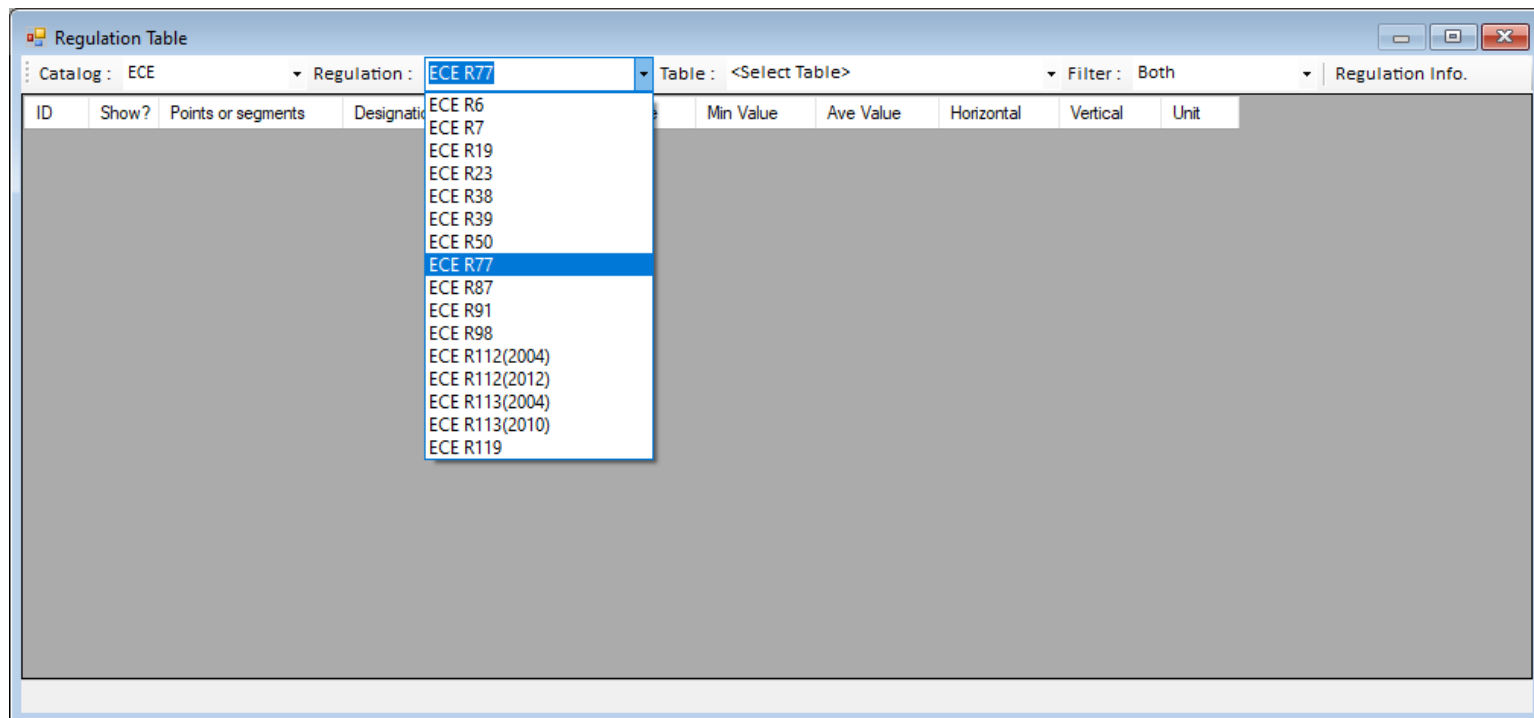
TracePro – A new Exposure Compensation option has been added to the Photorealistic Rendering and TrueColor Plots. This allows normalizing the color to a saturated white or monochromatic color. There is also a new option to normalize to the highest color in the plot.



TracePro 2021 21.3

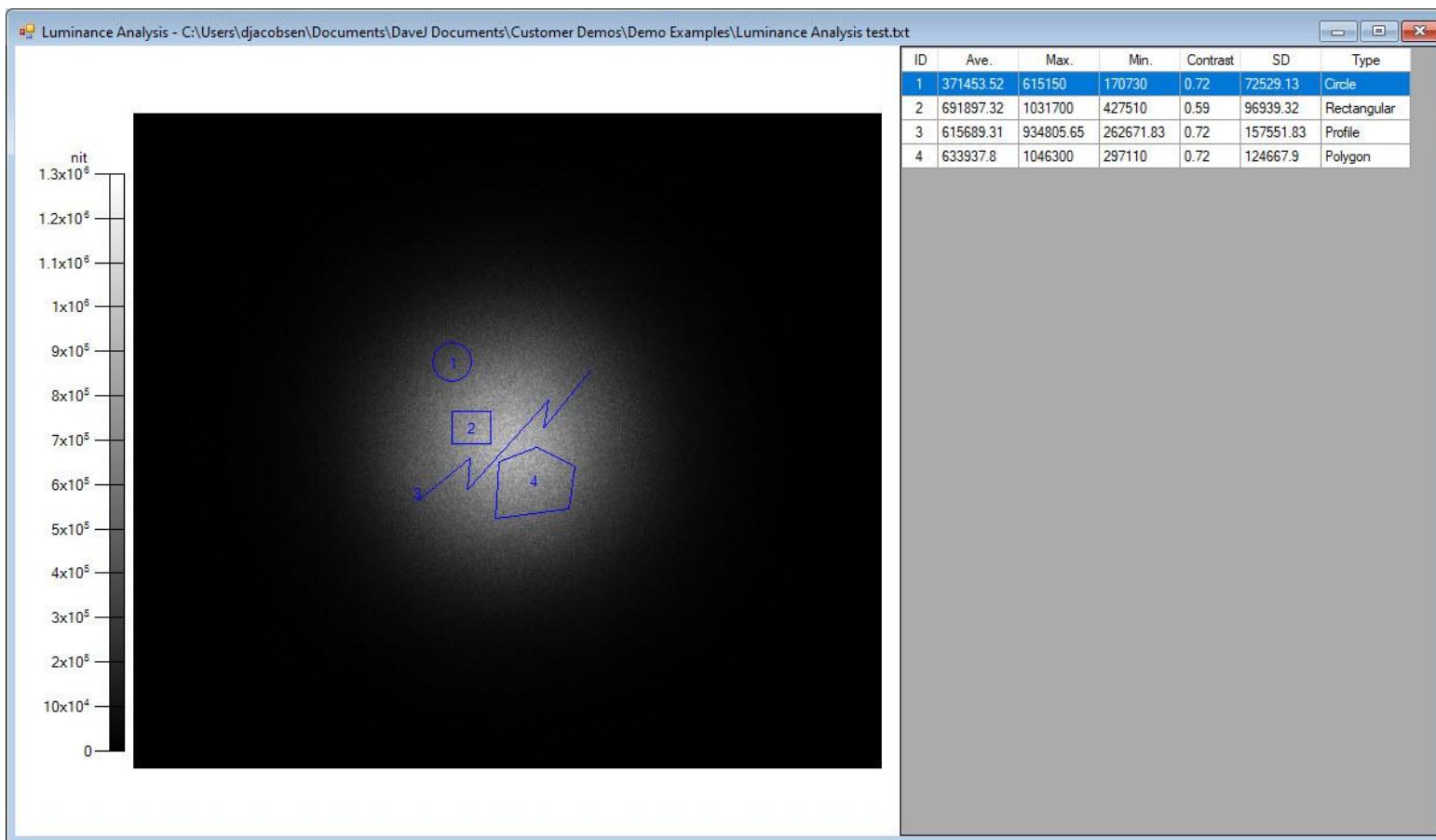
Lighting Toolkit – Three new ECE regulation tables

- ECE R91 side marker lamps
- ECE R119 cornering lamps
- ECE R77 parking lamps



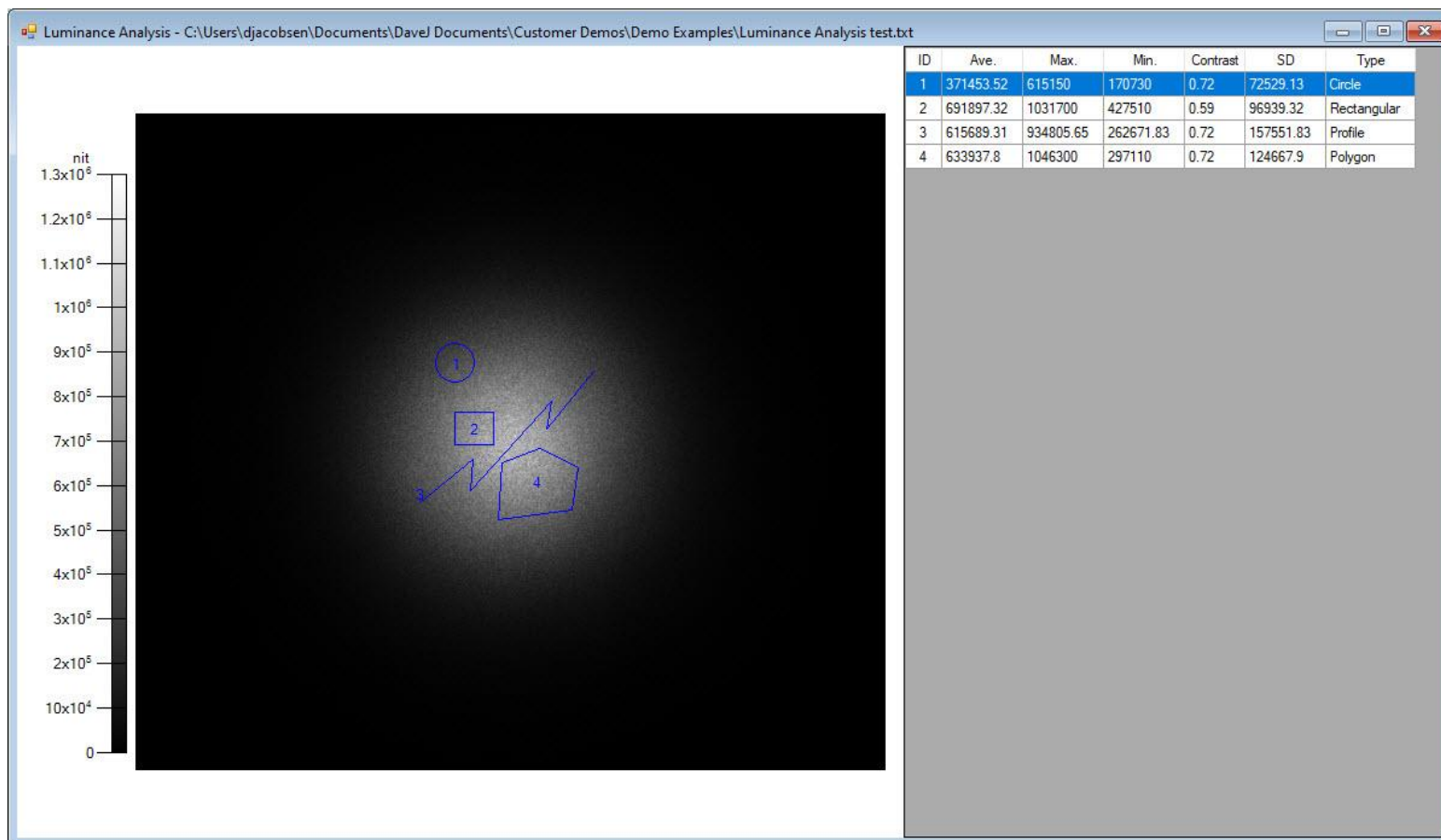
TracePro 2021 21.3

Analysis Toolkit – A new analysis shape, polygon, has been added to the Luminance Analysis tool in the Analysis Toolkit



TracePro 2021 21.3

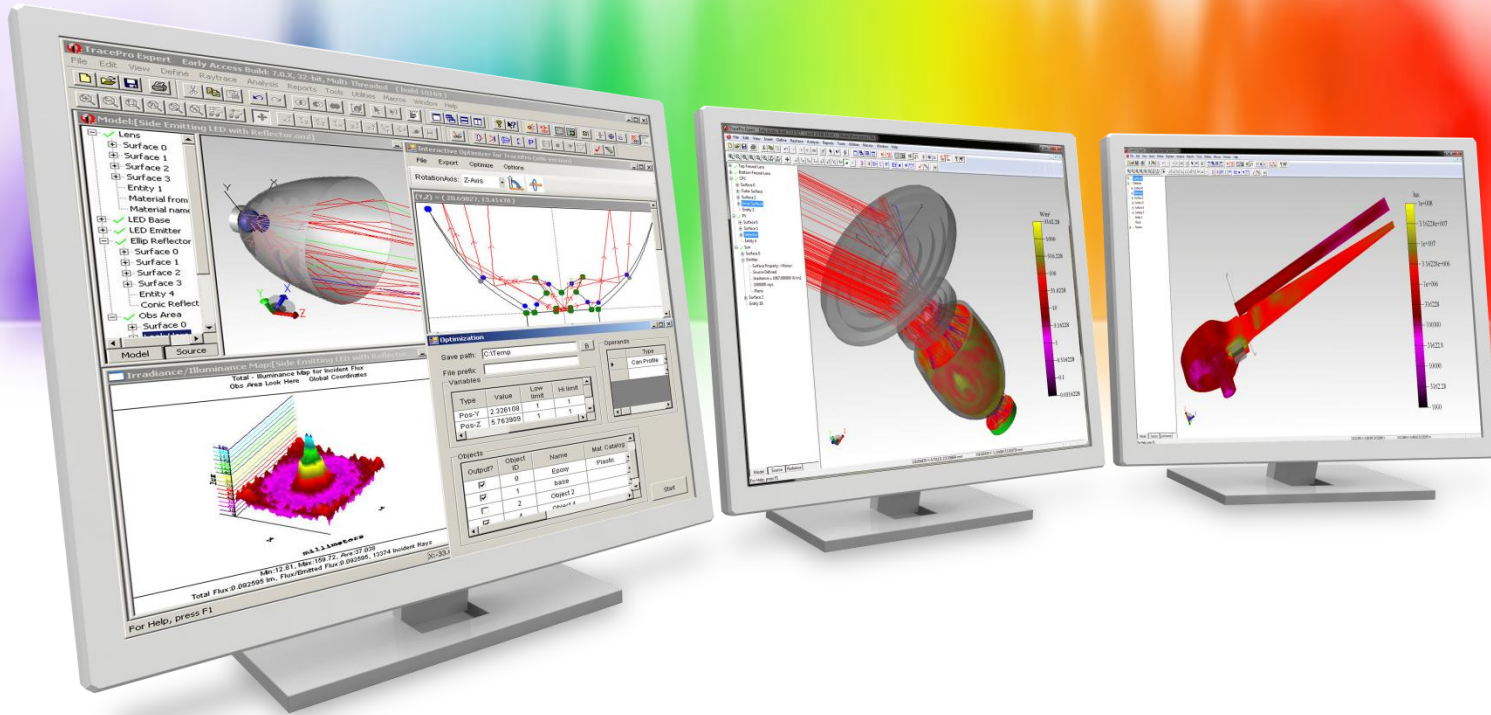
Analysis Toolkit – A new analysis shape, polygon, has been added to the Luminance Analysis tool in the Analysis Toolkit



TracePro 2021 20.3

➤ **New Scheme commands**

- New Scheme commands have been added
 - geometry:make-circular-edge-3pt
 - geometry:make-circular-edge



New Features in TracePro 2021 21.2

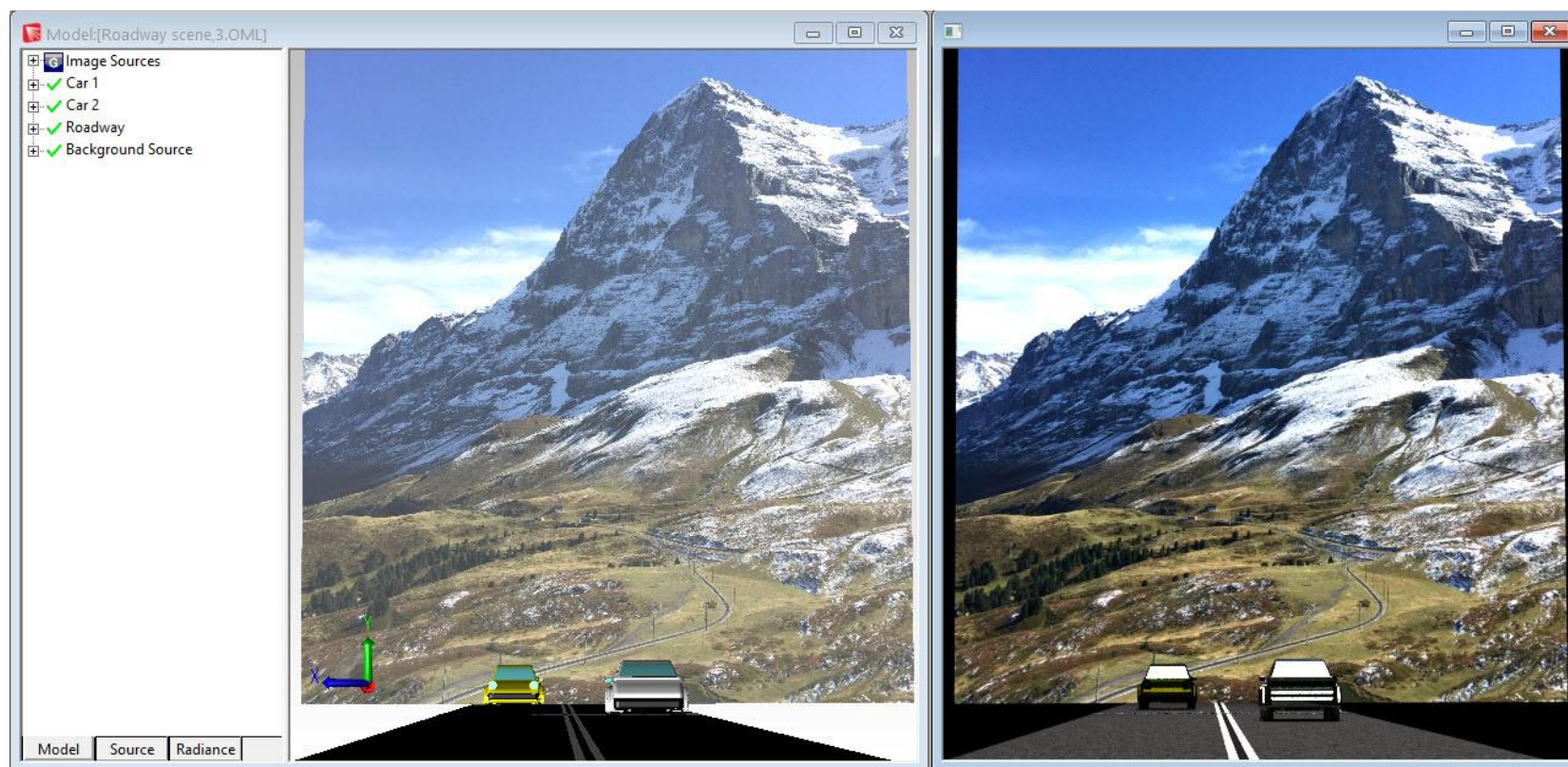
TracePro 2021 21.2

➤ TracePro

- New source type - Image Source
- Updated CGDM glass catalogs

TracePro 2021 21.2

TracePro – A new source type, the Image Source has been added. An image file such as a JPEG or Bitmap file can now be used as a source in TracePro.



TracePro 2021 21.2

TracePro – A new source type, the Image Source has been added. An image file such as a JPEG or Bitmap file can now be used as a source in TracePro.

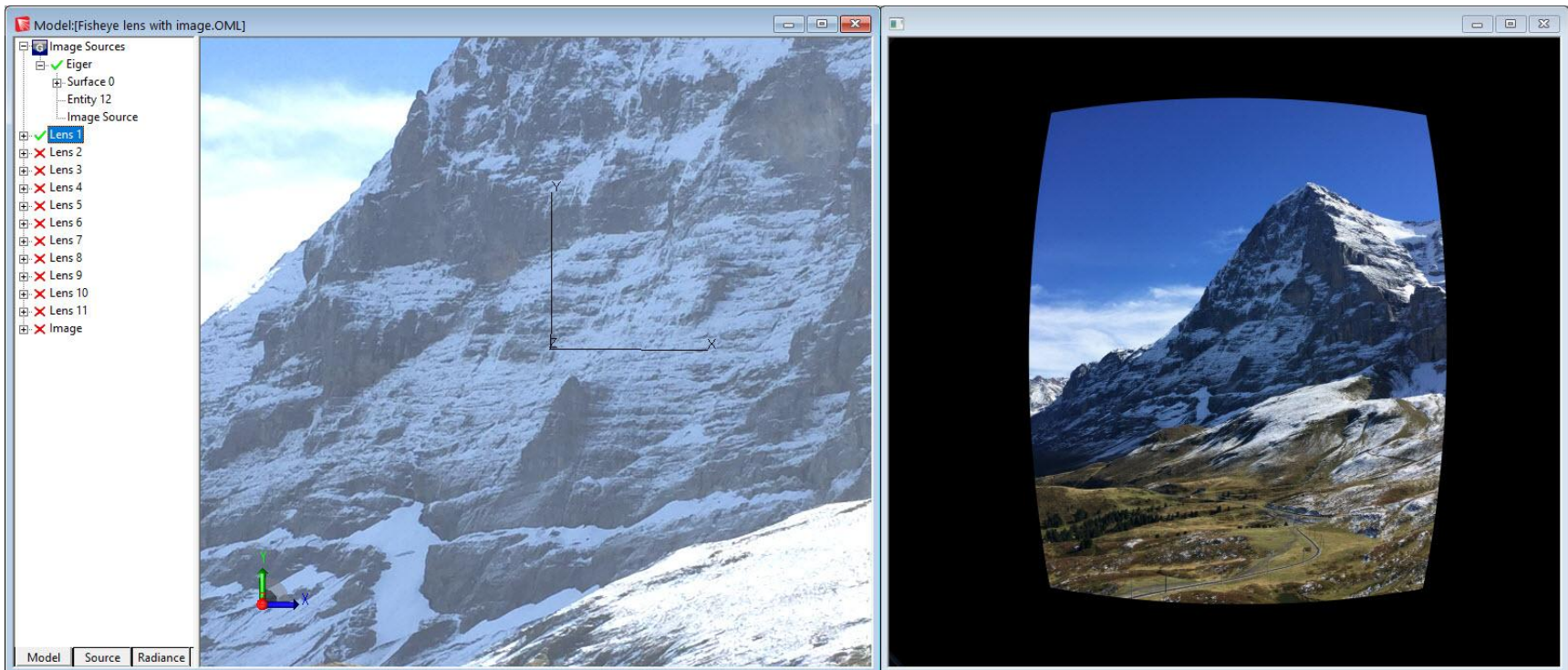
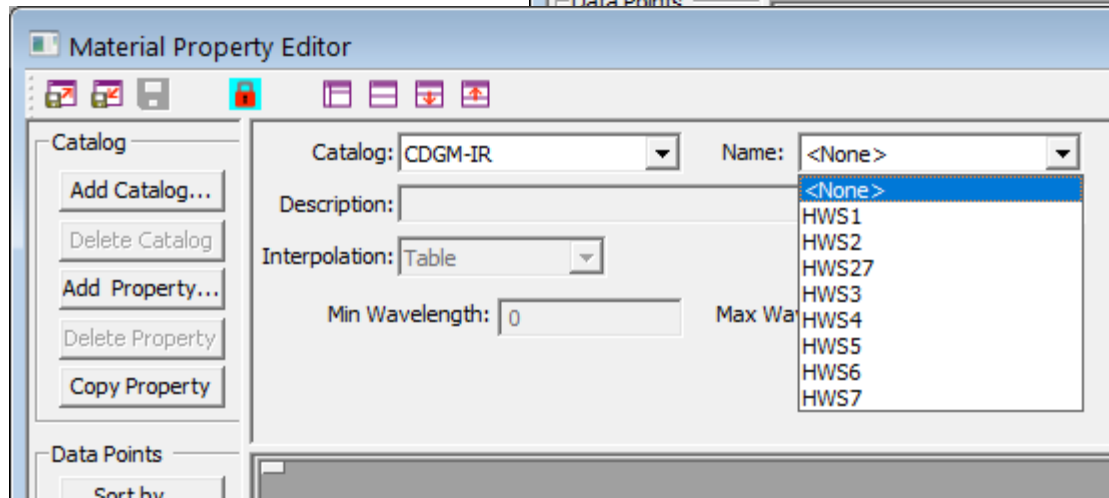
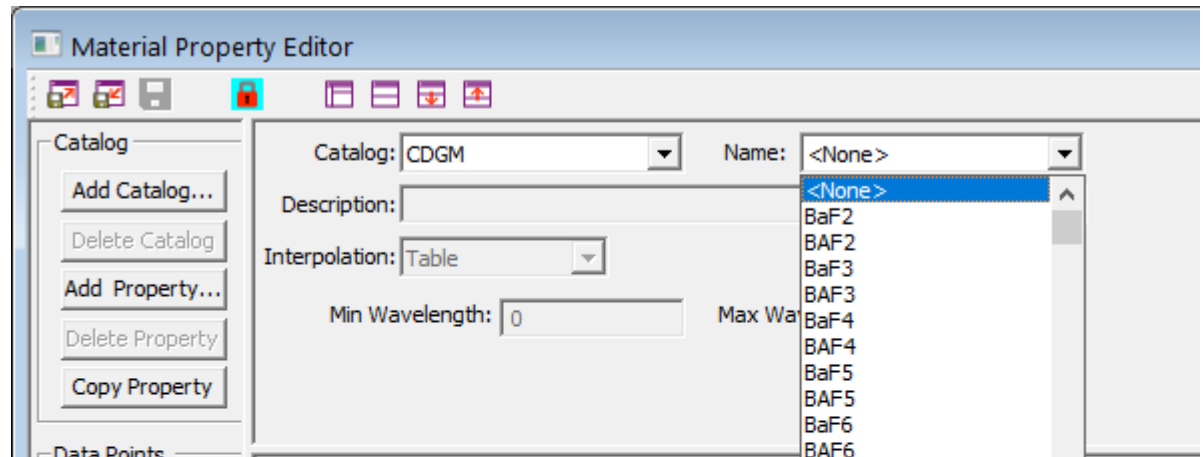
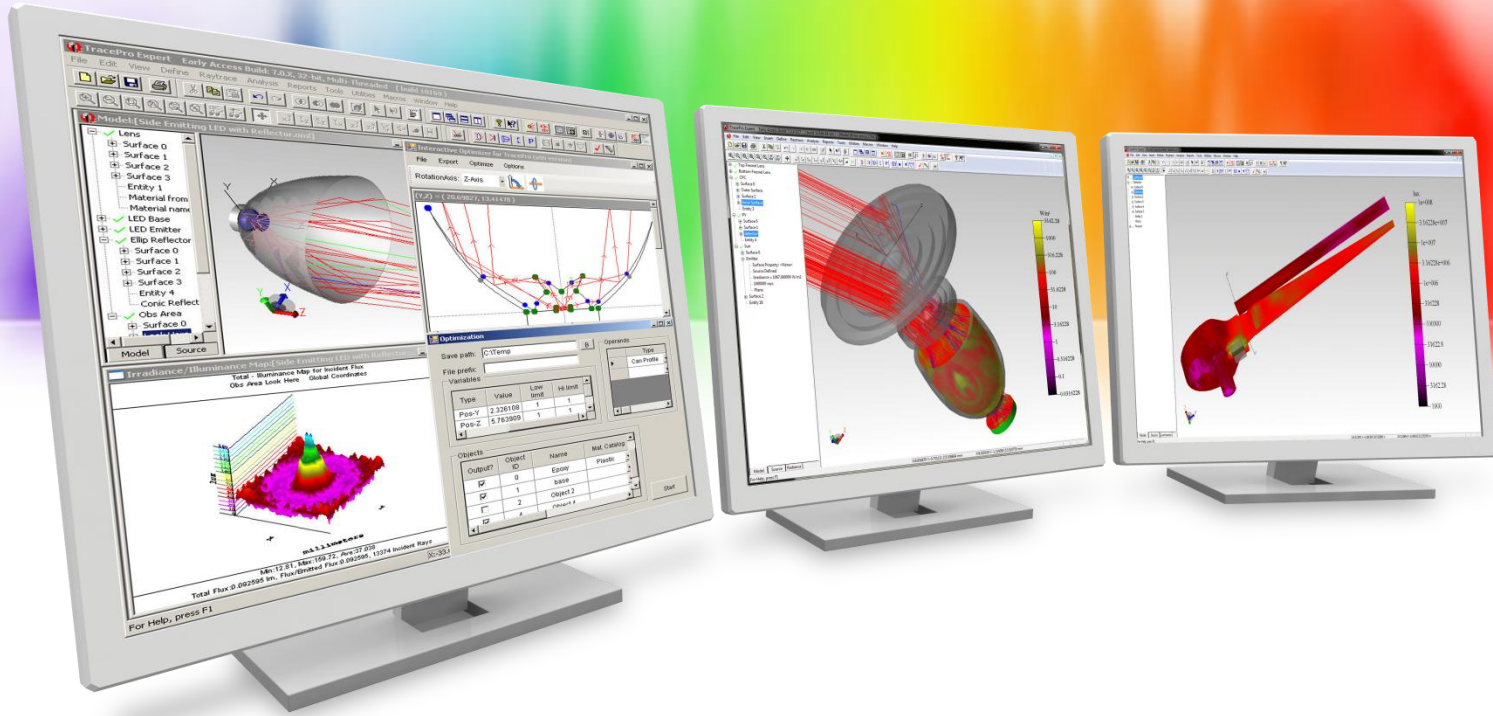


Image as viewed through a wide angle lens

TracePro 2021 21.2

TracePro – The CDGM glass catalog as been updated to reflected the latest data. A new CDGM-IR catalog of IR glass has been added.





New Features in TracePro 2021 21.1

TracePro 2021 21.1

➤ **Interactive Optimizer**

- New capability for editing values of points in the Irradiance Profile operand

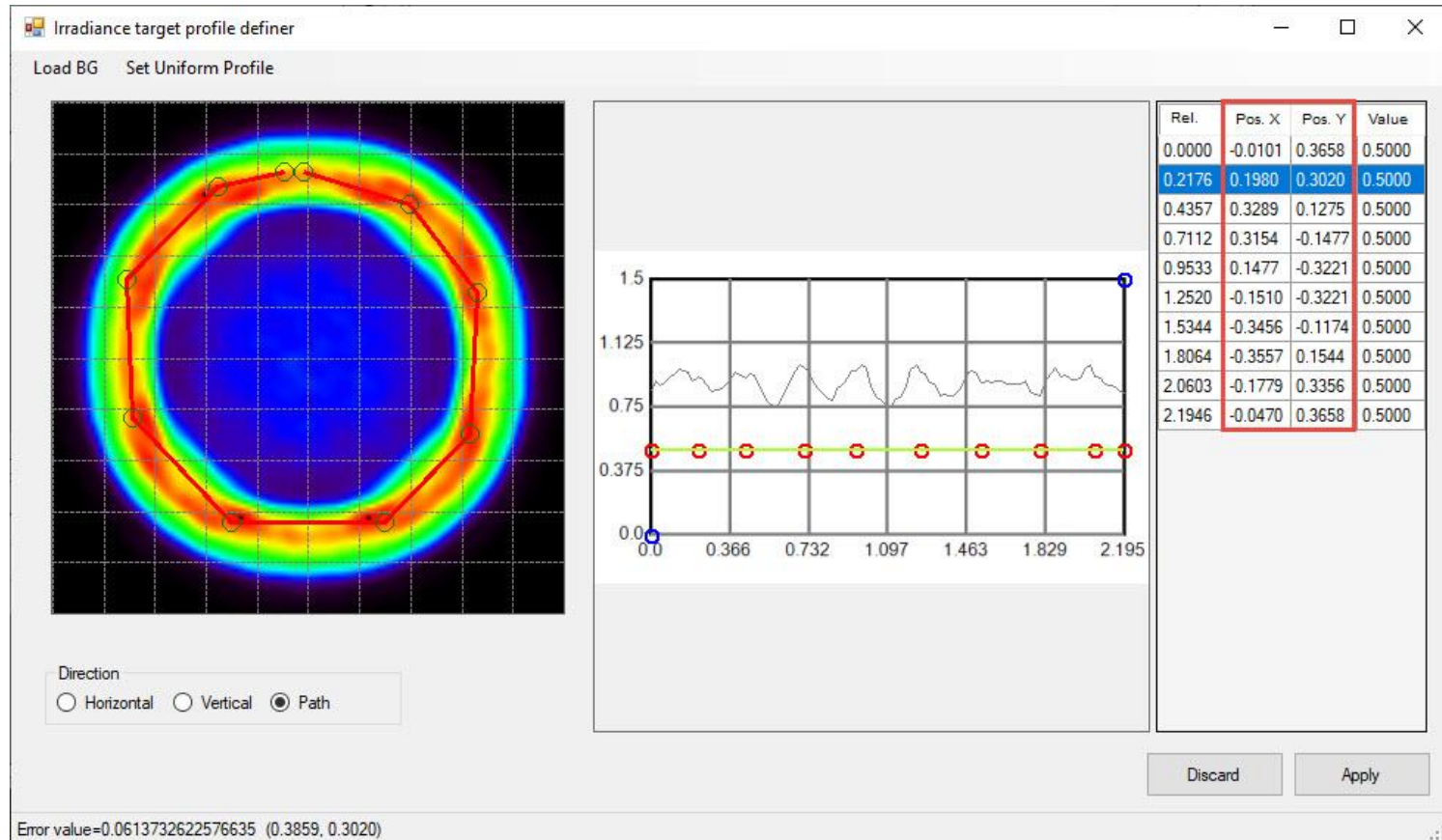
➤ **Lighting Toolkit**

- New FMVSS 108 regulations have been added

➤ **New Scheme command**

TracePro 2021 20.1

Interactive Optimizer – The capability to edit the values of points when defining the Irradiance Profile operand has been added



TracePro 2021 20.1

➤ Lighting Toolkit

➤ 62 FMVSS 108 regulations have been added

ID	Show?	Type	Points or segments	Min Value	Horizontal	Vertical	Unit
0	<input checked="" type="checkbox"/>	Point	15U-20IB	0.3	20 L	15 U	cd_HV
1	<input checked="" type="checkbox"/>	Point	15U-800B	0.3	80 R	15 U	cd_HV
2	<input checked="" type="checkbox"/>	Point	15D-20IB	0.3	20 L	15 D	cd_HV
3	<input checked="" type="checkbox"/>	Point	15D-800B	0.3	80 R	15 D	cd_HV

ID	Show?	Type	Points or segments	Designation	Max Value	Min	Unit
0	<input checked="" type="checkbox"/>	Point	15U-20IB	15U-20IB	-	-	HV
1	<input checked="" type="checkbox"/>	Point	15U-800B	15U-800B	-	-	HV
2	<input checked="" type="checkbox"/>	Point	15D-20IB	15D-20IB	-	-	HV
3	<input checked="" type="checkbox"/>	Point	15D-800B	15D-800B	-	0.3	cd_HV

TracePro 2021 20.1

➤ **New Scheme command**

- New Scheme command has been added
 - edit:rotate-objects