



LITESTAR 4D v.3.00

User's Manual

WebCatalog – Web Interactive Electronic Catalog

June 2015



Index

| | |
|--|---|
| Webcatalog – Web Interactive Electronic Catalog | 3 |
| Introduction and Access..... | 3 |
| Search Methods | 4 |
| Search by Technical Data | 4 |
| Search from List..... | 5 |
| Search by Type | 5 |
| View modes..... | 6 |
| Product data sheet | 6 |
| Drag&Drop | 6 |
| Technical data sheet | 7 |
| Technical Sheet Setting | 7 |
| Click on the Update icon on the right to update all the data in the Technical sheet and click on the relative icon on the top right to print. | 7 |



Webcatalog – Web Interactive Electronic Catalog

Introduction and Access

LITESTAR 4D – WebCatalog is an application that allows manufacturers’ luminaires and lamps catalogs to be visualized by means of internet connection to the Oxytech site (<http://www.oxytech.it>), or to the site of the individual manufacturers or wholesalers who have implemented this function.

The spirit of the WebCatalog application is to make immediately available the luminaire data, technical and commercial details and photometric files which the manufacturers, partners in the **Litestar Project**, supply to the market.

This means constantly updated catalogs are available in real time.



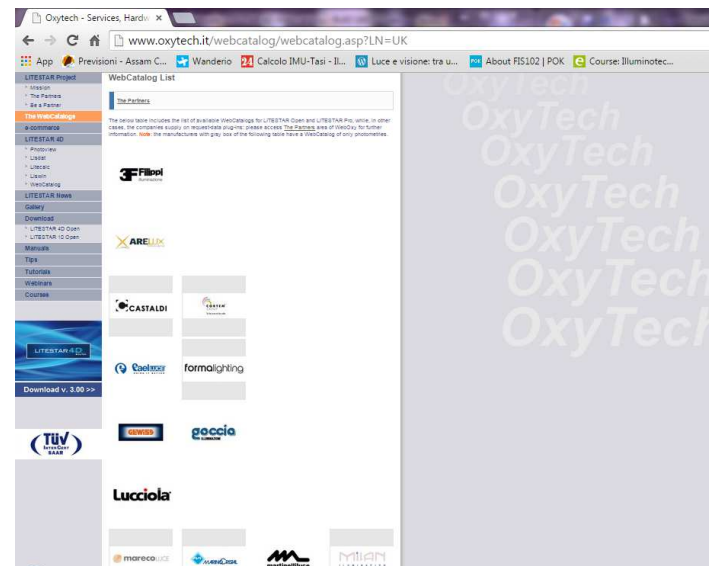
Access to the Webcatalog (present in WebOxy) can be gained from the Litecalc or Liswin modules by means of the *WebCatalog* icon situated:

- On the right of the screen in the library TAB, in Litecalc
- In the icon bar in Liswin
- In the Links menu of both modules

Alternatively it is possible to access directly from WebOxy using a browser (internet surf program).

After typing the web address <http://www.oxytech.it> in the browser address bar and opening the home page, select the *WebCatalog* button in the menu on the left to visualize the manufacturers’ catalogs.

Clicking on the icon of the manufacturer that interests you on the list to the right opens the WebOxy page with this manufacturer’s data, and the WebCatalog button to click for access to the relative catalog, in which you can search and select the product to be imported into Liswin or Litecalc, or choose to print the technical sheet, as illustrated in the following chapters.



Notes

The WebCatalogs present on the sites of the individual manufacturers or wholesalers are solely accessible from the relative sites. It is advisable therefore to ask the manufacturer or wholesaler that interests you if they have activated the WebCatalog service on their home page.

The speed of the internet connection only affects how quickly the data appears on screen and can be downloaded.



Search Methods

Opening the catalog, three keys situated in the bar in the upper part of the screen allow selection of one of the three search modes available, which are:

- ▶ Search by Technical Data
- ▶ Search from Catalog
- ▶ Search by Application

Search by Technical Data

Technical Data search allows product search by selecting the characteristics step by step, following a pre-established “tree” structure.

In the dropdown menu on the top left, various types of tree structure are available:

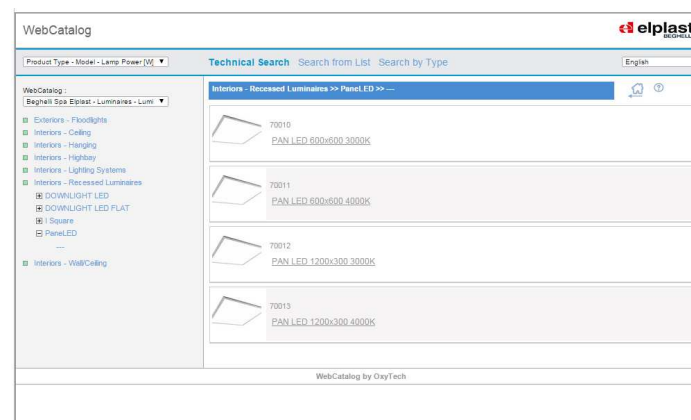
- ▶ Product type....
- ▶ Source type ...
- ▶ Lamp power ...

On selection of one of the models, the vertical bar on the left of the screen shows the “families” into which the catalog has been divided.

The choice of the item in the list takes place in the order foreseen by the selection: e.g. Type – Model - power will present the items in the same order in the tree.

Selection of the third level element opens on the right the list of the elements with the same values (in the example with the same Type – IP degree - power).

Selection of the product on the right, with a mouse click on the description, will open the product data sheet.



Notes

| | |
|--|---|
| | Click on this icon to return to the previous page |
| | Click on this icon to access the Help window |

Search Methods

Search from List

When Search from List is selected, the left-hand menu shows a code-ordered list complete with product description.

Selection of the code with the left mouse button directly opens the product data sheet.

Search by Type

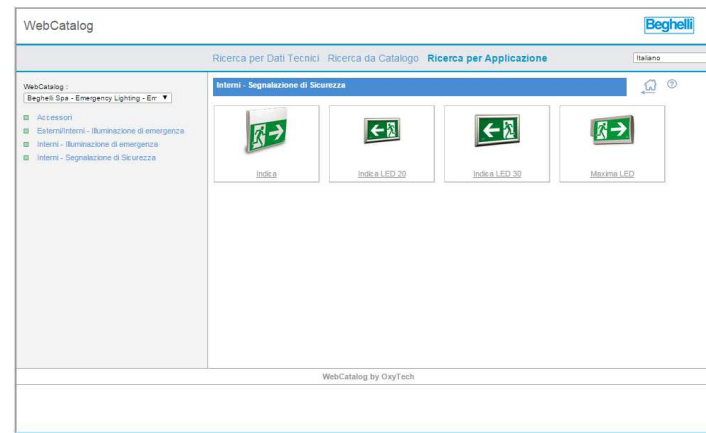
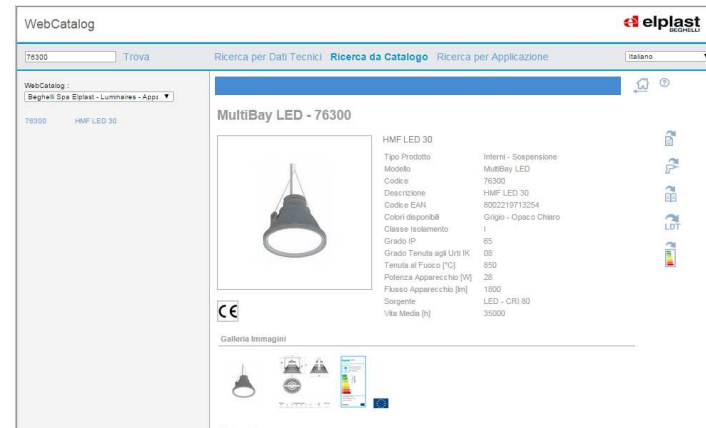
Visualization of the Search by Type mode allows you to surf through the products in the catalog visually (product image).

After opening up, the left-hand menu shows the catalog divided according to product type .

Selection of one of these types with the mouse will open the icons in the right hand window that show the photo and name of the model.

When the product is selected, the list showing product code and description will appear.

Select a line from the list and this will open the product data sheet.



Notes

By typing the product code on the top left and pressing the *Find* key, the code will be automatically highlighted in the product list. Click with the left mouse button on the highlighted code to open the product data sheet.



View modes

Product data sheet

The product data sheet is the ultimate objective of the search. It contains all technical and commercial details needed to understand the characteristics of the product. Various icons will appear to the side of the sheet according to the data available



To access the data sheet

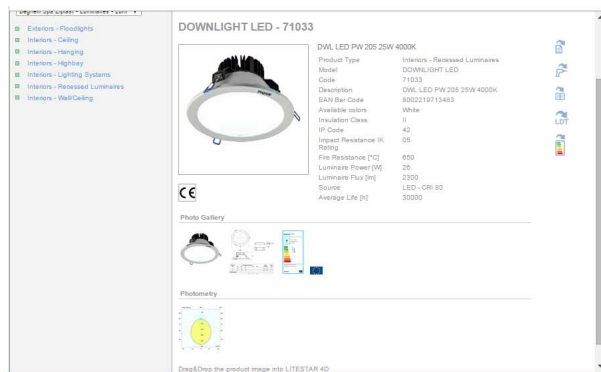
To open the assembly instructions, energy label or conformity declaration

To open relative text documents

To download the photometry

To download other types of file such as drawings or videos

From here you can also perform Drag&Drop functions in the Liswin and Litalc program modules, as described alongside.



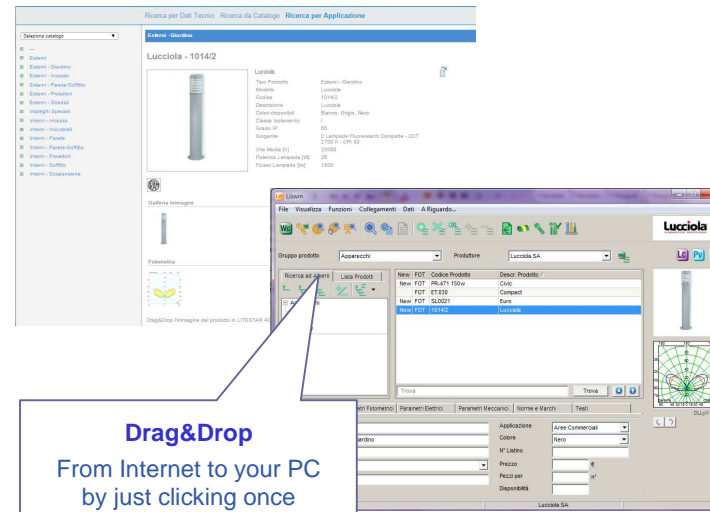
Drag&Drop

When the Liswin or Litalc programs are open, it is possible to transfer all the catalog elements of the selected product from the browser to the program installed on your own computer, simply by dragging the image with the mouse into the Liswin product list or the Litalc design area.

To do this you must keep the left mouse button pressed on the product image in the Webcatalog and drag it into Liswin or Litalc. Upon release of the mouse button:

- ▶ In Liswin, the product will be visualized in the list
- ▶ In Litalc, the product will be inserted directly into the project you are realizing

If you insert the product directly into Litalc, the software will automatically proceed to add it to the Liswin list.



Notes

On the product sheet page, the **Image Gallery** area contains the visualization of all images connected with the product.

Select one of the available photos to change the image visualized in the sheet.

The **Accessories** area instead contains the images of the accessories (if associated with the product).

Select one of the available photos to open the data sheet of the relative accessory.



View modes

Technical data sheet

Clicking on the *Technical Sheet* will open the sheet relating to the product.

The product data sheet shows all the technical and commercial information as supplied by the manufacturer and as it will be presented if the sheet is downloaded in PDF format.

Technical Sheet Setting



Click on the icon to access sheet setting where you can choose:

- ▶ The images to be printed with the sheet
- ▶ The printout language

Click on the Update icon on the right to update all the data in the Technical sheet and click on the relative icon on the top right to print.

Technical Data Sheet

eliplast

General and Commercial Data

| | |
|-----------------|------------------------|
| Product Name | Innova - 40mg |
| Model | MulBay LED |
| Code | 70300 |
| Product | MulBay LED 100 |
| EAN Bar Code | 800219710219 |
| Manufacturer | Bayard-Beaulieu, S. S. |
| Color | Grey - 400 1000 |
| Material | Whitehouse - Sheet |
| Net Weight (kg) | 1.2 |
| Dimensions (mm) | 305x145 |

Characteristics

| | |
|--|--------------------------|
| IP Code | 1 |
| IP Code | 40 |
| Input Resistance in Rating | 25 |
| Dim Resistance (%) | 100 |
| Luminous Flux (lm) | 100 |
| Luminous Efficacy (lm/W) | 80 |
| Color Rendering Index (CRI) | 80 |
| Range Ambient Temperature (°C) Min - Max | -25 - 40 |
| Beam | For complete current LED |
| Beam | LED - 0°x 90° |
| Beam (°) | 3000 |
| Beam (°) | 210 |

Photometric Parameters

| | |
|-------------|----------------------|
| Measurement | 1030 |
| Code | (7) 25, 40, 100, 100 |

Norms & Marks of Conformity

| | |
|----|----|
| CE | CE |
|----|----|

Technical Data Sheet

Print language selection: English

Select images for data sheet:

mulbay_400.jpg mulbay_led_100_dim.jpg 703000.PNG Energy label

Notes

The language in which to visualize the sheet can be selected by clicking on the drop-down menu on the top left of the screen after first clicking on the *Technical Sheet Setting* icon.