



A JUMP INTO THE FUTURE

LITESTAR 4D v.1.04

WebCatalog User's Manual

December 2011

Index

Webcatalog	3
Introduction and Access.....	3
Search Methods	4
Tree search	4
Product List	5
Model.....	5
View modes.....	6
Product data sheet	6
Drag&Drop	6
Technical data sheet.....	7
Documents	7
Download	7

Webcatalog

Introduction and Access

LITESTAR 4D – WebCatalog is an application that allows manufacturers' luminaires and lamps catalogs to be visualized by means of internet connection to the Oxytech site (<http://www.oxytech.it>), or to the site of the individual manufacturers or wholesalers who have implemented this function.

The spirit of the WebCatalog application is to make immediately available the luminaire data, technical and commercial details and photometric files which the manufacturers, partners in the **Litestar Project**, supply to the market.

This means constantly updated catalogs are available in real time.



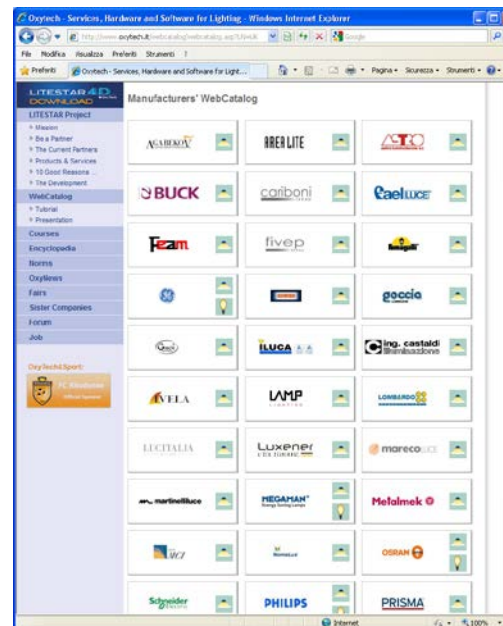
Access to the Webcatalog (present in WebOxy) can be gained from the Litecalc or Liswin modules by means of the *WebCatalog* icon situated:

- On the right of the screen in the library TAB, in Litecalc
- In the icon bar in Liswin
- In the Links menu of both modules

Alternatively it is possible to access directly from WebOxy using a browser (internet surf program).

After typing the web address <http://www.oxytech.it> in the browser address bar and opening the home page, select the *WebCatalog* button in the menu on the left to visualize the manufacturers' catalogs.

Then click on the icon (luminaires or lamps) near the logo of each manufacturer, in the right-hand list, to visualize the catalog of the selected manufacturer in which you can search and select the product to be imported into Liswin or Litecalc, or choose to print the technical sheet, as illustrated in the following chapters.



Access to WebCatalog

Notes

The WebCatalogs present on the sites of the individual manufacturers or wholesalers are solely accessible from the relative sites. It is advisable therefore to ask the manufacturer or wholesaler that interests you if they have activated the WebCatalog service on their home page.

The speed of the internet connection only affects how quickly the data appears on screen and can be downloaded.

Search Methods

Opening the catalog, three keys situated in the bar in the upper part of the screen allow selection of one of the three search modes available, which are:

- ▶ Tree search
- ▶ Product list
- ▶ Model

Tree search

Tree search allows product search by selecting the characteristics step by step, following a pre-established “tree” structure.

In the drop-down menu on the top left, four models are proposed:

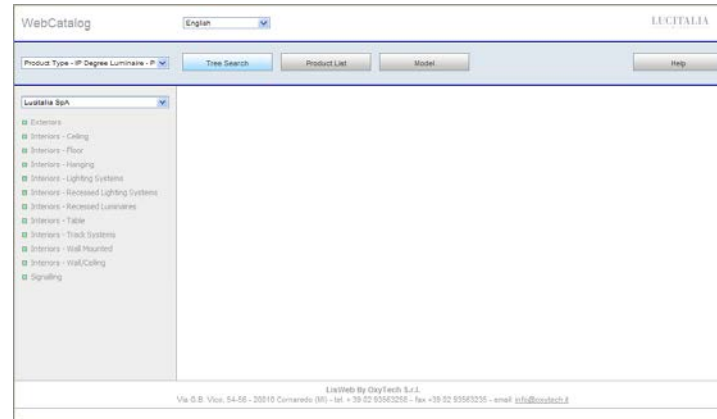
- ▶ Product type - IP degree - power
- ▶ Model - colors - power
- ▶ DIN Class - lamp type - power
- ▶ Colors - Product type - power

On selection of one of the models, the vertical bar on the left of the screen shows the “families” into which the catalog has been divided.

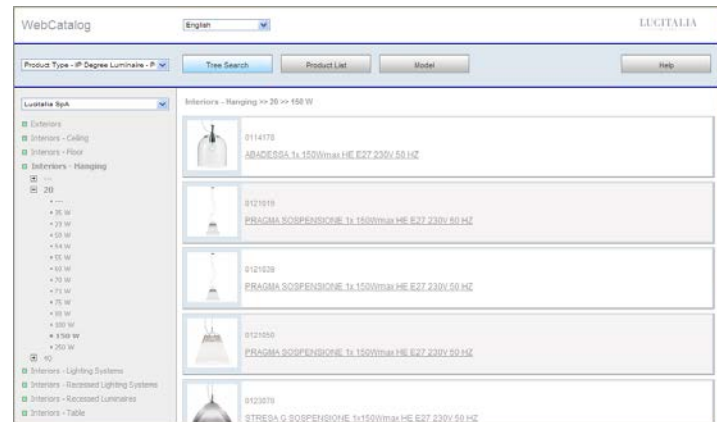
The choice of the item in the list takes place in the order foreseen by the selection: e.g. Type – IP degree - power will present the items in the same order in the tree.

Selection of the third level element opens on the right the list of the elements with the same values (in the example with the same Type – IP degree - power).

Selection of the product on the right, with a mouse click on the description, will open the product data sheet.



WebCatalog on opening



View modes – Tree search

Notes

Notes area for additional information.

Search Methods

Product List

When Product List is selected, the left-hand menu shows a code-ordered list complete with product description.

Selection of the code with the left mouse button directly opens the product data sheet.

Model

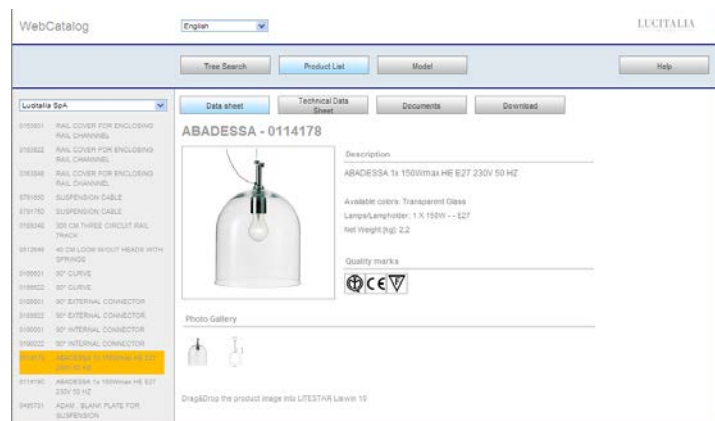
Visualization of the Model mode allows you to surf through the products in the catalog visually (product image).

After opening up, the left-hand menu shows the catalog divided according to product type .

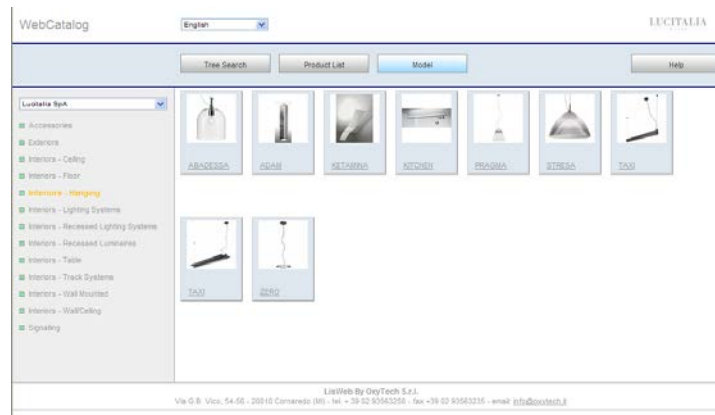
Selection of one of these types with the mouse will open the icons in the right hand window that show the photo and name of the model.

When the product is selected, the list showing product code and description will appear.

Select a line from the list and this will open the product data sheet.



View modes – Product list



View modes – Model

Notes

Pressing the CTRL key plus the F key opens a search bar where you can type in the product code which will then automatically be highlighted in orange in the product list. Click with the left mouse button on the highlighted code to open the product data sheet.

View modes

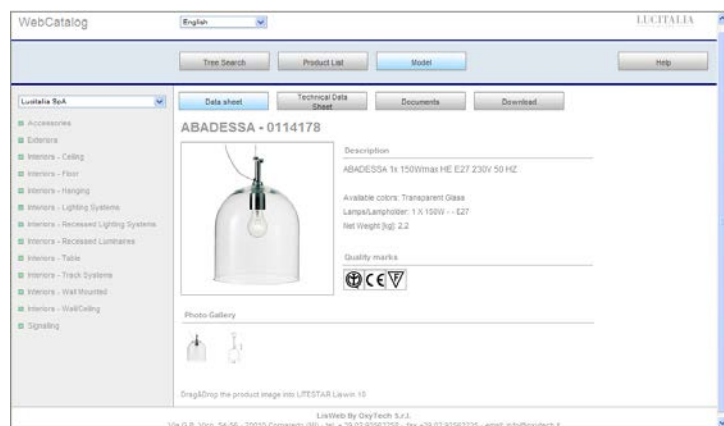
Product data sheet

The product data sheet is the ultimate objective of the search. It contains all technical and commercial details needed to understand the characteristics of the product.

Above the data sheet there are four buttons which open:

- ▶ Product data sheet
- ▶ Technical data sheet
- ▶ Documents
- ▶ Download

The sheet produced represents the default opening of the product, when an article has been selected. From here you can perform the Drag&Drop function into the Liswin and Litalc program modules, as described here beside.



Product sheet

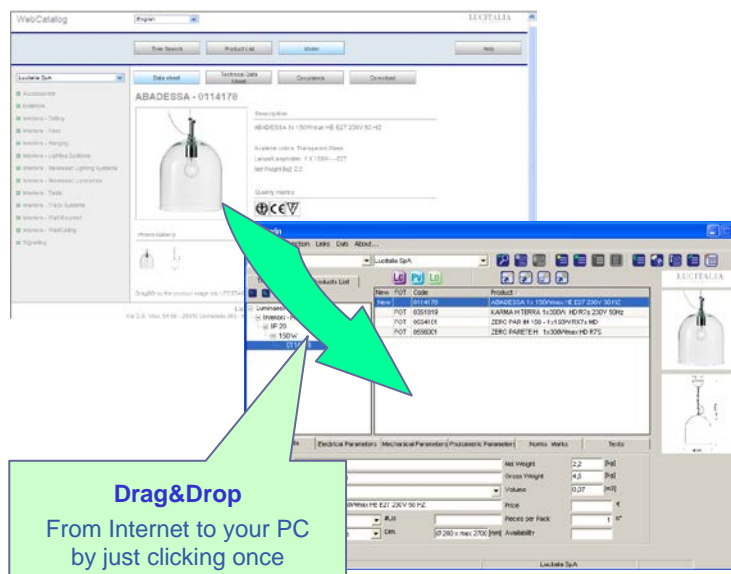
Drag&Drop

When the Liswin or Litalc programs are open, it is possible to transfer all the catalog elements of the selected product from the browser to the program installed on your own computer, simply by dragging the image with the mouse into the Liswin product list or the Litalc design area.

To do this you must keep the left mouse button pressed on the product image in the Webcatalog and drag it into Liswin or Litalc. Upon release of the mouse button:

- ▶ In Liswin, the product will be visualized in the list
- ▶ In Litalc, the product will be inserted directly into the project you are realizing

If you insert the product directly into Litalc, the software will automatically proceed to add it to the Liswin list.



Notes

On the product sheet page, the **Image Gallery** area contains the visualization of all images connected with the product.

Select one of the available photos to change the image visualized in the sheet.

The **Accessories** area instead contains the images of the accessories (if associated with the product).

Select one of the available photos to open the data sheet of the relative accessory.

View modes

Technical data sheet

Clicking on the *Technical Sheet* will open the sheet relating to the product.

The product data sheet shows all the technical and commercial information as supplied by the manufacturer and as it will be presented if the sheet is downloaded in PDF format.

Documents

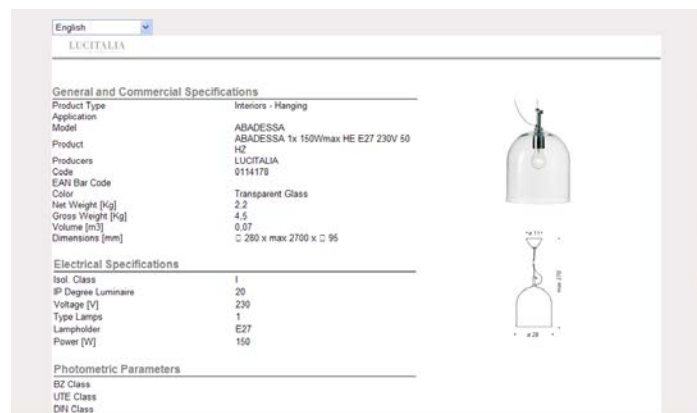
The documents page, accessed by selecting the relative key, allows you to visualize the documents linked to the selected product on the web.

Download

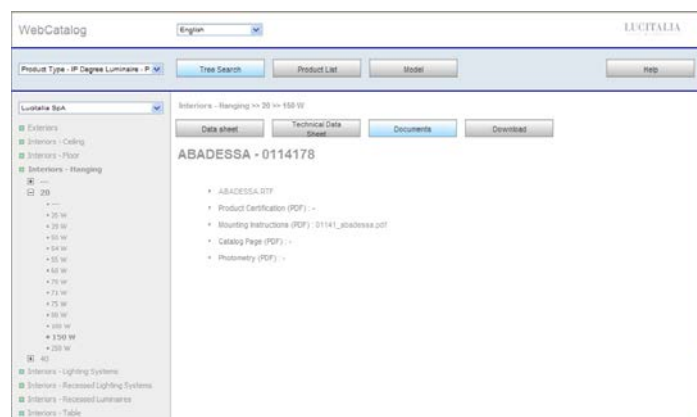
The download page allows all the information that the manufacturer has decided to make available to be downloaded onto your own computer.

This may include:

- ▶ product data sheet
- ▶ product photographs
- ▶ dimensional technical diagrams
- ▶ application photographs
- ▶ assembly leaflet
- ▶ certifications
- ▶ et cetera



Product data sheet



Download

Notes

The language in which to visualize the sheet can be selected by clicking on the drop-down menu on the top left of the screen.