

Operative Electronic Catalog Module

LITESTAR 4D Liswin v.1

For Windows XP-NT (V.4 Service Pack 3)-Vista-Windows 7

Software Type

Interactive (*) operative electronic catalog program module including the following functions:

- Both parametric and tree product search
- Data sheet management in several formats and languages allowing to print or save as .PDF
- Accessory documents management (instruction leaflets, certifications, photometries etc.)
- Automatic selective data updating via Internet
- Data acquisition from Internet WebCatalog by Drag&Drop
- Interface with Litecalc and Photoview modules
- Price list management, currency included
- Specs, estimates and quotations management

The catalog manages both luminaire and lamp data.

(*) **N.B.** – the term Interactive Electronic Catalog defines the software instrument that integrates the above mentioned functions.

Data Archives

The catalog data are saved into an Access database (MDB format) in four different ways:

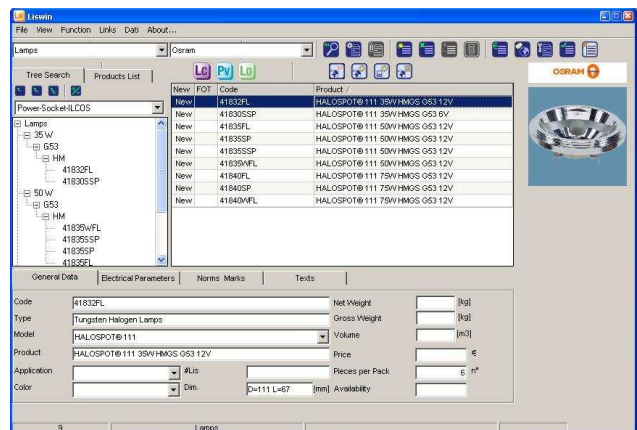
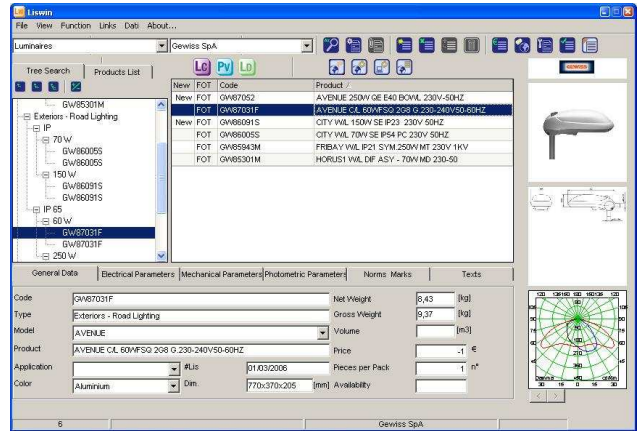
- by using LITESTAR 4D Lisdat program module that allows to input data manually
- by means of Parametric Data Update via Internet function available in Liswin
- by selecting Data Plug-in Import function available in Liswin
- by Drag&Drop from the product WebCatalogs available on the Internet

Operating Environment and Copyright

- Operating System MS Windows XP-NT(V.4 Service Pack 3)-Vista-Windows 7
- Microsoft and Windows are registered trademarks of Microsoft Co.
- Acrobat is a registered trademark of Adobe Inc.
- AutoCAD is a registered trade mark of AutoDesk Inc

Hardware Configuration

- PC Pentium, RAM 1 Gb, Hard Disk with 50 Mb for program and 500 Mb for data, VGA 1024x768 with GL2 (updated Open Graphics Libraries 2.0 and 2.1), Mouse
- N.B.: in case Intel graphic cards were being used, instability cases could occur



Operative Electronic Catalog Module

LITESTAR 4D Liswin v.1

For Windows XP-NT (V.4 Service Pack 3)-Vista-Windows 7

▶ Main Functions

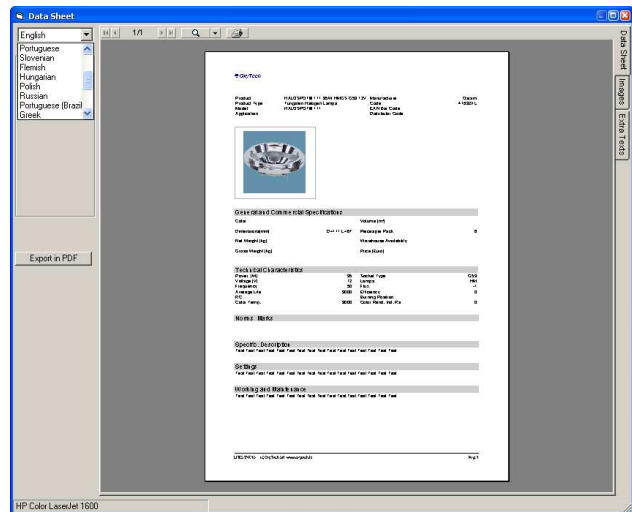
- Electronic Catalog developed on MS Access base working as a stand-alone application or integrated to LITESTAR 4D Litecalc and Photoview program modules
- Both single catalog and multiarchive data organization according to requirements
- Parametric product search on all available fields of:
 - Luminaires – product search by general data (type, model, price, weight ...), electrical data (lamp type, power, voltage ...), mechanical data (IK, surface exposed to wind ...) photometric data (international classifications, beam opening, efficiency ...), norms and marks.
 - Lamps – product search by general data (type, model, price, weight ...), electrical data (lamp type, power, voltage ...), norms and marks.

Search can be defined both on the entire group of data/catalogs available and on subgroups as, for example, for subsequent searches.

Search can be made automatically via Internet which allows download from a remote file of those products that meet the search parameters set, or locally from local units (HD or DVD).

The import function from Internet is also useful for automatically checking the availability of updated remote catalog data.

- Three-level tree search with automatic product view.
- Folder view of individual product data with images and drawings, and descriptive texts or specifications
- View and print of data sheets with the possibility of:
 - selecting one out of the 4 available formats
 - modifying the format, number of images and type of data to be printed
 - selecting lamp or lamps to use (particularly useful function for those luminaires which are able to function with different sources)
 - adding accessories by means of selection
 - adding of comment that can be saved for later use
 - automatic translation in various languages.
- Multiple price list management for the same catalog, expressed in different currencies
- Accessory documents managements, like:
 - Instruction leaflets, Safety certificates, Catalog extracts etc. in DOC, RTF, XLS, TXT, PDF formats
 - Drawings in DXF and DWG format
 - Films in WAV format



- Projects and job orders management as well as product lists creation by:
 - Importing one or several projects from LITESTAR 4D Litecalc with the possibility of having filters for the code creation
 - Importing the product lists created with LITESTAR 4D Liswin catalog module
 - Inputting manually new products on the list which offers the possibility of adding pictures and descriptive text.
- Products specs management with complete and reduced list including:
 - Management of currency, discounts pictures and description
 - Product codes encryption
 - Automatic translation into the available languages
- Quotation management with automatic translation into the available languages
- Product specs, metric processing and quotations conversion to the following formats:
 - PDF
 - CSV that can be used, for instance, in accounting software.