

# WebCatalog



## Liswin Catalog Management System on Websites

LITESTAR 4D WebCatalog v.1

For SQL Server Web Systems with ASP files management

### ► Software Type

Internet Viewing program module of Liswin operative electronic catalog.

WebCatalog includes the following functions:

- Tree Search of products configured by the user
- Management of all product data sheets in various languages
- Drag&Drop function within Liswin catalog: the product is selected in Internet and dragged into Liswin for subsequent operations.

WebCatalog is available in the following configurations:

- standard
- customized according to the requests of the customer, manufacturer or retailer.

Both, WebCatalog and Liswin, do represent a series of highly flexible instruments, simple to use and extremely fast in the various operations, able to dramatically reduce data management times at all levels: WebCatalog and Liswin are unique of its kind !

A single database to manage different operations !

### ► Database

The database used for Internet viewing is the same as that of Liswin, called Oxydata.mdb (MDB Access file).

The catalog data are saved in the database by means of:

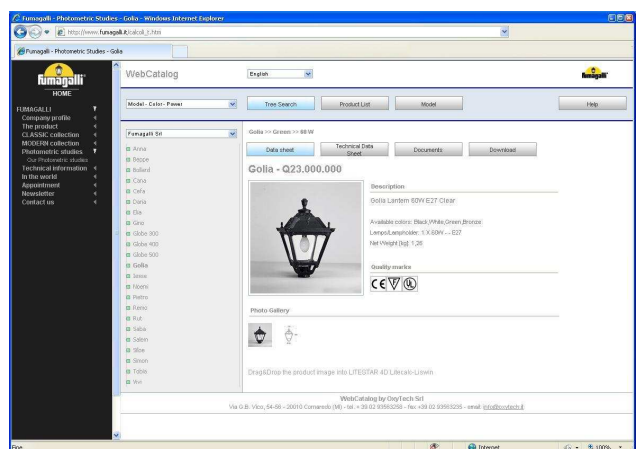
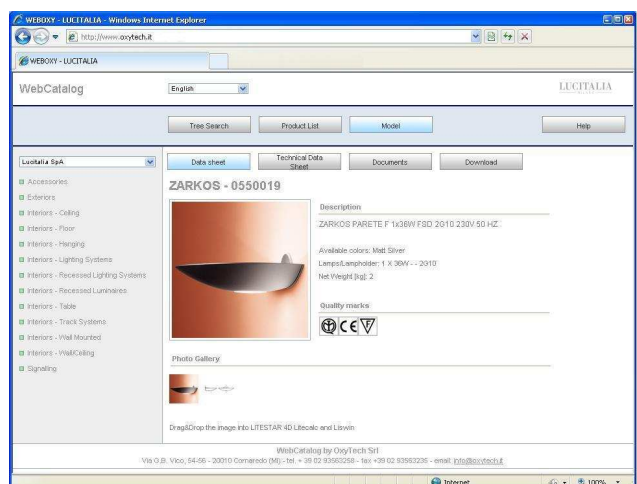
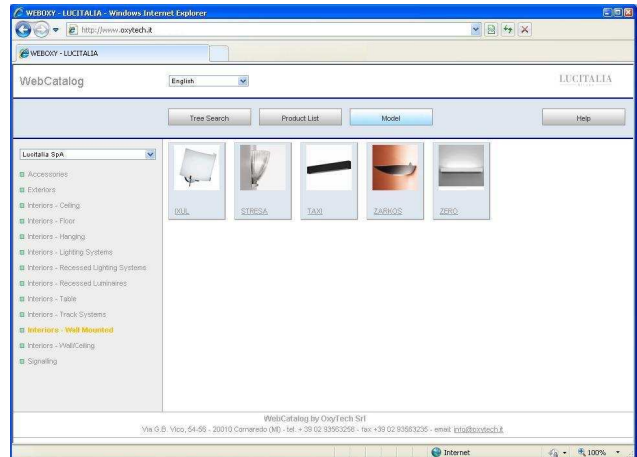
- LITESTAR Lisdat module (manual input)
- selective automatic import via Internet
- selective manual import

### ► Operating Environment and Copyright

- Operating System MS Windows XP-NT(V.4 Service Pack 3)-Vista-Windows 7
- Microsoft and Windows are registered trademarks of Microsoft Co.
- Acrobat is a registered trademark of Adobe Inc.
- AutoCAD is a registered trade mark of AutoDesk Inc.

### ► Hardware Configuration

- SQL Server Web Systems with ASP files management



# WebCatalog



## Liswin Catalog Management System on Websites

LITESTAR 4D WebCatalog v.1

For SQL Server Web Systems with ASP files management

---

### ▶ Main Functions

- Tree search with automatic product view.
- Technical data sheet view of individual product data with images, drawings, and descriptive texts or specifications
- Drag&Drop of the product image straight into the Liswin program for subsequent operations such as the making of metric processing or quotations.
- Data sheet viewing and printing
- Viewing of accessory documentation such as certifications and files for download