

Lisman

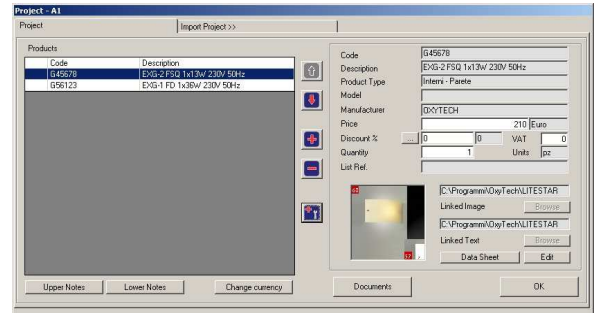
Specifications and Estimate Program Module Management

LITESTAR Lisman v. 10 - Windows 2000-XP-NT (V.4 Service Pack 3)-Vista

→ Software Type

Program module for managing technical specifications and estimates of the products with functions of:

- Import of product list from Litecalc
- Import of product list from Liswin
- Manual product insertion
- Offers and metric calculation management with save in PDF
- Price list management in different currencies
- Export of product lists in RTF, XLS and CSV formats.

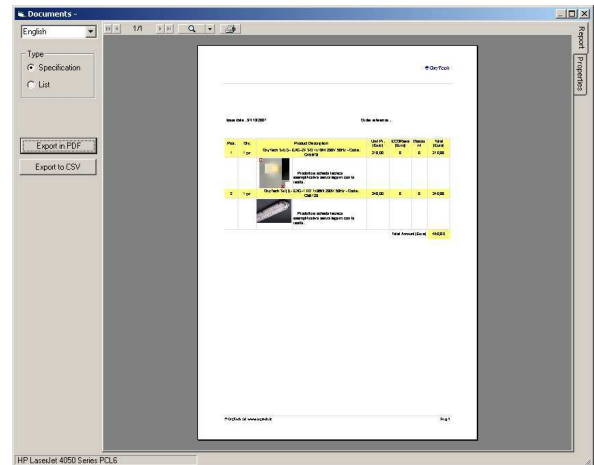


→ Operative environment and Copyright

- PC environment MS Windows 2000-XP-NT (V. 4 Service Pack 3)-Vista
- Microsoft and Windows are registered trademarks of Microsoft Co.
- Acrobat is a registered trademark of Adobe Inc.
- AutoCAD is a registered trade mark of Autodesk Inc.

→ Hardware Configuration

- Computer Pentium IV or greater
- RAM 1 Gb
- Hard Disk with 50 Mb for programs and 500 Mb for data
- Graphic card 800x600 with GL2 (Open Graphics Libraries 2)
- Mouse



Main Functions

- Estimate management with opportunity to create product lists by means of:
 - Import of one or more projects from LITESTAR Litecalc with possible filter for code break up or composition
 - Import of product lists created with LITESTAR Liswin catalog module
 - Manual insertion into list of new products with possibility of adding images and descriptive text.
- Advanced management:
 - Of discounts set by user at different levels
 - Of currency with possibility of introducing new ones.
- Product specifications management of complete or reduced list with possibility of:
 - Eliminating discounts, images, descriptions
 - Product code encryption
 - Automatic translation in available languages.
- Estimate management with automatic translation in available languages.
- Address book management with search functions also with partial insertion of parameters.
- Conversion of product specs and estimates in the formats:
 - PDF
 - CSV usable, for example, in accounting programs.

